



Fe26 FABRICATION PVT LTD

CUSTOMER
DELIGHT THRU

QUALITY, COST & DELIVERY

OUR MOTO



CUSTOMER DELIGHT THRU QUALITY, COST & DELIVERY

OUR TEAM

- **Managing Director**: Mr U K Verma, B Tech (Industrial Engineering) with MBA in Marketing. 40+ Years of Industrial experience retired as CEO in Sept 2018 - 3 plants – Rs.150 CR turnover, one plant was for heavy fabrication manufacturing Tractor, Railway & Backhoe parts – Rs.70 Cr annual turnover.
- **Director Materials** : Mr Amit Aggarwal, 20+ Years of Steel Trading in Faridabad.
- **Director Finance**: Mr Varun Goel, B.Com from Delhi University and 11 years' experience in Business Financial Management.
- **Plant Head** : Mr Gajender Sharma, B Tech Mech., MBA in Operations and ASME (Section 9) welding certification & TPM Certification, with 14+ years of heavy Fabrication manufacturing of Tractor, Railway and Backhoe parts.
- **Quality, QMS & Design Head** : Mr Shashi M Mehta, B Tech, with 33+ years of experience in Quality, QMS, Engineering product process and Designing on CAD.

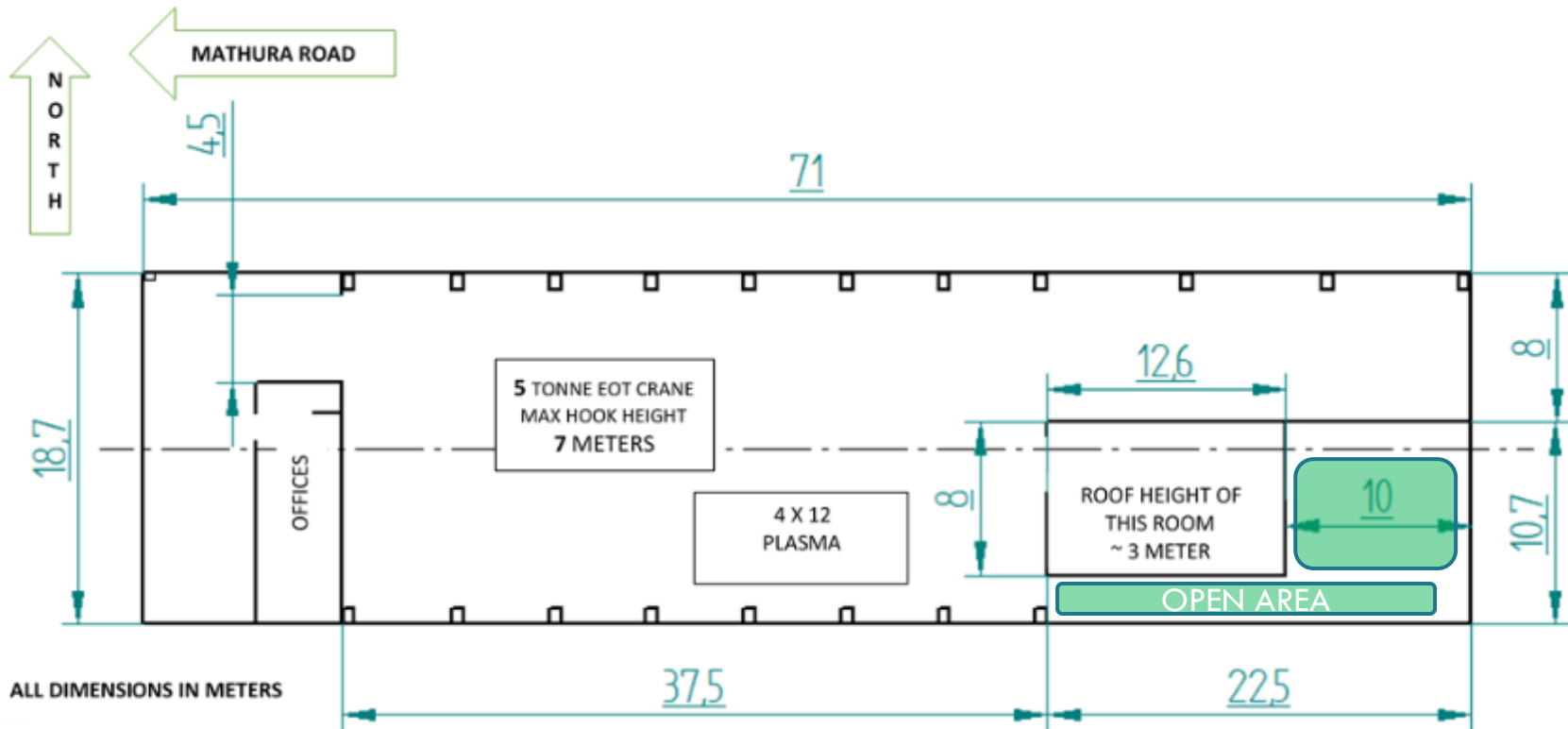
FACTORY AREA

35000 sq. ft. total area, 18500 sq. ft. covered area in newly built up shed 25 feet clear working height, supported with 5 Ton EOT, just ½ kilometre, from Mathura road.

EXPANSION – March 2020



LAYOUT COVERED AREA



MAJOR MANUFACTURING FACILITIES

- Shed having a clear floor 37 meters long, 18.5 meter wide, 7 meter clear hook height
- CNC Plasma - Max Pro 200 Hypertherm, Pro Arc make with 4000 x 8000 mm bed. Cutting capacity 32 mm plasma, 150 mm oxyfuel
- 5 ton EOT, 3 ton EOT under Installation
- Panasonic 400 amp 12 MIG + 1 TIG Welding sets
- Air compressor 15 CFM.
- Sheet Rolling Machine 2500 mm wide, 20 mm thickness capacity
- Portable drilling (magnetic base) up to 32 mm dia. 4 nos.
- 62.5 KVA Genset

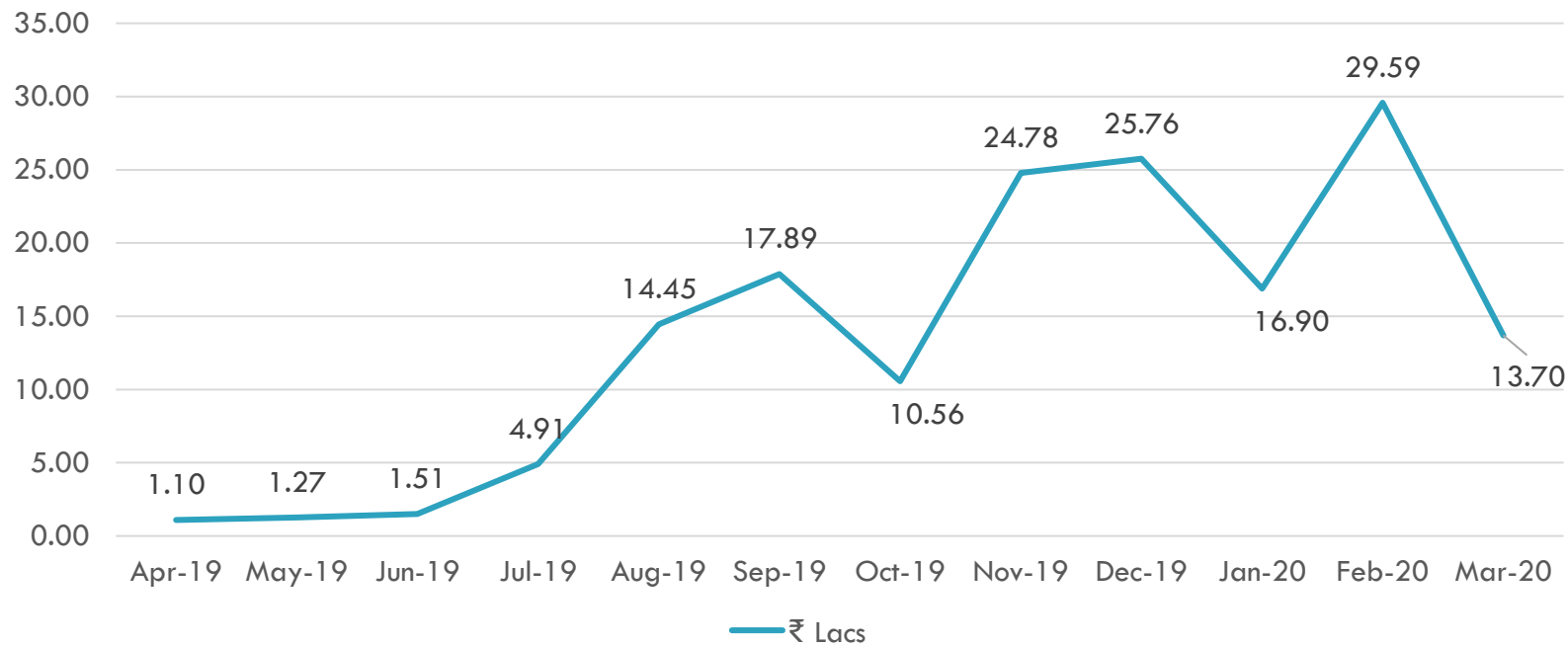
MANUFACTURING STRENGTH

- Solid Edge CAD designing
- Laser Leveller & general purpose measuring instruments
- BVQI Certified Welders
- 3rd Party Product Certification as per customer's requirement

CUSTOMERS

- F L SMIDTH
- TRIVENI ENGINEERING
- COPERION
- DEE DEVELOPMENT
- PRANAV VIKAS

NET SALES



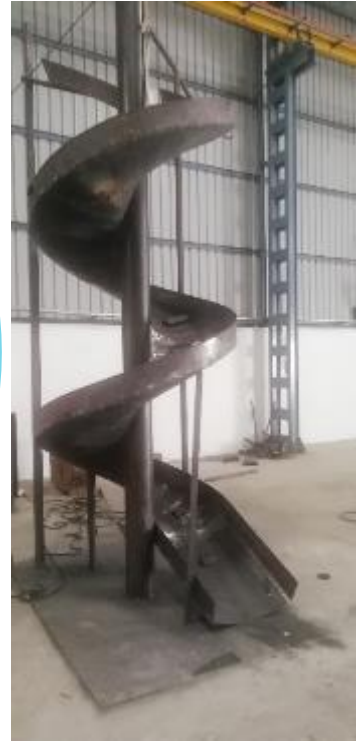
PRO ARC – Max Pro 200 HYPERTHERM



Rolling Machine – 2500 mm Wide, 20 mm Thick



SPIRAL CHUTE



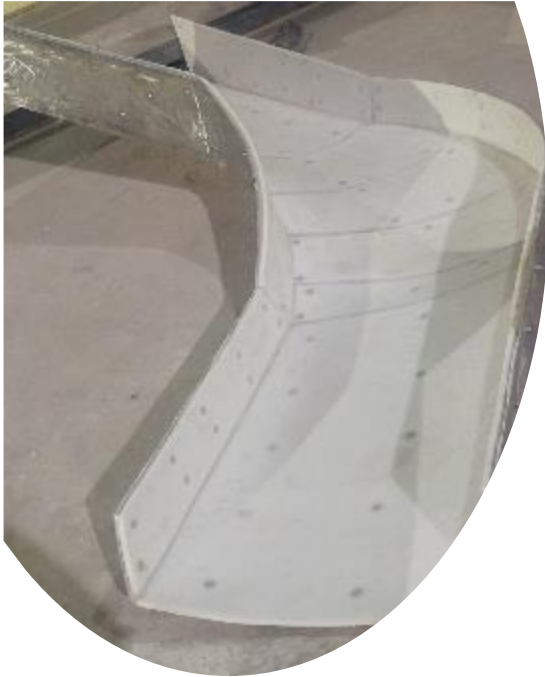
FBARICATED AIR DUCTS



FBARICATED AIR DUCTS



Stainless Steel LINED CHUTE



LARGE FABRICATIONS



Rolled Drum \varnothing 3000 mm



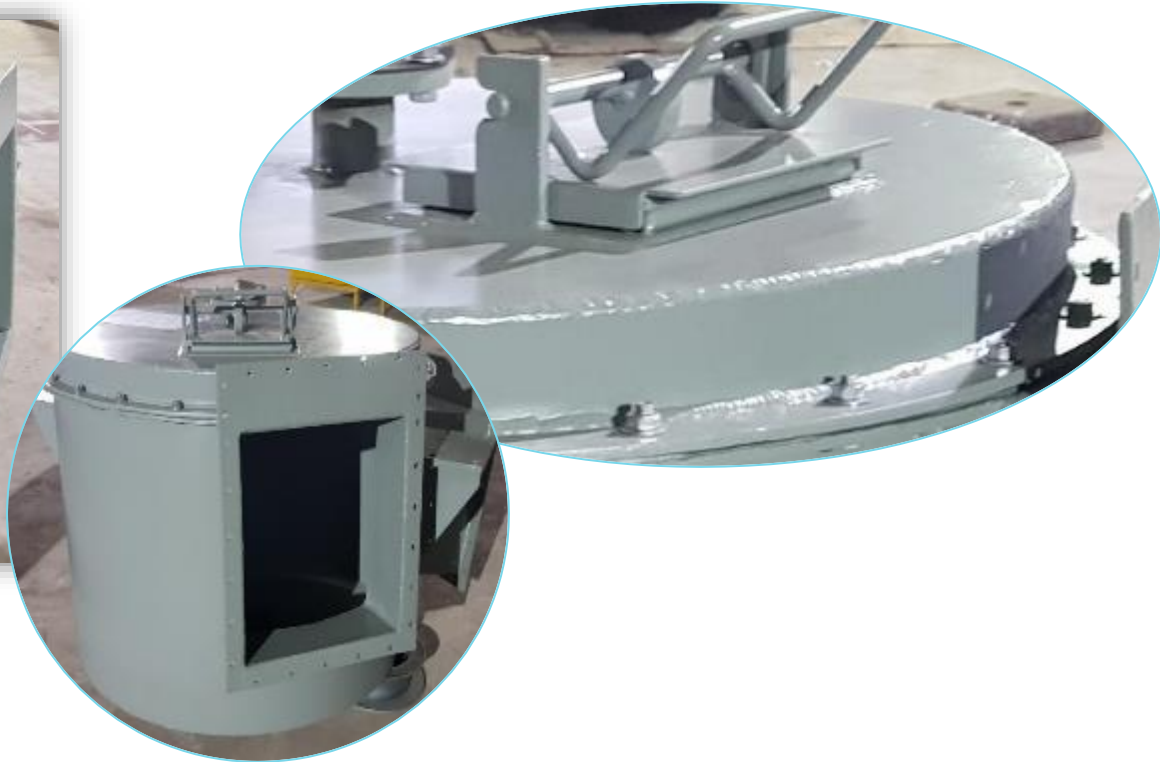
Fabricated Structures



Fabricated Structures



Fabricated Functional Units



Stainless Steel Structures



Thank you!

Visit us – www.fe26fabrication.com

For further information, please contact

Mr. Gajender Sharma

Plant Head

8708363100; gsharma@fe26fabrication.com

Plot No 2, Gali No 2, Sikri Piyala Road

Sikri, Faridabad, 121004

Google Plus Code: **77CW+94 Sikri, Haryana**