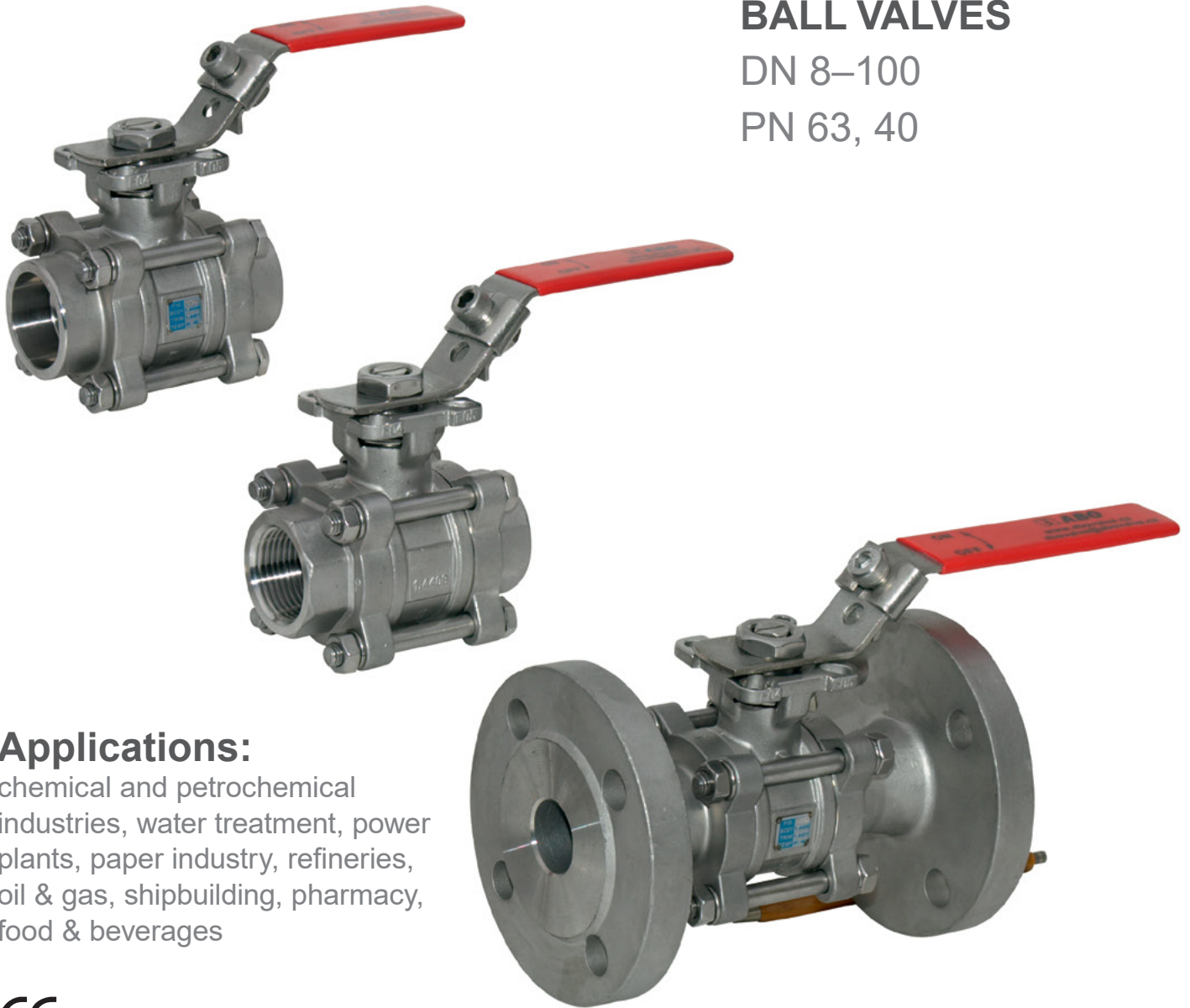




ABO



BALL VALVES

DN 8–100

PN 63, 40

Applications:

chemical and petrochemical industries, water treatment, power plants, paper industry, refineries, oil & gas, shipbuilding, pharmacy, food & beverages

CE

BALL VALVES

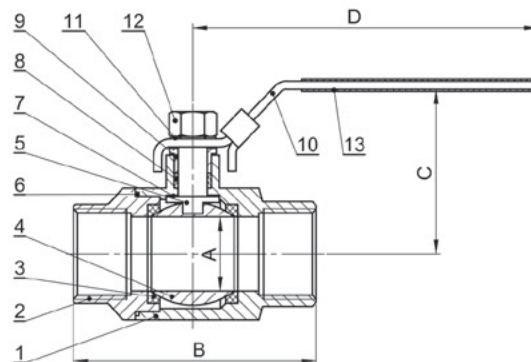
WWW.ABOVALVE.COM

ART. 940 / ART. 941

ART. 940

Stainless steel ball valve:

- 2 pieces
- Full bore
- F.F. thread (BSPP / BSPT)
- DN 8–25 PN 63, DN 32–50 PN 40
- Thread end:
ANSI B 1.20.1 (NPT)
ISO 7/1 (Rc/Rp)
ISO 228/1 (G)



OPERATING TORQUES

DN	8	10	15	20	25	32	40	50
Nm	1,76	1,76	2,65	8,04	9,51	13,24	17,16	21,27

Note: The torque figures were measured under 0 pressure at room temperature (without safety factor).

DN	A	B ± 2	C	D
8	10	50	41,4	80
10	12,5	50	41,4	80
15	15	60	45	80
20	20	70	54,7	100
25	24,5	80	65,3	125
32	32	93	70,9	125
40	38	103	84	160
50	50	123	93,3	160

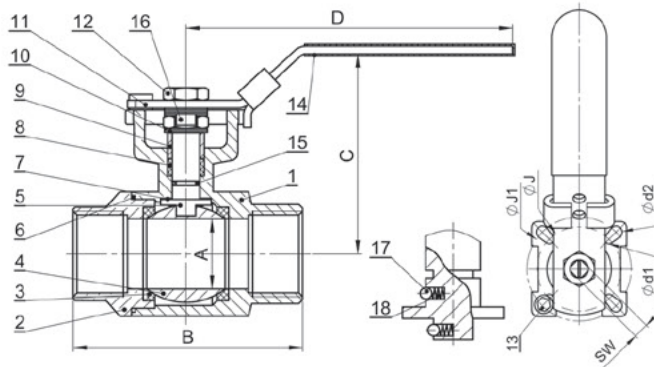
Dimensions in mm. Permissible deviations ± 2 mm.

ITEM	PART NAME	MATERIAL	QUANTITY
		Art. 940	
1	Body	EN10213 1.4408	1
2	End caps	EN10213 1.4408	1
3	Seat	PTFE + 15% G.F.	2
4	Ball	CF8M/316	1
5	Stem	SUS 316	1
6	Gasket	PTFE	1
7	Gasket	PTFE	1
8	Seal	PTFE	1
9	Packing gland	SUS 304	1
10	Handle	SUS 304	1
11	Lever spring washer	SUS 304	1
12	Lever nut	SUS 304	1
13	Plastic coating	PVC	1

ART. 941

Stainless steel ball valve:

- 2 pieces with ISO flanged connections
- Full bore
- F.F. thread (BSPP / BSPT)
- PN 63
- Thread end:
ANSI B 1.20.1 (NPT)
ISO 7/1 (Rc/Rp)
ISO 228/1 (G)



OPERATING TORQUES

DN	15	20	25	32	40	50
Nm	4,12	4,61	9,02	9,61	12,55	21,27

Note: The torque figures were measured under 0 pressure at room temperature (without safety factor).

DN	A	B	C	D	H	L	J	J1	d1	d2	SW
8	11,1	57	72,7	110	42,3	8	42	50	6	7	9
10	11,1	57	72,7	110	42,3	8	42	50	6	7	9
15	15	57	70,2	110	42,3	8	42	50	6	7	9
20	20	71	72,7	110	44,8	8	42	50	6	7	9
25	24,5	83	83,5	135	54	10	42	50	6	7	11
32	32	91	100	165	59,2	10	50	70	7	9	11
40	38	104	100,8	165	71,3	10	50	70	7	9	11
50	50	123	118	165	82,9	14,8	50	70	7	9	14

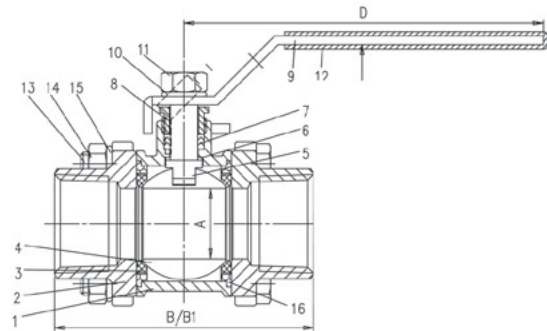
Dimensions in mm. Permissible deviations ± 2 mm.

ITEM	PART NAME	MATERIAL	QUANTITY
		Art. 941	
1	Body	EN10213 1.4408	1
2	End caps	EN10213 1.4408	1
3	Seats	PTFE + 15% G.F.	2
4	Ball	CF8M/316	1
5	Stem	SUS 316	1
6	Gasket	PTFE	1
7	Gasket	PTFE + 15% G.F.	1
8	Seal	PTFE	1
9	Gland ring	SUS 304	2
10	Belleville spring washer	SUS 301	2
11	Handle	SUS 304	1
12	Lever nut	SUS 304	2
13	Stop screw	SUS 304	1
14	Plastic coating	PVC	1
15	O-ring	VITON	1–2
16	Locking tab	SUS 304	1
17	Static device	SUS 316	2
18	Spring	SUS 316	2

ART. 942 / ART. 943

ART. 942

- Stainless steel ball valve:
- 3 pieces
 - Full bore
 - F.F. thread (BSPP / BSPT)
 - DN 8–25 PN 63, DN 32–50 PN 20
 - Thread end:
ANSI B 1.20.1 (NPT)
ISO 7/1 (Rc/Rp)
ISO 228/1 (G)



OPERATING TORQUES

DN	8	10	15	20	25	32	40	50
Nm	1,76	1,76	3,92	5,39	7,65	14,22	19,41	22,06

Note: The torque figures were measured under 0 pressure at room temperature (without safety factor).

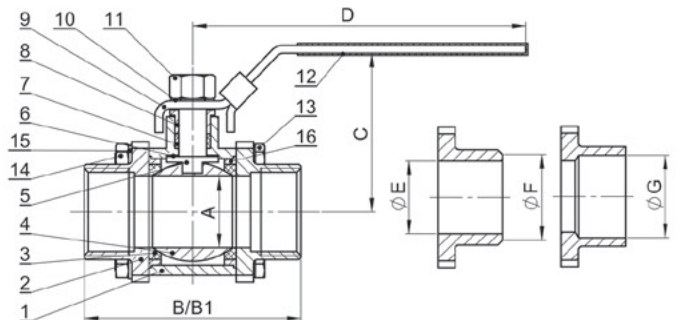
DN	A	B ± 2	C	D	E	F	G	B1 ± 2
8	10	50	41,4	80	10	13	14	70
10	12,5	60	41,4	80	12,5	13	18	70
15	15	75	45	80	16	17	22	75
20	20	80	54,7	100	20	22	27,5	90
25	24,5	90	65,3	125	24,5	28	34,5	100
32	32	110	70,9	125	32	37	43	110
40	38	120	84	160	38	43	49	125
50	50	140	93,3	160	50	54	61,5	150

Dimensions in mm. Permissible deviations ± 2 mm.

ITEM	PART NAME	MATERIAL	QUANTITY
		Art. 942	
1	Body	EN10213 1.4408	1
2	End caps	EN10213 1.4408	2
3	Seat	PTFE + 15% G.F.	2
4	Ball	CF8M/316	1
5	Stem	SUS 316	1
6	Gasket	PTFE	1
7	Seal	PTFE	1
8	Packing gland	SUS 304	1
9	Handle	SUS 304	1
10	Lever spring washer	SUS 304	1
11	Lever nut	SUS 304	1
12	Plastic coating	VINYL	1
13	Bolts	SUS 304	4
14	Bolts nut	SUS 304	4
15	Spring washer	SUS 304	4
16	Body seal	PTFE + 15% G.F.	2

ART. 943

- Stainless steel ball valve:
- 3 pieces
 - Full bore
 - Welding pipe connection
 - DN 8–25 PN 63, DN 32–50 PN 40
 - Welding end:
EN 12627



OPERATING TORQUES

DN	8	10	15	20	25	32	40	50
Nm	1,76	1,76	3,92	5,39	7,65	14,22	19,41	22,06

Note: The torque figures were measured under 0 pressure at room temperature (without safety factor).

DN	A	B ± 2	C	D	E	F	G	B1 ± 2
8	10	50	41,4	80	10	13	14	70
10	12,5	70	41,4	80	12,5	13	18	70
15	15	75	45	80	16	17	22	75
20	20	90	54,7	100	20	22	27,5	90
25	24,5	100	65,3	125	24,5	28	34,5	100
32	32	110	70,9	125	32	37	43	110
40	38	125	84	160	38	43	49	125
50	50	150	93,3	160	50	54	61,5	150

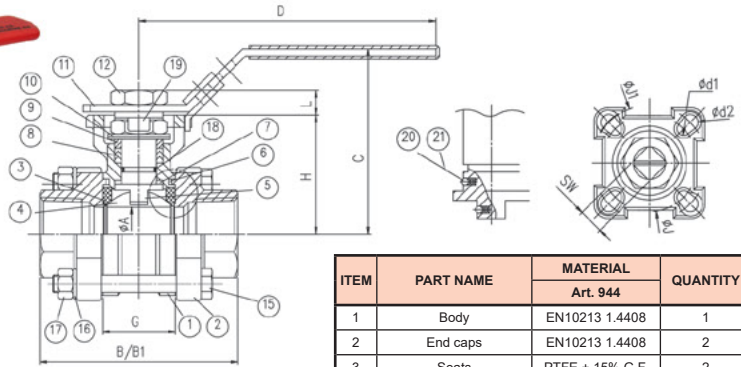
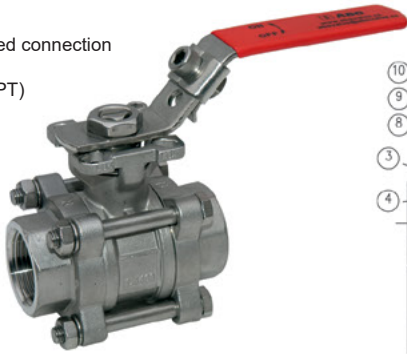
Dimensions in mm. Permissible deviations ± 2 mm.

ITEM	PART NAME	MATERIAL	QUANTITY
		Art. 943	
1	Body	EN10213 1.4408	1
2	End caps	EN10213 1.4408	2
3	Seat	PTFE + 15% G.F.	2
4	Ball	CF8M/316	1
5	Stem	SUS 316	1
6	Gasket	PTFE	1
7	Seal	PTFE	1
8	Packing gland	SUS 304	1
9	Handle	SUS 304	1
10	Lever spring washer	SUS 304	1
11	Lever nut	SUS 304	1
12	Plastic coating	VINYL	1
13	Bolts	SUS 304	4
14	Bolts nut	SUS 304	4
15	Spring washer	SUS 304	4
16	Body seal	PTFE + 15% G.F.	2

ART. 944 / ART. 945

ART. 944

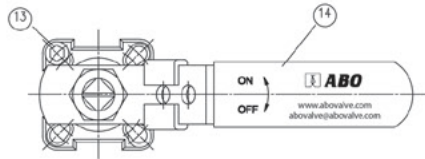
- Stainless steel ball valve:
- 3 pieces with ISO flanged connection
 - Full bore
 - F.F. thread (BSPP / BSPT)
 - PN 63
 - Thread end:
ANSI B 1.20.1 (NPT)
ISO 7/1 (Rc/Rp)
ISO 228/1



OPERATING TORQUES

DN	15	20	25	32	40	50
Nm	3,73	5,10	6,57	9,61	16,47	32,16

Note: The torque figures were measured under 0 pressure at room temperature (without safety factor).



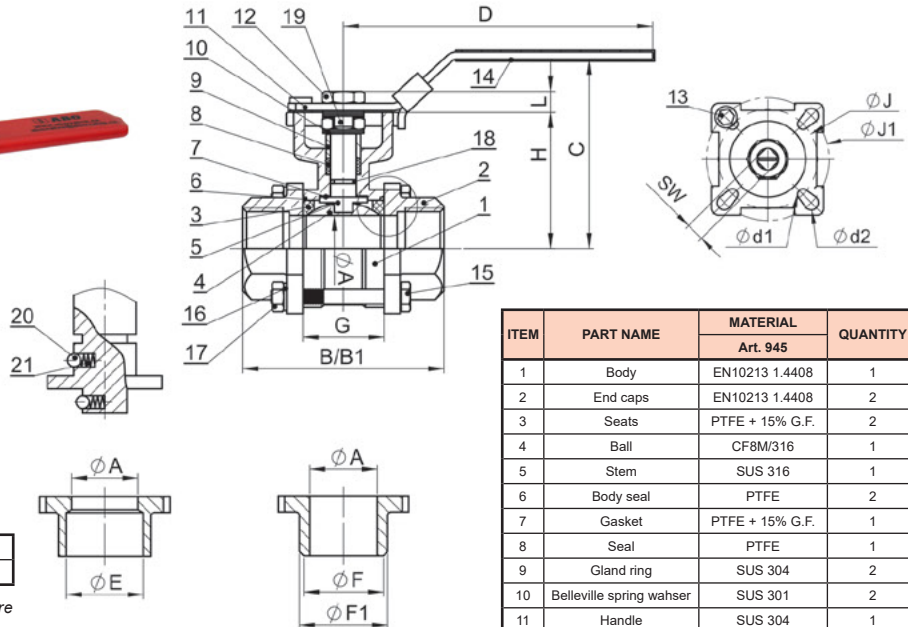
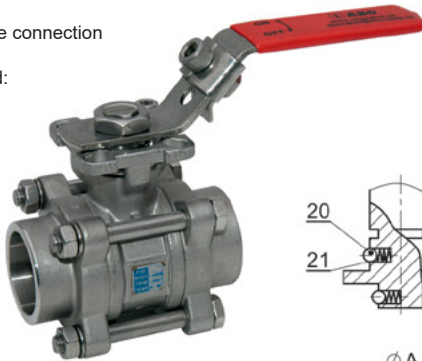
ITEM	PART NAME	MATERIAL	QUANTITY
		Art. 944	
1	Body	EN10213 1.4408	1
2	End caps	EN10213 1.4408	2
3	Seats	PTFE + 15% G.F.	2
4	Ball	CF8M/316	1
5	Stem	SUS 316	1
6	Body seal	PTFE	2
7	Gasket	PTFE + 15% G.F.	1
8	Seal	PTFE	1
9	Gland ring	SUS 304	2
10	Belleville spring washer	SUS 301	2
11	Handle	SUS 304	1
12	Lever nut	SUS 304	1
13	Stop screw	SUS 304	1
14	Plastic coating	PVC	1
15	Bolts	SUS 304	4
16	Spring washer	SUS 304	4
17	Bolts nut	SUS 304	4
18	O-ring	VITON	1-2
19	Locking tab	SUS 304	1
20	Static device	SUS 316	2
21	Spring	SUS 316	2

DN	A	B	B1	C	D	E	F	F1	G	J	J1	SW	d1	d2	H	L
8	11,1	75	75	70,9	110	14,2	13	17,2	25,2	36	42	9	6	6	42,3	8
10	11,1	75	75	70,9	110	17,7	13	17,2	25,2	36	42	9	6	6	42,3	8
15	16	75	75	70,9	110	21,9	17	22,4	25,2	36	42	9	6	6	42,3	8
20	20	80	90	73,4	110	27,2	22	28,2	27,7	36	42	9	6	6	44,8	8
25	24,5	90	100	84,1	135	34	28	33,7	33	42	50	11	6	7	54	10
32	32	110	110	89,3	135	42,7	37	44	41,2	42	50	11	6	7	59,2	10
40	38	120	125	109,5	165	48,8	43	50,8	49,3	50	70	14	7	9	73,5	14,8
50	50	140	150	118,9	165	61,3	54	62,6	63,6	50	70	14	7	9	82,9	14,8

Dimensions in mm. Permissible deviations ± 2 mm.

ART. 945

- Stainless steel ball valve:
- 3 pieces with ISO flanged connection
 - Full bore
 - Welding pipe connection
 - PN 63
 - Welding end:
EN 12627



OPERATING TORQUES

DN	15	20	25	32	40	50
Nm	3,73	5,10	6,57	9,61	16,47	32,16

Note: The torque figures were measured under 0 pressure at room temperature (without safety factor).

ITEM	PART NAME	MATERIAL	QUANTITY
		Art. 945	
1	Body	EN10213 1.4408	1
2	End caps	EN10213 1.4408	2
3	Seats	PTFE + 15% G.F.	2
4	Ball	CF8M/316	1
5	Stem	SUS 316	1
6	Body seal	PTFE	2
7	Gasket	PTFE + 15% G.F.	1
8	Seal	PTFE	1
9	Gland ring	SUS 304	2
10	Belleville spring washer	SUS 301	2
11	Handle	SUS 304	1
12	Lever nut	SUS 304	1
13	Stop screw	SUS 304	1
14	Plastic coating	PVC	1
15	Bolts	SUS 304	4
16	Spring washer	SUS 304	4
17	Bolts nut	SUS 304	4
18	O-ring	VITON	1-2
19	Locking tab	SUS 304	1
20	Static device	SUS 316	2
21	Spring	SUS 316	2

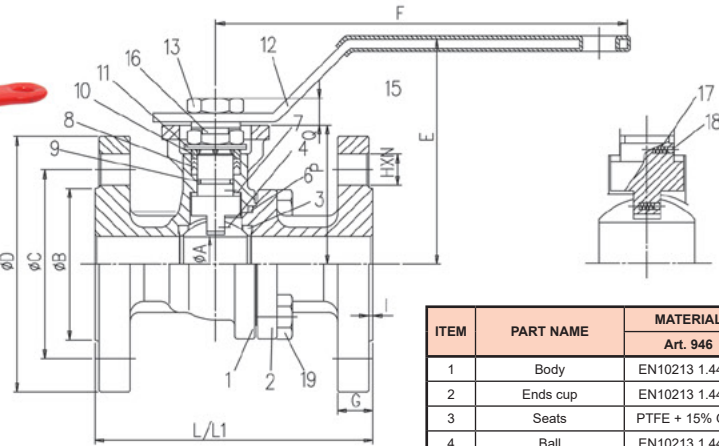
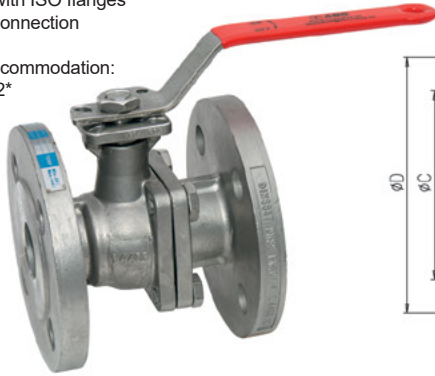
DN	A	B	B1	C	D	E	F	F1	G	J	J1	SW	d1	d2	H	L
8	11,1	75	75	70,9	110	14,2	13	17,2	25,2	36	42	9	6	6	42	8
10	11,1	75	75	70,9	110	17,7	13	17,2	25,2	36	42	9	6	6	42	8
15	16	75	75	70,9	110	21,9	17	22,4	25,2	36	42	9	6	6	42	8
20	20	80	90	73,4	110	27,2	22	28,2	27,7	36	42	9	6	6	45	8
25	24,5	90	100	84,1	135	34	28	33,7	33	42	50	11	6	7	54	10
32	32	110	110	89,3	135	42,7	37	44	41,2	42	50	11	6	7	59	10
40	38	120	125	110	165	48,8	43	50,8	49,3	50	70	14	7	9	74	15
50	50	140	150	119	165	61,3	54	62,6	63,6	50	70	14	7	9	83	15

Dimensions in mm. Permissible deviations ± 2 mm.

ART. 946 / ART. 947

ART. 946

- Stainless steel ball valve:
- 2 pieces with ISO flanges
 - Flanged connection
 - PN 40
 - Flange accommodation: EN 1092*

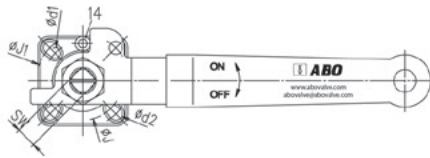


*(ANSI / ASME B16.5 upon request)

OPERATING TORQUES

DN	15	20	25	32	40	50
Nm	4,12	4,22	6,37	12,55	16,37	21,76

Note: The torque figures were measured under 0 pressure at room temperature (without safety factor).



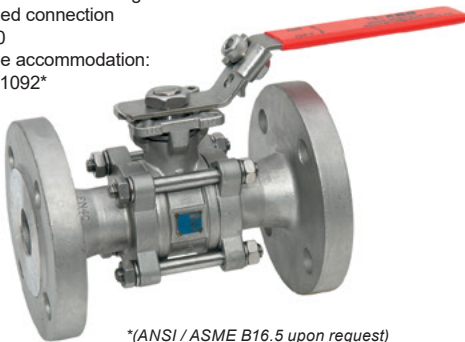
ITEM	PART NAME	MATERIAL	QUANTITY
		Art. 946	
1	Body	EN10213 1.4408	1
2	Ends cup	EN10213 1.4408	1
3	Seats	PTFE + 15% G.F.	2
4	Ball	EN10213 1.4408	1
5	Stem	EN10213 1.4408	1
6	Body seal	PTFE / GRAPHITE	1
7	Gasket	PTFE + 15% G.F.	1
8	Seal	PTFE / GRAPHITE	1
9	O-ring	VITON	1-2
10	Gland ring	SUS 304	2
11	Elleville spring washer	SUS 301	2
12	Handle	SUS 304	1
13	Lever nut	SUS 304	2
14	Stop screw	SUS 304	1
15	Plastic coating	VINYL	1
16	Looking tab	SUS 304	1
17	Spring	SUS 316	1
18	Static device	SUS 316	1
19	Bolts	A2-70	4-6

DN	A	B	C	D	E	F	G	H x N	L	L1	I	P	Q	J	J1	d1	d2	SW
15	16	45	65	95	89	114	16	14 x 4	115	130	2	54	8	36	42	6	6	9
20	20	58	75	105	89	114	18	14 x 4	120	150	2	56	8	36	42	6	6	9
25	25	68	85	115	101	187	18	14 x 4	125	160	2	62,5	12	42	50	6	7	11
32	32	78	100	140	112	187	18	18 x 4	130	180	2	72	12	42	50	6	7	11
40	40	88	110	150	116	222	18	18 x 4	140	200	3	78	14,8	50	70	7	9	14
50	50	102	125	165	125	222	20	18 x 4	150	230	3	87,2	14,8	50	70	7	9	14

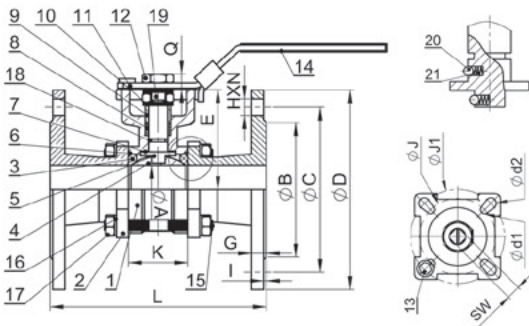
Dimensions in mm. Permissible deviations ± 2 mm. Bigger DN upon request.

ART. 947

- Stainless steel ball valve:
- 3 pieces with ISO flanges
 - Flanged connection
 - PN 40
 - Flange accommodation: EN 1092*



*(ANSI / ASME B16.5 upon request)



OPERATING TORQUES

DN	15	20	25	32	40	50	65	80	100
Nm	3,73	5,10	6,57	9,61	16,47	32,16	61,76	78,43	132,35

Note: The torque figures were measured under 0 pressure at room temperature (without safety factor).

ITEM	PART NAME	MATERIAL	QUANTITY
		Art. 947	
1	Body	EN10213 1.4408	1
2	End caps	EN10213 1.4408	2
3	Seats	PTFE + 15% G.F.	2
4	Ball	CF8M/316	1
5	Stem	SUS 316	1
6	Body seal	PTFE	2
7	Gasket	PTFE + 15% G.F.	1
8	Seal	PTFE	1
9	Gland ring	SUS 304	2
10	Belleville spring washer	SUS 301	2

ITEM	PART NAME	MATERIAL	QUANTITY
11	Handle	SUS 304	1
12	Lever nut	SUS 304	1
13	Stop screw	SUS 304	1
14	Plastic coating	PVC	1
15	Bolts	SUS 304	4 / 6
16	Spring washer	SUS 304	8 / 12
17	Bolts nut	SUS 304	8 / 12
18	O-ring	VITON	1 / 2
19	Locking tab	SUS 304	1
20	Static device	SUS 316	2
21	Spring	SUS 316	2

DN	A	B			C			D			SW	d1	d2	Q
		ANSI	PN16	PN40	ANSI	PN16	PN40	ANSI	PN16	PN40				
15	16	35	45	45	66,5	65	65	95	95	95	9	6	6	8
20	20	43	58	58	82,5	75	75	117	105	105	9	6	6	8
25	24,5	51	68	68	89	85	85	124	115	115	11	6	7	12
32	32	64	78	78	98,5	100	100	133	140	140	11	6	7	12
40	38	73	88	88	114,3	110	110	155	150	150	14	7	9	14,3
50	50	92	102	102	127	125	125	165	165	165	14	7	9	14,3
65	65	105	122	122	149,3	145	145	190	185	185	17	9	11	17,1
80	80	127	138	138	168	160	160	209	200	200	17	9	11	17,1
100	100	157	158	160	200	180	190	254	220	235	17	9	11	17,1

DN	E	G			I			H x N			K	L		J	J1
		ANSI	PN16	PN40	ANSI	DIN	ANSI	PN16	PN40	ANSI		DIN			
15	42,3	14,2	14	16	1,6	2	16 x 4	14 x 4	14 x 4	25,2	139,7	130	36	42	
20	44,8	15,7	16	18	1,6	2	19 x 4	14 x 4	14 x 4	27,2	152,4	150	36	42	
25	54	17,5	16	18	1,6	2	19 x 4	14 x 4	14 x 4	33	165,1	160	42	50	
32	59,2	19	16	18	1,6	2	19 x 4	18 x 4	18 x 4	41,2	177,8	180	42	50	
40	73,5	20,5	16	18	1,6	3	22 x 4	18 x 4	18 x 4	49,3	190,5	200	50	70	
50	82,9	22,5	18	20	1,6	3	19 x 8	18 x 4	18 x 4	63,6	215,9	230	50	70	
65	107	25,4	18	22	1,6	3	22 x 8	18 x 4	18 x 8	82,1	241,3	290	70	102	
80	117	28,4	20	24	1,6	3	22 x 8	18 x 8	18 x 8	95,8	282,4	310	70	102	
100	132	31,8	20	24	1,6	3	22 x 8	18 x 8	18 x 8	117,8	304,8	350	70	102	

Dimensions in mm. Permissible deviations ± 2 mm.

ACTUATORS

ELECTRIC ACTUATOR ART. SM500

2" 1/2–3"–4"

- Voltage: 24VAC–230 VAC
- Operating time: 0–90°: 60 sec–150 sec
- Operating torque: 38 Nm–100 Nm
- Protection enclosure: IP 65
- Working temperature: -10 °C to + 55 °C



ELECTRIC PART-TURN ACTUATOR SP 0.1

- Max. load torque: 50 Nm
- Operating time: 10–160 (s/90°)
- Operating angle: 60°–360°
- Working temperature: -25 °C to + 55 °C
- Protection enclosure: IP 65 / IP 67
- Operating position: any position
- Weight: 3,2 kg–5,2 kg



ELECTRIC PART-TURN ACTUATOR SP 1

- Max. load torque: 80 Nm
- Switching-off torque: 90 Nm
- Operating time: 10–80 (s/90°)
- Operating angle: 60°–360°
- Working temperature: -25 °C to + 55 °C
- Protection enclosure: IP 65 / IP 67
- Operating position: any position
- Weight: 6,5 kg–8,3 kg



PNEUMATIC ACTUATORS ABO SERIES 95

Design:

- Single acting
- Double acting

Standard angles:

- Rotation 90°, 120°, 180° and 240°.

Customized angles available as well as three position versions.

Stroke adjustment:

- GTW type: 0° Position from -25° to +5°, 90° Position from -5° to +5°
- GTK, GTX type: 90°-Position from -5° to +5°

Torques:

- 5–8 000 Nm

Temperature range:

- Standard: From -50 °C to +70 °C (NBR)
- Special version: From -15 °C to + 160 °C (Viton) or -30 °C to +200 °C (Silicone)



EUROPEAN UNION
European Regional Development Fund
Operational Programme Enterprise
and Innovations for Competitiveness

All statements, technical information in this brochure are tentative and for general use only and do not constitute a recommendation or guarantee for any specific service or application requirement. Consult ABO representative or factory for specific requirements and material selection for your intended application. The right to change or modify product design or product without prior notice is reserved. Binding specification will be provided in each offer. ABO valve accepts no liability for damages caused by bad interpretation or use of the information included in this brochure.


1. 2. 2019

Data subject to change.


 **Company HQ – Czech Republic:**
ABO valve, s.r.o.
Dalimilova 285/54, 783 35 Olomouc
Tel.: +420 585 224 087
Email: export@abovalve.com
www.abovalve.com

 **USA:**
ABO Controls, LLC
Houston, Texas
Tel.: +1 (281) 930-7126
Email: salesUSA@abovalve.com
www.abocontrols.com


 **Singapore:**
ABO Valve Pte. Ltd.
Singapore
Tel.: +65 9169 4562
Email: lsw@abovalve.com
www.abovalve.com

 **Slovakia:**
ABO Slovakia s.r.o.
Banská Bystrica
Tel.: +421 484 145 633
Email: aboslovakia@aboslovakia.sk
www.aboslovakia.sk


 **Bahrain:**
ABO Middle East
Manama
Tel.: +973-3444 9065
Email: jimimichen@abovalve.com
www.abovalve.com

 **United Arab Emirates:**
ABO UAE
Abu Dhabi
Tel.: + 971 56 9207964
Email: bharti@abovalve.com
www.abovalve.com

 **Germany:**
ABO Armaturen GmbH
Mönchengladbach
Tel.: +49 2166 310 16 76
Email: salesDE@abovalve.com
www.abo-armaturen.de

 **Russia:**
ABO ARMATURA LLC
Smolensk
Tel.: +7(4812) 240 020
Email: aboarmatura@yandex.ru
www.aboarmatura.ru

 **Brazil:**
ABO do Brasil Válvulas
Industriais Eireli
Valinhos
Tel.: +55 11 3451 4444
Email: export@abovalve.com
www.abovalve.com

 **Ukraine:**
ABO Ukraine LLC
Dnipro
Tel.: +38 056 733 95 70
Email: a.marushchak@abovalve.com
www.abovalve.com.ua

 **Turkey:**
ABO Armaturen LTD STI
Istanbul
Tel.: +90-216 527 36 34
Email: m.sahin@abovalve.com
www.abovalve.com

 **China:**
ABO Flow Control
Shanghai
Tel.: +86 13601522831
Email: wen@abovalve.com
www.abovalve.com

 **India:**
ABO Controls Pvt. Ltd.
Mumbai
Tel.: +91 99 2002 9994
Email: dsouza@abovalve.com
www.abovalve.com