

# Help Your CPAP Intolerant Patients

Talk to them about Inspire



- A small device inserted in an outpatient procedure
- Patient controlled with the Inspire sleep remote
- Cloud-based adherence monitoring
- Covered by most U.S. insurance companies

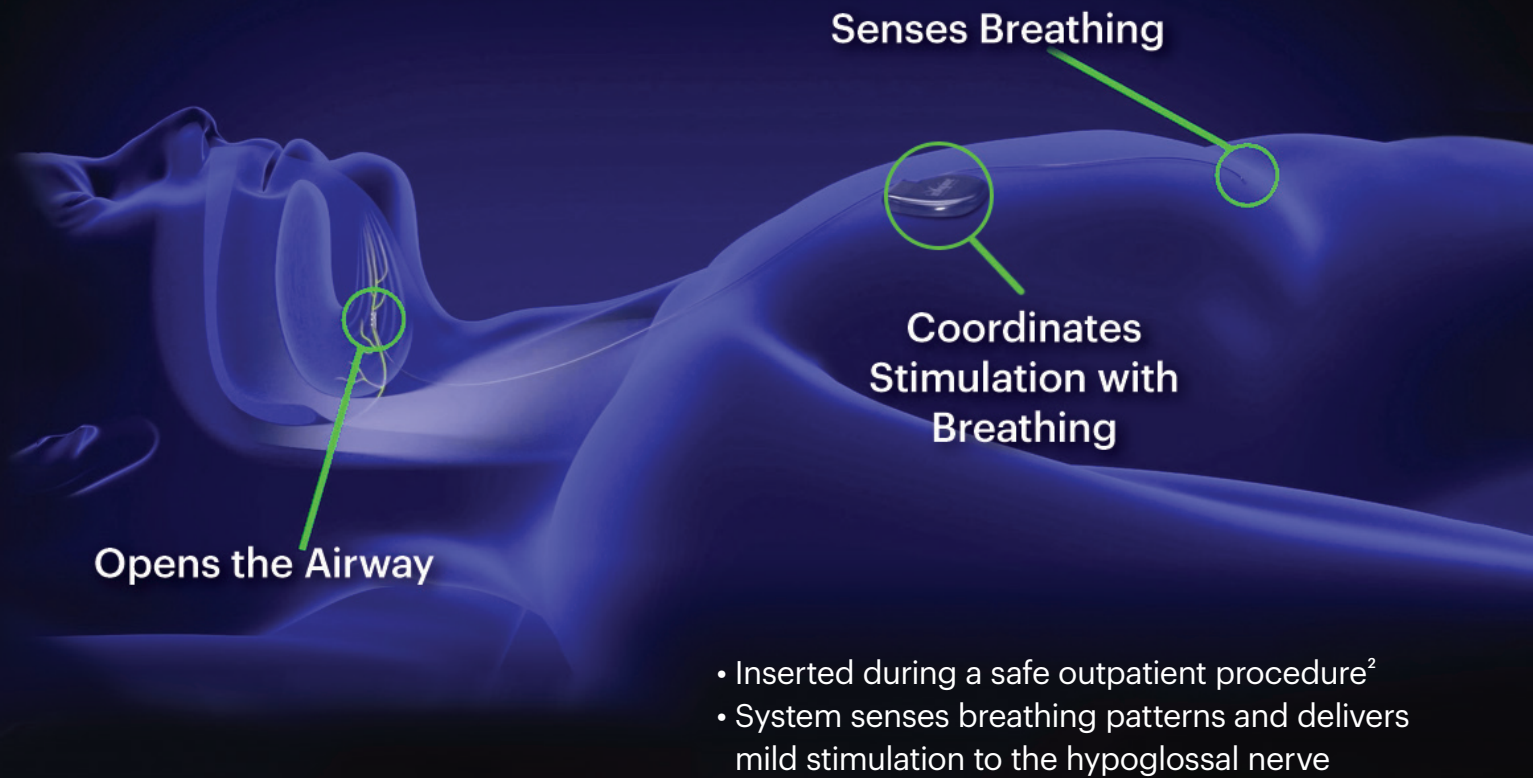
**79%**<sup>1</sup>

reduction in sleep apnea events

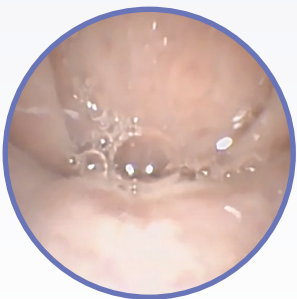
**94%**<sup>2</sup>

of patients are satisfied with Inspire

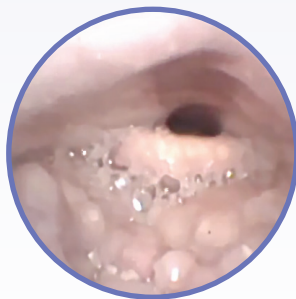
# Inspire Delivers Motor Nerve Stimulation



## Inspire Restores Muscle Tone & Opens The Upper Airway During Sleep



Palate



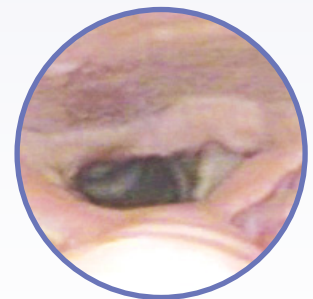
Tongue Base

### Obstructed Airway



Palate

180% increase  
in airway dimension



Tongue Base

130% increase  
in airway dimension

### Open Airway

At therapeutic titrated levels, Inspire therapy prevents the airway from collapsing to facilitate unobstructed breathing

# Inspire Is Simple To Use



The Inspire Remote

## Patient Control

- Inspire is controlled by a hand-held sleep remote
- Patients simply turn Inspire on before bed and off upon waking

## In Office Activation Visit

- A healthcare professional programs initial settings for comfort and effectiveness

## Sleep and Fine Tuning

- Patients use Inspire at home for a few months and self-optimize
- A sleep study confirms settings for best results

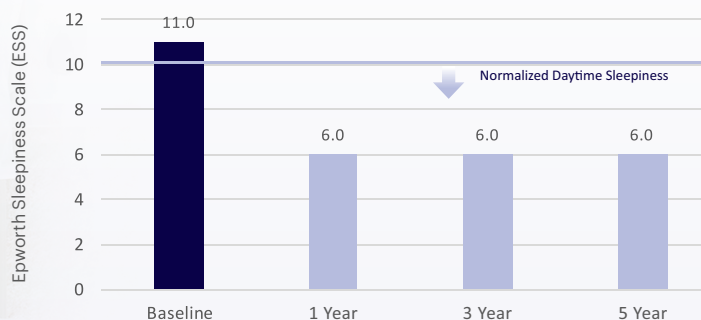
# Inspire Workflow Mirrors CPAP



# Sustained Clinical Results

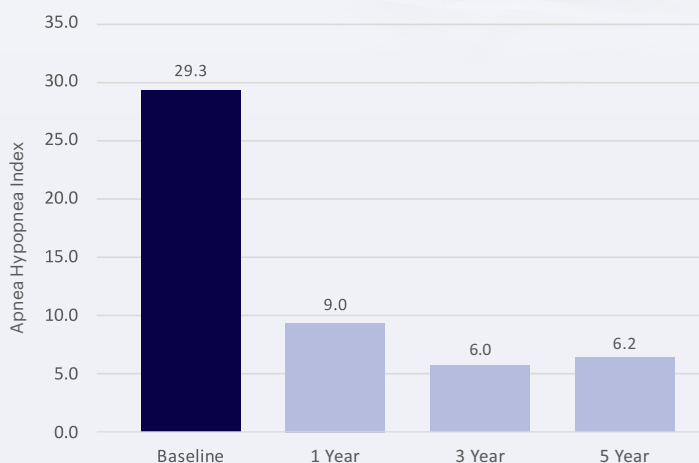


## Significant decrease in daytime sleepiness<sup>1</sup>



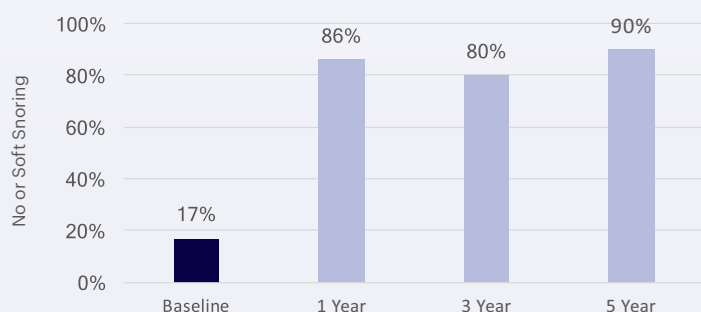
All p values < 0.01 vs. baseline. Results in median.

## Significant decrease in apnea events maintained over 5yrs<sup>1</sup>



## Significant reduction in snoring<sup>1</sup>

% of Bed Partners Reporting No or Soft Snoring



## Over 100 peer-reviewed publications

- STAR Trial; 5-Year follow-up data
- ADHERE Registry; Over 1,200 enrolled

## Most US Insurance Covers Inspire

- Broad commercial coverage
- Medicare coverage across the US
- Many VA and military hospitals

## Many of your patients may be eligible for Inspire

- Moderate to severe OSA (AHI 15-65 with <25% central and mixed apnea)
- Unable to get consistent CPAP benefit
- Not significantly obese
- At least 22 years of age

Risks associated with the surgical implant procedure are low but may include infection and temporary tongue weakness. Most patients acclimate well to the presence of the Inspire system and to the therapeutic stimulation. Some patients may require post implant adjustments to the system's settings in order to improve effectiveness and ease acclimatization. For complete indications, contraindications, and important safety information visit:

[Professionals.InspireSleep.com](https://www.Professionals.InspireSleep.com)

 **Inspire**  
Sleep Apnea Innovation

<sup>1</sup>1-year STAR data: Strollo et al., NEJM 2014 <sup>2</sup>Heiser, ERJ 2019 <sup>3</sup>Woodson et al., OTO-HNS 2018