



BRISLINGTON FOOTBALL CLUB

Official Matchday Programme



Brislington vs Westbury United

Tuesday 15th September 2020

KO 7.30pm

The Poplar Insulation Stadium

**Website -
brislingtonfc.net**

100'S OF TRADE BRANDS AVAILABLE

Supporting Non-League Football



With our large range of trade brands available, getting the right kit has never been easier.



For our full range, pick up a catalogue or visit toolstation.com

TOOLSTATION



AngieH Driving Academy

07724829090

Sponsor of Kevin Hazell
& Danny Barwood

MESSAGE FROM THE BOARD

Today we welcome Hallen to the Poplar Insulation Stadium we hope their players, officials and supporters enjoy their brief stay with us and have a safe journey home.

Thank you to all the people who have purchased advanced tickets for the games so far we really appreciate it.

At the moment we are pleased that we have had healthy crowds for both our first 2 home games. We hope that spectators will continue to support grassroots football your support is much appreciate.

We would like to wish Mark Penny well as the Reserves start their season today away to Imperial.

We are trying our best as a club to ensure you feel safe when you visit Brislington FC. Please respect our Covid-19 measures and respect other people's space around the ground.

The 3 match pool is now up and running if you'd like the chance to win upto £500 by guessing 3 correct results please see Sharon behind the bar.

We would like to thank our sponsors for your continued support especially during these difficult times.



Sponsor of Rich Ford & Scott Lewis



SPONSORSHIP OPPORTUNITIES

We have numerous sponsorship opportunities available from match ball sponsor, individual player sponsors and match day packages.

If you would like to become a sponsor of Brislington FC please contact Kevin Hazell by email kevinhazell@me.com to find out about our extensive range of packages to suit all budgets.

The logo for Smart Access Scaffolding Ltd. It features the word "Smart" in orange, "Access" in black, and "Scaffolding Ltd" in white, all on an orange background. A small icon of a person on a scaffold is next to "Smart".

Smart 
Access
Scaffolding Ltd

Bristol: 07557 046808

W.S.M: 07721 020205



Sponsor of Jayden
Nielsen

Sponsor of Mark
Fear

FROM THE DUGOUT

Yesterday we welcomed Hallen to the Poplar Insulation Stadium. Another decent crowd watched the two sides play out a feisty 0-0 draw.

Perksy has to make an enforced change with James Peart coming in for the suspended Barwood.

The game had an edge to it from the start and unfortunately poor decisions by the official did not help matters. Hallen probably shaded the first half spurning a few chances. George Dorrington made a couple of decent saves but had to receive lengthy treatment on 38mins when he was caught by a late challenge and received facial injuries. To everyone's amazement the Hallen player only received yellow card. HT 0-0

We started the 2nd half the better side and were playing some good football sub Mason Dagger was put through only to see the keeper make a decent save.

The closest we came was when Cameron Brown rattled the bar from a fierce shot from outside the box.

On 58mins a late challenge from Miller (no worse than the challenge on Dorrington) resulted in some heated exchanges between players from both sides. By the time the Ref got control he decided to sin bin a Hallen player before showing Miller a red card so both sides were down to 10. On 63mins we were down to 9 when Neuvo - Draper was sin binned. Hallen were back up to 11 v our 9. But resolute defending, good goalkeeping & poor finishing seen us through. Dagger had a virtually identical chance to his earlier one but again the keeper saved well.

Final score 0-0 we defended well and definitely has chances to win

Next up is Westbury on Tuesday followed by Odd Down in the FA Vase next Saturday



Today's Squads

SHIRTS - RED / BLACK

SHORTS - BLACK

SOCKS - RED

GOALKEEPER - LIME GREEN

1. GEORGE DORRINGTON
2. MARK FEAR
3. LEWIS DUNN
4. SCOTT LEWIS
5. CONOR McCORMACK
6. DANNY BARWOOD
7. FRANK GINGELL
8. RUBEN NEUVO - DRAPER
9. NEIKELL PLUMMER
10. KYE SIMPSON
11. REEKO BEST
12. KRISS MILLER
13. JAYDEN NIELSEN
14. CAMERON BROWN
15. CONOR O SULLIVAN
16. CLARKE TAYLOR
17. ASHLEY BARNARD
18. MASON DAGGER
19. MIKE RIMMER
20. JAMES PEART

MANAGER - LEE PERKS

ASSISTANT MANAGER - RICH FORD

ASSISTANT MANAGER / PHYSIO - KEVIN HAZELL

**Sponsor of Kriss Miller is
Andy Bedingfield**



1. MARK BOWDEN
2. DAN JORDAN
3. JAKE HUTCHINGS
4. DAN PRICE
5. JOSH HOWE
6. JAMIE GREGORY
7. SCOTT GREGORY
8. JOSH FERGUSON
9. JOE STRADLING
10. WILL THOMSON
11. JORDAN PINDER
12. STEVE HULBERT
13. BEN GRIFFITHS
14. CALLUM DEMKIV
15. RICKY HULBERT

MANAGERS - LEWIS PORTER / RICKY HULBERT

1st TEAM COACHES - SCOTT ARMSTRONG / LUKE SMITH

PHYSIO - MARTIN PENNY

1st AID - WILL BUNDY

OFFICIALS

REFEREE - OLLIE TAYLOR

ASSISTANTS - MASON BEAN / ANDREW DAVEY



FIXTURES 2020 / 2021

DATE	KO	H / A	Fixture	Result	Scorers
01st Sept	1930	H	Cadbury Heath (FA Cup)	0-2	Plummer 2 Simpson Barwood
05th Sept	1500	H	Bradford Town	4-3	
12th Sept	1500	H	Hallen	0-0	
15th Sept	1930	H	Westbury United		
19th Sept	1500	A	Odd Down (FA Vase)		
26th Sept	1500	H	Plymouth Parkway		
29th Sept	1930	A	Odd Down		
03rd Oct	1500	H	Buckland Athletic		
10th Oct	1500	A	Bridport		
13th Oct	1930	H	Chipping Sodbury Town		
17th Oct	1500	A	Cribbs		
20th Oc	1930	A	Bitton		
24th Oct	1500	A	Shepton Mallet		
27th Oct	1930	H	Clevedon Town		
31st Oct	1500	H	Tavistock		
07th Nov	1500	H	Bitton		
14th Nov	1500	A	Chipping Sodbury Town		
21st Nov	1500	A	Bradford Town		
28th Nov	1500	A	Clevedon Town		
05th Dec	1500	H	Cribbs		
12th Dec	1500	A	Tavistock		
26th Dec	TBC	A	Keynsham Town		
02nd Jan	1500	H	Odd Down		
09th Jan	1500	A	Street		
16th Jan	1500	A	Buckland Athletic		
30th Jan	1500	H	Cadbury Heath		
06th Feb	1500	H	Wellington		
13th Feb	1500	A	Hallen		
20th Feb	1500	H	Street		
27th Feb	1500	A	Westbury United		
06th Mar	1500	H	Roman Glass St George		
13th Mar	1500	A	Exmouth Town		
20th Mar	1500	A	Cadbury Heath		
27th Mar	1500	H	Bridgwater Town		
02nd Apr	TBC	H	Keynsham Town		
05th Apr	TBC	A	Wellington		
10th Apr	1500	H	Shepton Mallet		
17th Apr	1500	A	Roman Glass St George		
24th Apr	1500	A	Plymouth Parkway		
01st May	1500	H	Exmouth Town		
08th May	1500	A	Bridgwater Town		
15th May	1500	H	Bridport		

BRISLINGTON PLAYER SPONSORS

GEORGE DORRINGTON - ADVIS BUILDING & ROOFING
BEN PAYTER - AVAILABLE TO SPONSOR
MARK FEAR - THE 3 LIONS
SCOTT LEWIS - EASYRUNNER
MITCH GREENSLADE - AVAILABLE TO SPONSOR
KYE THOMAS - AVAILABLE TO SPONSOR
JASON LLAMA - AVAILABLE TO SPONSOR
CONOR McCORMACK - LYNWOOD CIVIL ENGINEERING
ASHLEY BARNARD - AVAILABLE TO SPONSOR
DANNY BARWOOD - ANGIEH DRIVING ACADEMY
LEWIS DUNN - COMBINED ELECTRICAL SERVICES
CONOR O SULLIVAN - AVAILABLE TO SPONSOR
RUBEN NUEVO - DRAPER - BRISTOL BEDS
JAYDEN NIELSEN - SMART ACCESS SCAFFOLDING
MIKE RIMMER - AVAILABLE TO SPONSOR
JAMES PEART - HICKERY BROTHERS SCAFFOLDING
CLARKE TAYLOR - AVAILABLE TO SPONSOR
CAMERON BROWN - AVAILABLE TO SPONSOR
FRANK GINGELL - AVAILABLE TO SPONSOR
REEKO BEST - AS FOOTY REVIEW
KRISS MILLER - ANDY BEDINGFIELD
MASON DAGGER - AVAILABLE TO SPONSOR
NEIKELL PLUMMER - BRISTOL BEDS
KYE SIMPSON - ADVIS BUILDING & ROOFING

LEE PERKS - EXPRESS WINDSCREENS
RICH FORD - EASYRUNNER
KEVIN HAZELL - ANGIEH DRIVING ACADEMY

Please email kevinhazell@me.com if you would like to sponsor player



Sponsor of Lee Perks

bristol-beds.co.uk

...and mattresses, sofas furniture *and more*

The easiest and cheapest way to buy beds and sofas

Sponsor of Ruben Nuevo-Draper &
Neikell Plummer



Poplar Insulation

Specialist thermal insulation for
the **industrial**, **commercial**, **retail**,
leisure and **educational** sectors
for over 25 years.



Contact Address:
Longacre, Hursley Hill
Bristol
BS14 0QZ
Tel: 01275 839 654
Email: info@lynwoodcivil.co.uk

Depot Address:
The Rear of The Old Brislington Fire Station
14 Bonville Road
Brislington
Bristol BS4 5QF
Tel: 01179 772636

Sponsor of Conor
McCormack



FUNCTION ROOM FOR HIRE



**Business Meetings, Birthday Parties,
Conferences & Presentations,
Anniversary Celebrations, Wedding
Receptions, Engagements,
Christenings & Other Celebratory
Events**

CONTACT SHARON WHELAN 07429 622306 FOR MORE INFORMATION

VANS | 365

**Advis Building & Roofing
Services**

Sponsor of George Dorrington
& Kye Simpson

CLICK & COLLECT

FROM 5 MINS AT
400+ BRANCHES

With over 400 branches, we're on hand to help you get the job done, with prices that are always low.

Now that's a result!

**400+ UK
BRANCHES**



Supporting Non-League Football



TOOLSTATION

100'S OF TRADE BRANDS AVAILABLE

With our large selection of trade brands available, getting the right kit has never been easier.

DEWALT

Drayton

by Schneider Electric

mira
SHOWERS

Dulux
TRADE

STANLEY
FATMAX



**For our full range, pick up a
catalogue or visit toolstation.com**

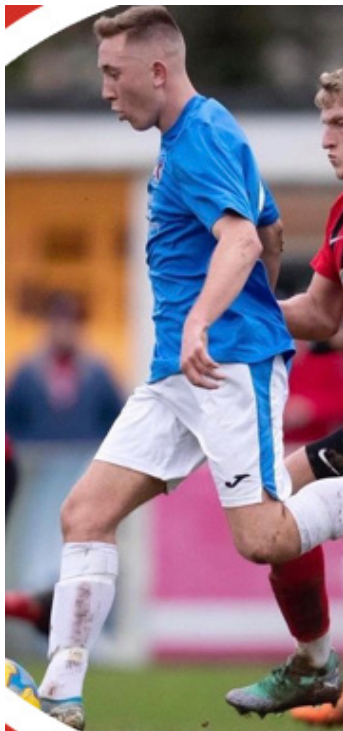
Supporting Non-League Football



TOOLSTATION

**TICKETS NOW AVAILABLE FOR
ALL HOME GAMES
EMAIL kevinhazell@me.com FOR
INFORMATION**

PLAYER PROFILE - Jayden Nielsen



Name :Jayden
Age :18
Occupation :🏠
Nickname :Great Dane
Position :attacking midfielder
Previous Clubs :Bristol city
academy mendip broadwak

Favourite Player :hazard
Who do you Support :Chelsea
Best game played in :won 2-0
against psv
Best / worst moment in
football :missed pen
Best Ground / worst ground played
on :Ashton gate /filwood fields

Music / Genre :
Takeaway :McDonald's
Pre Match meal :porridge
Alcoholic drink :ciroc with a ice 🍹
TV / Film :
Holiday Destination :Ayia napa

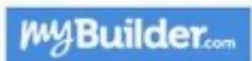
All below at Bris
Best / worst Trainer :me worst
Tristan
Comedian :Scott Lewis
Worst Dressed :Fordy
Always Late :me
Biggest Moaner :neikel
Would not want to share a room
with lee perks #yfront :

Cleverley Builders Ltd

Building & Decorating Contractors

CALL US FOR A FREE QUOTATION

0117 9780350
0797 1683458



Player Profiles 2020 / 21

George Dorrington - Goalkeeper

Signed from Odd Down just before the season was cut short. Has a great pedigree having played for Man U & Huddersfield U23s. A very vocal keeper & great shot stopper. As with recent Bris keepers seems to like a pint.

Mitch Greenslade - Defender

Came through the junior section before spells at other clubs. Strong defender who can play right back or centre half. Was unlucky last season with a couple of harsh red cards.

Mark Fear - Defender

2nd season at the club after signing from Hengrove. Plays at left back strong in a tackle and good with the ball at his feet. Scored either the luckiest or great winning goal at Bridport last season.

Scott Lewis - Defender

Previously at Hengrove. Strong no nonsense vocal centre half who is a good leader on the pitch. Thought to be the club joker. Scored the last goal of last season with a last minute header vs Wellington.

Conor McCormack - Defender

New signing this season previously at Frome Town & Chippenham Town. Has looked strong and confident and will strengthen the back four.

Ashley Barnard - Defender

New signing this season previously at Seymour United & Longwell Green. Strong centre half who will get stuck in. Looks comfortable on the ball as well.

Kye Thomas - Defender

4th season at the club after being at Yate & Bridgwater. Footballing defender who is comfortable with the ball at his feet. Current club captain

Danny Barwood - Defender / Midfield

Apart from a short spell at [Hengrove](#) has been at Bris since he was a teenager. Another strong grappling defender who will get stuck in where it hurts.

Lewis Dunn - Defender / Midfield

Has been at Bris since he was 7. Has had spells at Hengrove, Welton & Odd Down but always [come back home](#). Good with the ball at his feet and decent in the air as well.

Conor O Sullivan - Defender

New signing this season after 2 years out due to work. Was previously with Clevedon & Weston and has looked decent in pre season and looks like he will be a good addition.

Ruben Nuevo Draper - Midfield

New signing previously at Cadbury Heath & Bitton. Midfield playmaker with loads of energy. Always looking for the ball.

**Go to our website for the latest
news brislingtonfc.net**

Jayden Nielsen - Midfield

3rd season with us after breaking into the side at 16. Great left foot and skill to go with it never seems to score an easy goal. Never set your watch buy him as he's always late.

James Peart - Midfield

Teams longest serving player been at Bris for about 18 years. Will always give 100% and never let you down. Still one of the fittest players in the team.

Reeko Best - Midfield

Signed from Odd down last season tricky player who loves to run at players and will chip in with important goals.

Kriss Miller - Midfield

Back after a short spell last season clever player who can unlock defences with one pass will also chip in with spectacular goals as well.

Cameron Brown - Midfield / Forward

New signing from Lebeq but has played for Aldershot & Bristol City. When he is fit will be a asset to the team always wants the ball and looking to unlock defences.

Frank Gingell - Midfield / Forward

Leaves the club but always comes back. Quick player who will cause full backs problems. Also has an eye for goal and regularly scored 20+ goals from wide positions.

Mason Dagger - Forward

3rd season at the club but missed most of last season when he went travelling. Has a bit pace, decent in the air and will chip in with goals.

Neikell Plummer - Forward

3rd spell at the club and virtually guaranteed to get you 20+ goals a season not many better finishers in the league and loves pens & free kicks. Known to like a bit of a winge.

Kye Simpson - Forward

New signing from Roman Glass. Pacy forward who has a keen eye for goal which he has shown in pre season.

Management**Lee Perks - Manager**

Starting his 5th season in charge after stepping up from the Reserves. Was a prolific goal scorer in local football. Works hard to get decent players to the club.

Rich Ford - Assistant Manager

Was on the books of Notts Forest when was younger and played professionally for Torquay as well as a host of local clubs. This his 3rd season at the club.

Kevin Hazell - Assistant Manager / Physio

Been at the club nearly 20 years as a player & Manager. Is the club secretary, kit man & now Covid officer. Has great passion for the club





Reserve Team Fixtures

DATE	KO	H/A	FIXTURE	RES	SCORERS
12th Sept	1500	A	Imperial	1-0	
19th Sept	1500	A	Chew Magna		
26th Sept	1500	A	Glastonbury		
03rd Oct	1500	A	Radstock Town Reserves		
10th Oct	1500	A	Long Ashton		
17th Oct	1500	H	Cheddar Reserves		
24th Oct	1500	A	Portishead Town Reserves		
07th Nov	1430	A	Ashton & Backwell Reserves		
14th Nov	1430	H	Peasedown Miners Welfare		
21st Nov	1430	H	Castle Cary		
05th Dec	1400	A	Peasedown Miners Welfare		
12th Dec	1400	H	Hutton		
19th Dec	1400	H	Long Ashton		
28th Dec	TBC	H	A.F.C. Brislington		
09th Jan	1400	A	Castle Cary		
16th Jan	1400	H	Portishead Town Reserves		
23rd Jan	1400	H	Radstock Town Reserves		
06th Feb	1430	A	Fry Club Reserves		
13th Feb	1430	H	Ashton & Backwell Reserves		
20th Feb	1430	A	Hutton		
27th Feb	1430	H	Chew Magna		
13th Mar	1500	H	Imperial		
20th Mar	1500	H	Glastonbury		
27th Mar	1500	A	A.F.C. Brislington		
03rd Apr	1500	A	Cheddar Reserves		
17th Apr	1500	H	Fry Club Reserves		

eve
PASS

Check in anywhere safely and easily
with evePASS



KYUYPP

Open Camera App 
Scan Code 🖱️

TRACK & TRACE

Go to **evepass.app** and download the app and use
the QR code around the ground to sign in for track & trace purposes —

BRISLINGTON FC
WHO ARE WE

PRESIDENT - Chris Elston
CHAIRMAN - Steve Jenkins
VICE CHAIRMAN - Lee Williams
TREASURER - Phil Vicary
SECRETARY - Kevin Hazell
CLUBHOUSE MANAGER - Sharon Whelan
GROUNDSMAN - Steve Rogers
COVID-19 OFFICER - Kevin Hazell
COMMITTEE MEMBERS - Richard Dennis, Jay Whelan
1st TEAM MANAGER - Lee Perks
RESERVE TEAM MANAGER - Mark Penny
YOUTH TEAM MANAGER - Mark Penny
LADIES TEAM MANAGER - Jason Kirby / Dean Gunter



Apple Joinery



ALL NHS STAFF GET FREE ENTRY
IF THEY PRODUCE THEIR NHS CARD





THE TOOL BOX

ELECTRICAL SERVICES

0781 2837 281 | ELECTRICAL@TOOLBOXBRISTOL.COM



CONTENTS / INTRODUCTION

1. Self isolation
2. Procedure if someone falls ill
3. Travel to and from football club
4. Club access points and pedestrian routes
5. Hand washing
6. Toilet facilities
7. Avoiding close contact between club member & users
8. Cleaning
9. Use of clubhouse
10. Changing rooms
11. Playing equipment

Introduction

Brislington Football Club recognise that operating during the Coronavirus Pandemic requires us to ensure we are protecting our members and users whilst minimising the risk of spreading infection.

The systems implemented are intended to introduce consistent measures in the football club in line with the Government's current recommendations on social distancing.

These are exceptional circumstances and Brislington Football Club and our members recognise that we must comply with the latest government & FA advice on Coronavirus at all times.

The health & safety requirements the football clubs must not be compromised at this time. If an activity cannot be undertaken safely due to lack of suitably qualified personnel being available or social distancing being implemented, it should not take place.

NOTE

Brislington FC club management will monitor the systems implemented and if it is not consistently implementing the measures set out below. It may be required to shut down.

5. Hand washing

- Provide additional hand washing / sanitizer facilities in various places around the ground.
- Ensure soap and fresh water is readily available and kept topped up.
- Regularly clean hand washing facilities and check soap / sanitizer levels.
- Provide suitable and sufficient rubbish bins for hand towels which are regularly emptied. Bins should be cleaned after the club is shut.
- Turn off warm air hand dryers.

6. Toilet facilities

- Operate a one out one in policy for use of toilets unless social distancing can be maintained.
- Enhance cleaning regimes for toilets (at least every hour)
- Provide suitable and sufficient rubbish bins for hand towels which are regularly emptied. Bins should be cleaned after the club is shut.

7. Avoiding close contact

- Try to avoid close contact. Brislington FC recognise there may be situations where it is not possible to maintain social distancing and to limit close contact to the minimum time that is possible.
- Try to ensure that non essential physical work that requires close contact should not be carried out.
- Any work that involves skin to skin contact will not be carried out.
- Ensure single use PPE is available and disposed of correctly.
- Increase ventilation in enclosed spaces.

8. Cleaning

Brislington FC recognise that enhanced cleaning procedures will have to take place particularly in communal areas and touch points.

- Taps & washing facilities.
- Toilet flushes & seats.
- Door handles & push plates.
- Handrails.
- Machinery & equipment.
- Phones, televisions, CCTV.
- Deep cleans carried out at regular intervals.

1. Self isolation

Anyone who meets one of the following criteria should not come to the football club.

- Has a high temperature, new persistent cough or has experienced loss of taste or smell - follow guidance on self isolation.
- Is a vulnerable person (by virtue of their age, underlying health condition or clinical condition).
- Is living with someone in self - isolation.
- Has been contacted by the government track & trace department.

2. Procedure if someone falls ill.

If anyone who has been present at the club falls ill with any coronavirus symptoms then that person needs to contact the club's COVID-19 Officer immediately. That person needs to arrange for a coronavirus test straight away.

The clubs COVID-19 officer will then check the club signing in book and contact the government track & trace department to inform them of a possible infection within the club. The procedures set out by the government must be followed.

The football club will then receive a deep clean.

3. Travel to and from the football club.

Whenever possible club members & players should travel to the football club using their own transport.

- If possible members & players should avoid public transport.
- If traveling in the same car is unavoidable then the persons in the car should wear face coverings. The car should be cleaned thoroughly after use.

4. Access points and pedestrian routes.

- If possible arrange staggered entry and exit times for arrivals at the football club ie :- home / away teams / officials arriving at pre arranged times.
- Monitor entry / exit points to ensure social distancing is being maintained at all times. If needed mark lines at least a metre apart.
- All persons entering the ground wash or sanitize their hands.
- Arrange deliveries for off peak times eg before players / officials arrive or a different day.
- If possible mark out a designated one way pedestrian route around the ground to avoid the need for customers, staff & players to pass each other i.e one way in one way out.

10. Use of clubhouse.

Government guidelines for bars and clubs should be followed at all times. These to include.

- Signing in book for anyone entering the club.
- One entry & one exit point for the clubhouse.
- Use of contactless payment where possible.
- Maximum of 6 people per table.
- No standing at the bar.

11. Playing games & use of equipment.

- Changing rooms - only use when it is essential and for a limited time only. Only a limited number of persons to which social distancing allows.
- Showers - only to be used if essential and then with social distancing in place.
- Kit - if possible players to wash own kit
- Balls - to be cleaned when possible during the game.
- Goalposts / corner flags to be wiped down at before game / half time / after game.
- Players bring their own drinks bottles which are labelled.
- Physio / first aid only to be administered with full PPE inc masks, gloves and visor if possible.

Follow us on

Twitter @brislingtonfc or

Match day info @brislingtonmat1

Facebook Brislington FC

100'S OF TRADE BRANDS AVAILABLE

Supporting Non-League Football



With our large range of trade brands available, getting the right kit has never been easier.



For our full range, pick up a catalogue or visit toolstation.com

TOOLSTATION

COMING UP IN SEPTEMBER

1ST TEAM

Saturday 5th September - Bradford Town (H)

Tuesday 8th September - Bitton WDS Associate Legal Services Stadium 7.30pm

Saturday 12th September - TBC

Tuesday 15th September - Westbury United (H) 7.30pm

Saturday 19th September - Odd Down (FA Vase) Lew Hill Memorial Ground BA2 8PA

Tuesday 23rd September - Clevedon Town Hand Stadium BS21 6TG 7.30pm

Saturday 26th September - Plymouth Parkway (H)

Tuesday 29th September - Odd Down Lew Hill Memorial Ground BA2 8PA 7.45pm

Reserves

Saturday 12th September - Imperial South Bristol Sports Centre

Saturday 19th September - Chew Magna Chew Valley Leisure Centre

Saturday 26th September - Glastonbury Abbeymoor Stadium

ALL KO TIMES 3PM UNLESS STATED



Westbury United Player Profiles

Ed Baldy- A great shot stopper and a big presence between the sticks, Ed has been first choice keeper for the last couple of seasons. Previous clubs include; Inverness Caledonian Thistle, Woking, Paulton Rovers and Bath City.

Mark Bowden- A new arrival this season, massive presence between the sticks. Brings a lot of experience and leads the defence well.

Lewis Porter- Joint manager Lewis still has what it takes to keep goal if required. Lewis is a fraud Westbury legend having represented them at all levels throughout his playing career.

Jacob Hutchings- A summer signing who has had an outstanding preseason, he has a wand of a right foot and is a dead ball specialist, comfortable playing right or left back. Previous clubs include Odd Down and Melksham Town.

Joshua Howe- Another new signing in the full back department, Josh is a Royal Marine for his day job, I think that's all we need to know. Previous clubs include Frome Town and Frome Town Sports.

Dan Jordan- All round good guy, DJ is a great leader on and off the pitch. His main position is centre back but recently we have seen him operating at full back where he has proved his crossing ability is as good as anyone at the club. Previous clubs include Chippenham Park and Warminster Town.

Jamie Gregory- Another new signing, Jamie can play anywhere across the back line. The former Bristol City & West Brom youngster has had a few years out after featuring for various TWL clubs but made a comeback last season in county league football & steps back up. Previous clubs include Keynsham Town and Cadbury Heath.

Dan Price- Another leader of men. Pricey has parked his bike up for the season and committed his time to football and helping the clubhouse make a profit. Big strong centre back who is dangerous in both boxes. Previous clubs include Chippenham Park and Trowbridge Town.

Scott Gregory- The man mountain Scott joins his brother to make it three pairs of brothers at the Lane this season. Another big strong centre back with good leadership skills. Previous clubs include Radstock Town, Longwell Green and Oldland Abbotonians.

Jordan Pinder- Wants to play centre mid but can and will play anywhere, his blood runs green he loves the club. Has been known to go on a three day bender if he scores. Previous clubs include Warminster Town, The Dursley Arms and The Lion & Fiddle.

Steve Hulbert- Our skipper, long rangy centre midfielder who can play a bit, is equally adept at playing centre back of required. One of the nicest most polite people you will meet off the pitch, no one knows what happens when he crosses the white line. Previous clubs include Melksham Town and Frome Town FC.

Jake Hiscocks- After a couple of seasons our Jaker returns in centre mid. Another dead ball specialist and unofficial five halves club record holder. Previous clubs include Melksham Town and Warminster Town.

Ben Griffiths- A product of the academy system, technically brilliant and a really nice lad. Has been known to complete 3 rounds of five halves in one evening. Previous clubs include Frome Town and Aylesbury United.

Jamie Jordan- A two footed Juan Mata, our little magician, can pull goals or assists from no where. Is the current record appearance holder and longest serving player. Previous clubs include most teams in the Western League.

Will Thomson- A fantastic centre midfielder, loves to be involved in the heart of the game. Has the ability to win a game on his own. Previous club Melksham Town.

Joe Stradling- Speed is the word to describe this man, he's quick and fast and also rapid! Loves to be involved in the thick of the game. Previous clubs include Melksham Town and Larkhall Athletic

Jack Biddiscombe- Another new signing, has been flying in pre season. He looks like a hard working winger who likes to pop up in goal scoring positions, will be a real asset to the squad. Previous club Radstock

Ricky Hulbert- Player manager, non league legend Ricky spent most of his years playing in the Southern League. He has his very own fan club. Previous clubs include Frome Town and Yate FC.

Sammy Jordan- One of the nicest blokes you'll ever meet. Hopefully someone can find a cure to being made out of glass and we'll see Sammy on the pitch at some point this season. Previous clubs include Weymouth and Paulton Rovers.

Josh Ferguson- When Fergie is on song he is unstoppable, the most influential player at the club. Having a fit and firing Fergie available to us will make sure that we are competing in every match we play. Previous clubs include Frome Town and Bath City.

Mark Robinson- Experienced centre forward who knows his way around the penalty area, always seems to pop up with a goal when we need him to. Previous clubs include Devizes Town and Warminster Town.

Callum Demkiv- A great goal scorer, has finished as the teams top goal scorer in the last two seasons. Even if he's having a quiet game he will be a threat. Previous club Melksham Town.



Sponsor of James Peart

Westbury United Club History

The club started in 1920 when two local sides amalgamated. Westbury Old Comrades FC had just won promotion to the First Division of the Wiltshire County League and to strengthen the side they joined forces with a local junior side, Westbury Great Western Railway XI, and together they became Westbury United Football Club.

In its first season, the Club finished third from bottom of the County league and in the 1920's they struggled, but in the 1930's they won everything possible in Wiltshire football. In 1936 the Club reached the First Round Proper of the FA Cup. They were led by a magnificent player called Billy Pearce, who captained the County throughout the decade. Also included in the side at the time was a prolific goal scorer called Bill Butler, who scored more than eighty senior goals in one season (including thirty in a month!).

The Club purchased and moved to its present ground in Meadow Lane in 1934, the cost of the four-acre site being £475. The very first game played on what was then the Jubilee Playing Field was against Bristol City and a crowd of around 4000 attended. The Club has produced many players who have gone on to make the grade at professional football, two of them being centre forwards for Bristol City. The first was Reg Smith who played for City in the 1930s and was then transferred to Wolverhampton Wanderers for what was described in the Press as a 'considerable fee'. The other was John Atyeo, who for his signature City played a presentation game against Westbury and made a donation of £100. It must have been the bargain of the century as John played over 600 games for City and scored 359 goals. He also played six times for England in which he netted five goals. He died suddenly in June 1993, aged 61, and now has a grandstand named after him at City's Ashton Gate ground as well as a street in his home village of Dilton Marsh (just a few miles from Meadow Lane).

The Club has strong family traditions. Wilf Alford left Westbury before the last war to play for then First Division Portsmouth. His son, Phil, managed the Reserve Team for many years as well as stints helping at First Team level, while his grandsons have also played for the Club.

Westbury joined the Western League in 1984 and initially struggled. In 1988 floodlights were erected and Southampton were the visitors for the official switch on. Season 1988-89 saw the Club win its first honour in the League, winning the Sportsmanship Trophy. In 1991, under the management of Ian Harris, they won the First Division Title to gain promotion to the Premier Division. The highest League placing to date came in the 1994-95 season when they finished fifth.

The Club has had its share of dedicated officials who have given a lifetime of service. Former Club President, Ernie Barber, who passed away in December 2012, used to carry the team kit as a seven-year-old (1933) and after the war he started playing.

When he finished playing he became Secretary and held the post until the end of the 1996-97 season when he decided to retire.

In recent years the Club has, with the help of the Football Stadia Improvement Fund, been able to replace the drainage system on the pitch as well as erect fencing around the ground and a wall around the pitch.

Following several seasons in the 2000s where the aim of promotion to the Toolstation Premier League wasn't achieved, long standing manager Paul Brickley stood down and there was 6 seasons of struggle from 2010/11 till 2015/16 under various managers with the team finishing in the bottom 3 every time! There have been major changes behind the scenes with the aim of driving the Club forward. Although the team finished bottom of the league in 2014-2015 we were reprieved from relegation and made a minor improvement in 2015-2016. With the drive from those who joined the Club from the Westbury Youth set up there is a closer relationship between adult and youth football resulting in many teenagers stepping up to Western League football.

The 2015/16 season had a similar theme, Westbury were facing down the barrel of another relegation battle and another manager was relieved of his position. This change brought in the current father/son management team Neil and Joe Kirkpatrick, a strong finish to the season meant Westbury finished with a satisfactory 58 points and a 12th position finish.

A lot of hard work was put in off the pitch in preparation for the 2017/18 season. The wall surrounding the pitch was painted white, a new pay hut was erected, the clubhouse and changing rooms were refurbished. Also the team structure of the club had major changes, a 'new' reserve team was entered into the Wiltshire Senior League and the team competing in the Trowbridge and District League was renamed Westbury United Development team, complimented by a new U18's team at Westbury Youth there is finally a clear pathway for players to develop.

The Kirkpatrick's had attracted a strong group of players and Westbury started the season amongst the favourites to be promoted. They started the season well, staying unbeaten for the first 13 league games, winning 8 and drawing 5. Chairman Matt Bright stepped down in early October to spend more time with his family, and Secretary Greg Coulson was elected to become Chairman at a Special General Meeting in early November. The club won the First Division and secured promotion to the Premier Division.[1] They managed to score more points (95, previous best 91), score more goals (97, previous best 95) and concede the least goals (29, previous best 39) in the clubs history.

2018/19 was Westbury's first season back in the Toolstation Western Premier League since relegation in 2002, they finished fifth with another record points haul for the club.

The 2019/20 season was brought to a premature end due to the Covid-19 pandemic, the club took this opportunity to make changes in the management department, Lewis Porter and Ricky Hulbert took over to continue the great work that had been carried out by the Kirkpatrick's before them.



Sponsor of Reeko Best

