

MANTRA[™]

SPECIFICATIONS

June 2020

Supersedes all prior versions

SPEED. SERVICE. QUALITY.

MANTRA™

Your MANTRA™ user experience is our priority. The MANTRA Pricing and Specification Guide features hyperlink navigation, so you can quickly locate product specific to your project.

- The Indexes contain links to each unique product.
- The main Table of Contents contains links to the beginning of each section.
- The secondary Table of Contents at the beginning of each section contains links to product subcategories.
- Return to the beginning of each section by clicking on the title inside the black tab.
- Return to the main Table of Contents at any time by clicking on MANTRA™ Cabinets at the bottom of each page.

If your preferred PDF search method is holding the Control and F keys and populating the search box with item codes or words, we've got you covered.

No matter how you choose to use this resource, we're glad you're specifying MANTRA!

TABLE OF CONTENTS

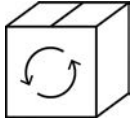
Index by Description	2
Index by Code	3
Customer Experience	4
How To Order Mantra	5
Door Styles	6-8
Product Specifications	9-14
Wall Cabinets	15-29
Base Cabinets	30-42
Universal Design Cabinets	43-50
Tall Cabinets	51-56
Vanity Cabinets	57-61
Fillers	62-64
Skins	65-66
Panels	67-68
Mouldings	69-75
Accessories	76-79
Hinges	80-82

Description	Code	Page	Description	Code	Page
Drawer Base	2DB	33	Full Overlay Hinge, 4-way	38BFOVHINGE	81
3 Drawer Base	3DB	34	Full Overlay Hinge, 6-way	38CFOHINGE	80
3" Filler	F3_ __, TF396	63	Hinge Angle Restriction Clip	HINGERESCLIP	81
6" Filler	F6_ __, TF696	64	Hinge Shim	HINGESHIM5	82
Accent Moulding, Flat Scribe	SM8	71	Mini Touch-up Kit	MTUK	79
Accent Moulding, Light Baffle	LB2	72	Partial Overlay Hinge	38NPOHINGE	80
Accent Moulding, Small Scribe	SSM8	72	Roll Tray Kits	RT_ __ WD	77
Angled Corner Sink Front	ACSF	38	Single Oven 3 Drawers	OC3D33_ _24	55
Angled Corner Sink Front Bottom	ACSFB	38	Sink Base	SB	36
Base and Tall Panels with Filler Attached	BEPF1.5LAM, BEPF3LAM, TEP2496F1.5, TEP3096F1.5	68	Starter Moulding, Shaker	STRS8	71
Base Built-in Microwave Cabinet with Drawer	BBMWD30	35	Straight Valance	VV_ __	75
Base Corner Single Door	BC_ __ S	40	Super Lazy Susan	SLS36R	41
Base Double Door	B	32	Tall End Panels	TEP2484LAM, TEP2496LAM, TEP3096LAM	67
Base Double Door - Full Height	B_ __ FH	33	Tilt-out Trays	TOT_ __	78
Base Easy Reach	BER36R	41	Toeboard	TB8LAM18, TB8LAM14	74
Base Lazy Susan	BLS36R	42	Universal Design, 3 Drawer Base	3DB_ __32.5	46
Base Single Door	B_ __ R	31	Universal Design, Base Corner Single Door	BC_ __32.5S	49
Base Single Door - Full Height	B_ __ FHR	32	Universal Design, Base Single Door	B_ __32.5R	44
Base Sink Removable	BSR	39	Universal Design, Base Sink Removable	BSR_ __32.5	48
Base Wastebasket	BWB	35	Universal Design, Sink Base	SB_ __32.5	47
Bumper Pads	BUMPERPADS	78	Universal Design, Super Lazy Susan	SLS3632.5R	50
Corner Moulding, Inside Corner	ICM8	73	Utility Double Door	U24_ __24	53
Corner Moulding, Outside Corner	OCM8	73	Utility Single Door	U18_ __24R	52
Corner Moulding, Quarter Round	QRM	74	Vanity Base Single Door	VB_ __32.521R	58
Country Sink Base	CNTYSB	37	Vanity Base Single Door	VB_ __3421R	59
Crown Moulding, Cove Crown	COVECROWN8	70	Vanity Drawer Base	VDB_ __32.521	58
Crown Moulding, Small Cove Crown	SMCOVECROWN8	70	Vanity Drawer Base	VDB_ __3421	60
Crown Moulding, Solid Wood Crown	SWCRM8	69	Vanity Sink Base	VS_ __32.521	59
Crown Moulding, Solid Wood Large Crown	SWLCRM8	69	Vanity Sink Base	VS_ __3421	60
Diagonal Wall	DW_ _ _ _ _ R	28	Vanity Sink Drawer Base	2VSD_ __3421	61
Drawer Guide Kits	DGK_ __ PG	79	Wall Double Door	W	16
End Panel Skins	WEPS42LAM14, BEPS34.514, TEPS96LAM14	65	Wall Corner Double Door	WC_ _ _ _ _ S	28
Finished Back Skins	BP4834.514, BP4896LAM14	65	Wall Corner Single Door	WC_ _ _ _ _ S	25
			Wall Single Door	W_ _ _ _ R	17

Code	Description	Page	Code	Description	Page
2DB	2 Drawer Base	33	OC3D33__24	Single Oven 3 Drawers	55
2VSD__3421	Vanity Sink Drawer Base	61	OCM8	Corner Moulding, Outside Corner	73
38CFOHINGE	Full Overlay Hinge, 6-way	80	QRM	Corner Moulding, Quarter Round	74
38BFOVHINGE	Full Overlay Hinge, 4-way	81	RT__WD	Roll Tray Kits	77
38NPOHINGE	Partial Overlay Hinge	80	SB	Sink Base	36
3DB	3 Drawer Base	34	SB__32.5	Universal Design, Sink Base	47
3DB__32.5	Universal Design, 3 Drawer Base	46	SLS3632.5R	Universal Design, Super Lazy Susan	50
ACSF	Angled Corner Sink Front	38	SLS36R	Super Lazy Susan	41
ACSFB	Angled Corner Sink Front Bottom	38	SM8	Accent Moulding, Flat Scribe	71
B	Base Double Door	32	SMCOVECROWN8	Crown Moulding, Small Cove Crown	70
B__FH	Base Double Door - Full Height	33	SSM8	Accent Moulding, Small Scribe	72
B__FHR	Base Single Door - Full Height	32	STRS8	Starter Moulding, Shaker	71
B__R	Base Single Door	31	SWCRM8	Crown Moulding, Solid Wood Crown	69
B__32.5R	Universal Design, Base Single Door	44	SWLCRM8	Crown Moulding, Solid Wood Large Crown	69
BC__S	Base Corner Single Door	40	TB8LAM14	Toeboard	74
BC__32.5S	Universal Design, Base Corner Single Door	49	TB8LAM18	Toeboard	74
BBMWD30	Base Built-in Microwave Cabinet with Drawer	35	TF396	3" Filler, Tall	63
BEPF1.5LAM	Base Panel with Filler Attached	68	TF696	6" Filler, Tall	64
BEPF3LAM	Base Panel with Filler Attached	68	TEP2484LAM	Tall End Panel	67
BEPS34.514	End Panel Skins	65	TEP2496F1.5	Tall Panels with Filler Attached	68
BER36R	Base Easy Reach	41	TEP2496LAM	Tall End Panels	67
BLS36R	Base Lazy Susan	42	TEP3096F1.5	Tall Panels with Filler Attached	68
BP4834.514	Finished Back Skins	65	TEP3096LAM	Tall End Panel	67
BP4896LAM14	Finished Back Skins	65	TEPS96LAM14	End Panel Skins	65
BSR	Base Sink Removable	39	TOT__	Tilt-out Trays	78
BSR__32.5	Universal Design, Base Sink Removable	48	U18__24R	Utility Single Door	52
BUMPERPADS	Bumper Pads	78	U24__24	Utility Double Door	53
BWB	Base Wastebasket	35	VB__32.521R	Vanity Base Single Door	58
CNTYSB	Country Sink Base	37	VB__3421R	Vanity Base Single Door	59
COVECROWN8	Crown Moulding, Cove Crown	70	VDB__32.521	Vanity Drawer Base	58
DGK__PG	Drawer Guide Kits	79	VDB__3421	Vanity Drawer Base	60
DW_____R	Diagonal Wall	28	VSF__32.521	Vanity Sink Base	59
F3__	3" Filler	63	VSF__3421	Vanity Sink Base	60
F6__	6" Filler	64	VV__	Straight Valance	75
HINGERESCLIP	Hinge Angle Restriction Clip	81	W	Wall Double Door	16
HINGESHIM5	Hinge Shim	82	W_____R	Wall Single Door	17
ICM8	Corner Moulding, Inside Corner	73	WC_____S	Wall Corner Double Door	28
LB2	Accent Moulding, Light Baffle	72	WC_____S	Wall Corner Single Door	25
MTUK	Mini Touch-up Kit	79	WEPS42LAM14	End Panel Skins	65

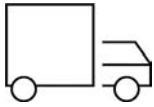
MANTRA™

CABINETS FAST



Cycle Ship

Orders are delivered based on a cycle ship calendar



Truckload

15 business day lead time delivered

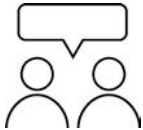
SERVICE MATTERS

As part of the MasterBrand family, we believe our industry leading service will set Mantra apart. This is our pledge to every partner.



Consistent Support

We will be there to help before, during and after the sale.



Personal Support

We will actually listen and work together to support your unique needs.



Proven Commitment

We will use our extensive knowledge and years of experience to help every partner success.

QUALITY ABOVE

We strive to deliver beyond your expectations. That's why popular features like all-plywood construction and soft-close come standard with every Mantra cabinet. Say goodbye to the hassle of upgrades and added costs for your customers.

MANTRA order

All orders are placed by your salesperson electronically using MBCI1Touch / Mantra Order:

- Electronic entry and order management
- 2020 Design direct order upload

Electronic orders are picked eight times daily, Monday through Friday (excluding holidays):

- 6:00, 7:30, 8:30, 9:30, and 10:30 AM EST
- 1:00, 2:30, and 3:30 PM EST

★ Order Acknowledgement will be sent the day after order receipt

★ Delivery notification will be sent to dealer once load is assigned

★ Shipments will be delivered Monday through Friday between the hours of 7:00 AM and 4:00 PM local time

- Your dealer will have an updated cycle ship calendar for each month.
- Ask your dealer for projected lead times.

- Mantra Cycle Ship cut off is 10:30 AM EST
- See Mantra Cycle Ship schedule on MBCI1Touch

Truckload orders ship in 10-15 business days.



CLASSIC

Partial Overlay • Shaker • 2 1/4" Rail • Slab drawer front



Bark
Style Code 320
Price Group 1



Snow
Style Code 321
Price Group 2



OMNI

Full Overlay • Shaker • 2 1/4" Rail • 5-piece drawer front



Bark
Style Code 322
Price Group 3



Snow
Style Code 323
Price Group 4



SPECTRA

Full Overlay • Transitional • 3" Rail • 5-piece drawer front

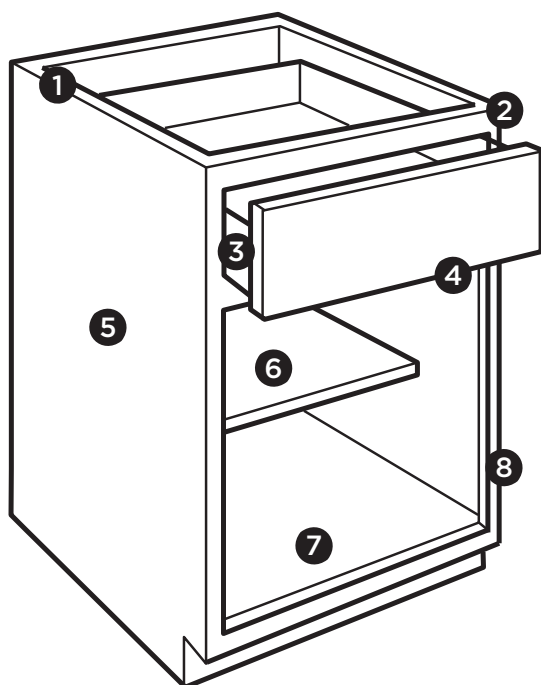


Mineral
Style Code 326
Price Group 6



Snow
Style Code 325
Price Group 6

PRODUCT SPECIFICATIONS









- 1 1/2" Plywood ends, 3/8" top, back, and bottom, and 3/8" I-beams
- 2 3/4" Hardwood frame, doors and drawer fronts
- 3 5/8" Solid wood dovetail drawer box
- 4 Soft-closing, undermount, full extension drawer guides
- 5 Matching exterior
- 6 3/4" natural plywood adjustable shelves
- 7 Natural interior
- 8 Soft-closing, 6-way adjustable hinges

Cabinet Care and Cleaning Instructions:

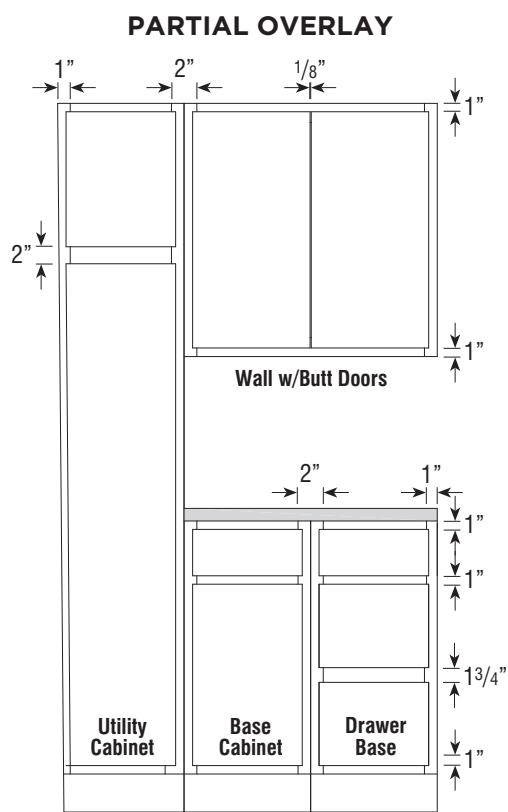
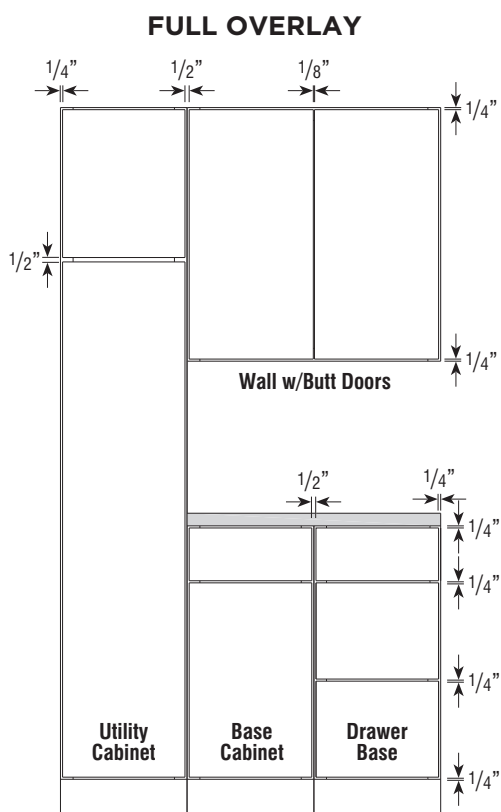
<https://www.masterbrand.com/care-and-cleaning>

For installation and warranty information, visit: mantracabinets.com

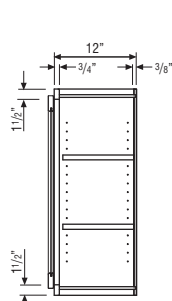
PRICE AND STYLE CODE INFORMATION

	1	2	3	4	6	
	Classic Stain	Classic Paint	Omni Stain	Omni Paint	Spectra Paint	Spectra Paint
	Bark	Snow	Bark	Snow	Snow	Mineral
						
Style Code	320	321	322	323	325	326
Common Style Code -Items with stain/paint price (Ex. Moulding)	310	311	310	311	311	312
Miscellaneous Code -Items with one price (Ex. Roll Trays)	300	300	300	300	300	300

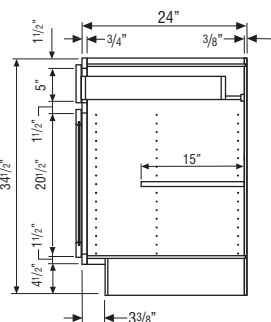
FULL AND PARTIAL OVERLAY SPECIFICATIONS



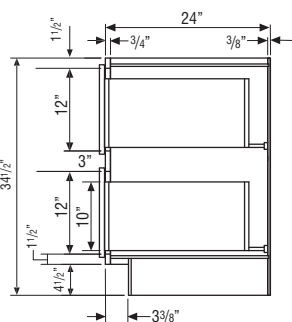
CABINET DIMENSIONS



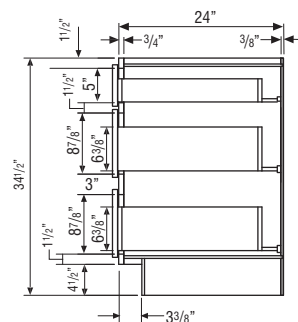
WALL CABINET



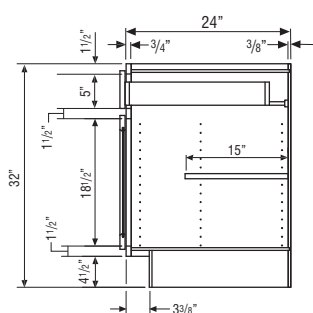
BASE CABINET



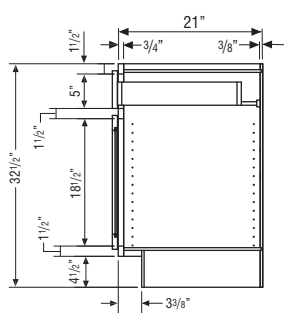
**TWO-DRAWER
BASE CABINET**



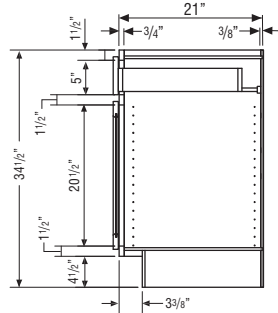
**THREE-DRAWER
BASE CABINET**



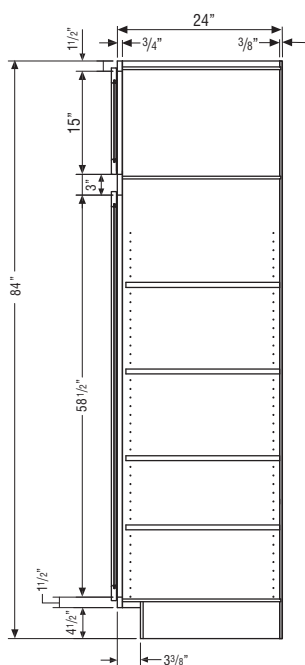
**32 1/2" HIGH
BASE CABINET**



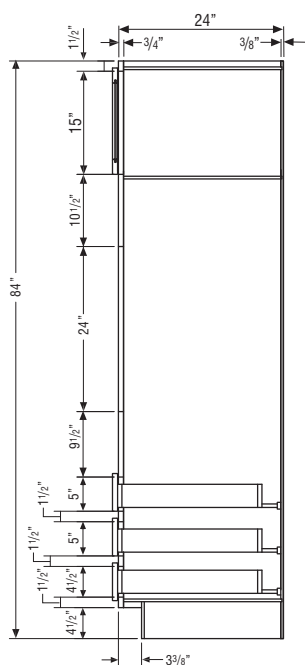
**32 1/2" HIGH
VANITY CABINET**



**34 1/2" HIGH
VANITY CABINET**



UTILITY CABINET

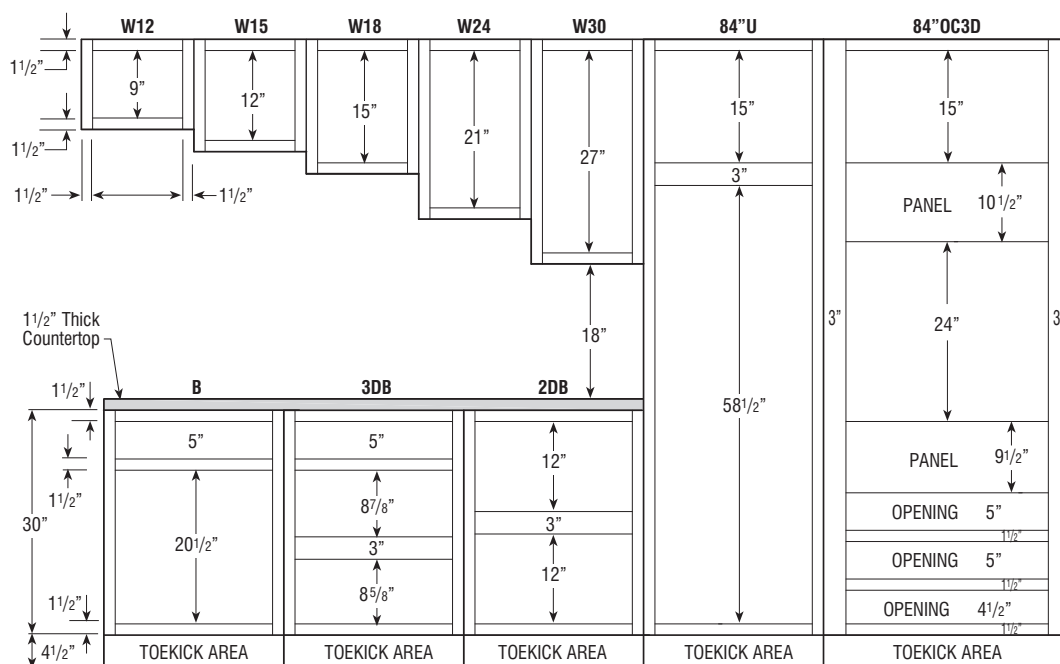


OC3D CABINET

CABINET DIMENSIONS

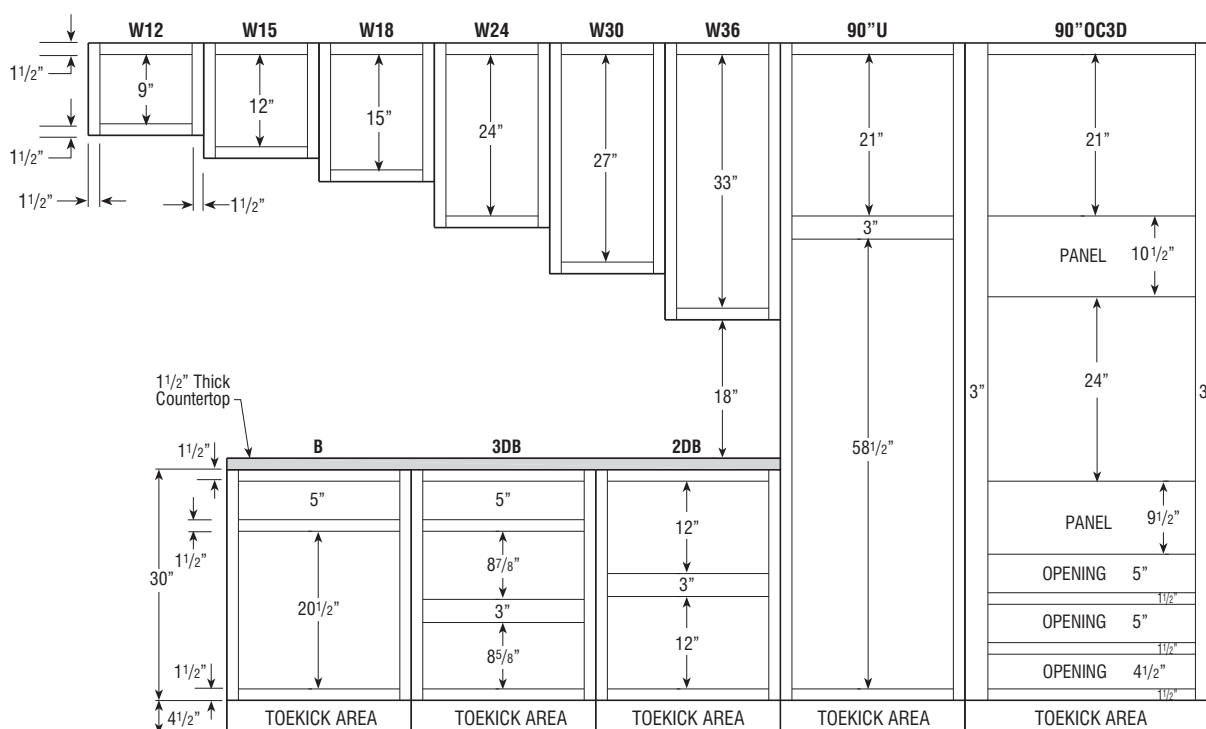
84" HIGH APPLICATION

Number after Wall Cabinet Represents Height of Cabinet



90" HIGH APPLICATION

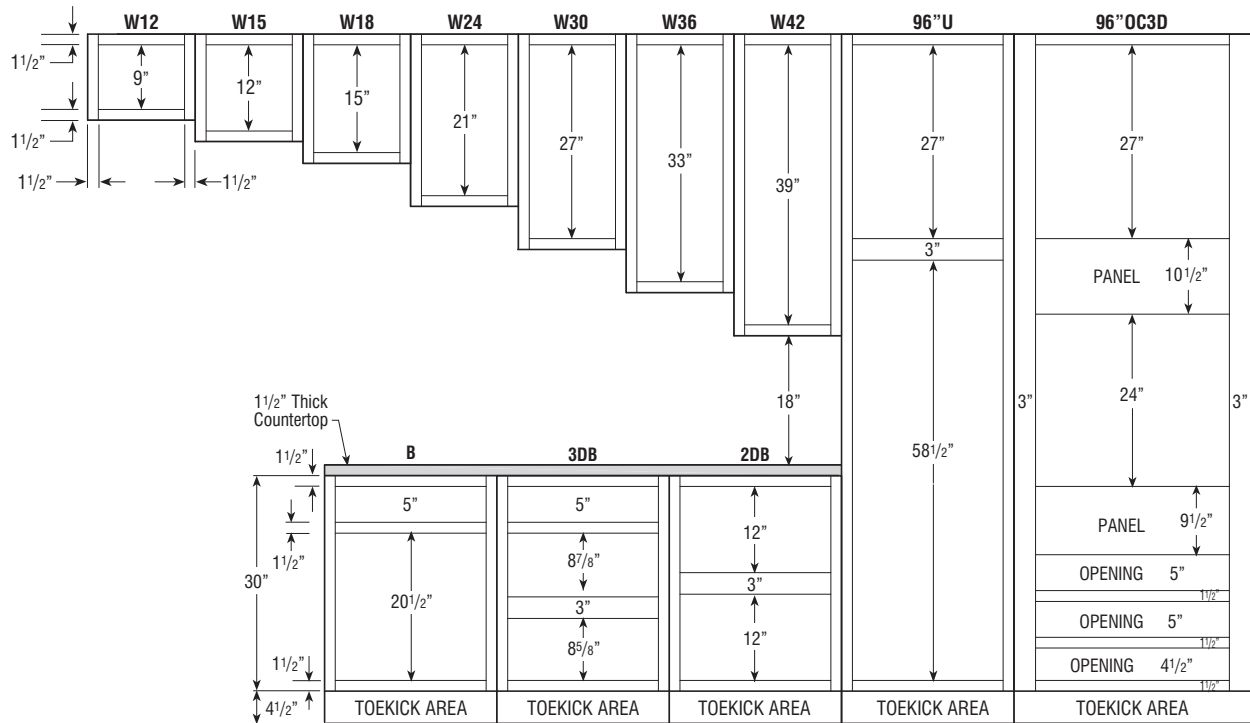
Number after Wall Cabinet Represents Height of Cabinet



CABINET DIMENSIONS

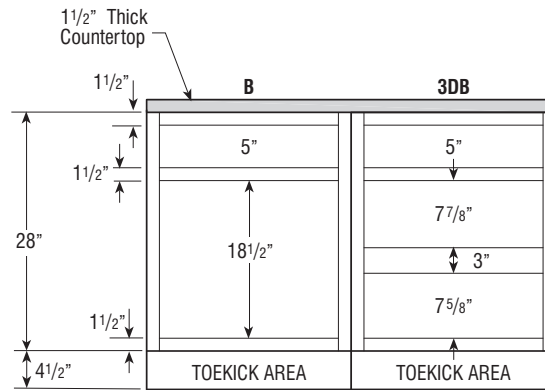
96" HIGH APPLICATION

Number after Wall Cabinet Represents Height of Cabinet

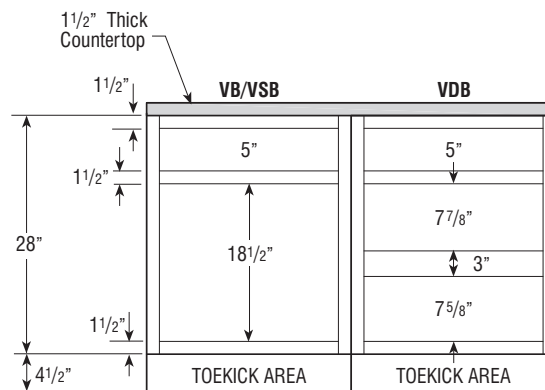


CABINET DIMENSIONS

32 1/2" HIGH BASE CABINETS



32 1/2" HIGH VANITY CABINETS



34 1/2" HIGH VANITY CABINETS

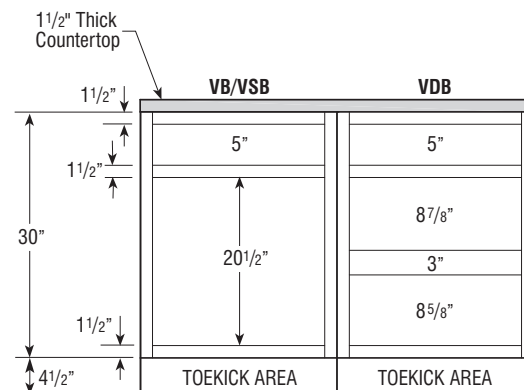


TABLE OF CONTENT - WALL CABINETS

**12" Deep Wall**

12" High	16
15" High	16
18" High	17
24" High	17
30" High	18
36" High	20
42" High	22

24" Deep Wall

12" High	23
18" High	24
24" High	24

12" Deep Wall Corner

30" High	25
36" High	26
42" High	27

12" Deep Diagonal Wall

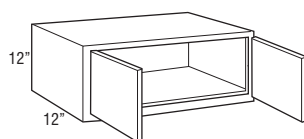
30" High	28
36" High	28
42" High	29

WALL DOUBLE DOOR

12" High

12" Deep

Model	Cubic Feet
W3012	3.4
W3312	3.7
W3612	4.0

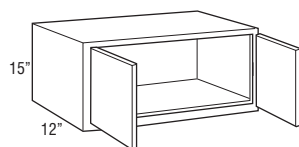


WALL DOUBLE DOOR

15" High

12" Deep

Model	Cubic Feet
W3015	3.9
W3315	4.2
W3615	4.6

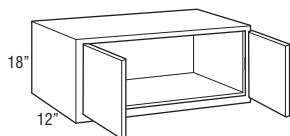


WALL DOUBLE DOOR

18" High

12" Deep

Model	Cubic Feet
W3018	4.9
W3318	5.3
W3618	5.8



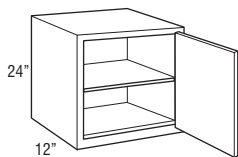
WALL SINGLE DOOR

24" High

12" Deep

Model	Cubic Feet
W2124R	4.6

- Cabinet hinged on the right; may be flipped for left hinge application.

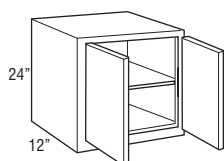


WALL DOUBLE DOOR

24" High

12" Deep

Model	Cubic Feet
W2424	5.2
W3024	6.4
W3324	7.0
W3624	7.6



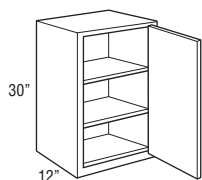
WALL SINGLE DOOR

30" High

12" Deep

Model	Cubic Feet
W930R	2.6
W1230R	3.4
W1530R	4.1
W1830R	4.9
W2130R	5.6

- Cabinet hinged on the right; may be flipped for left hinge application.

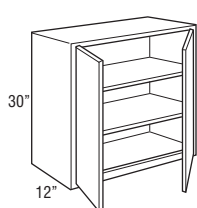
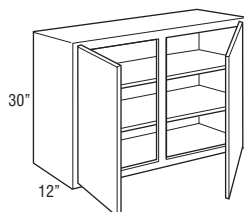


WALL DOUBLE DOOR

30" High

12" Deep

Model	Cubic Feet
W2430	6.4
W2730	7.2
W3030	7.9
W3330	8.7
W3630	9.4
W4230	11.0

**W2430-W3630****W4230**

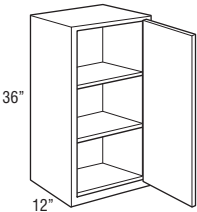
WALL SINGLE DOOR

36" High

12" Deep

Model	Cubic Feet
W936R	3.1
W1236R	4.0
W1536R	4.9
W1836R	5.8
W2136R	6.7

- Cabinet hinged on the right; may be flipped for left hinge application.

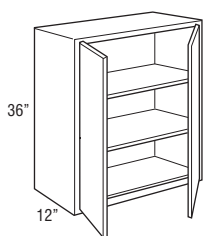
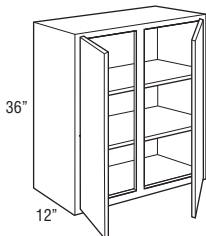


WALL DOUBLE DOOR

36" High

12" Deep

Model	Cubic Feet
W2436	7.6
W2736	8.5
W3036	9.4
W3336	10.3
W3636	11.2
W4236	13.1

**W2436-W3636****W4236**

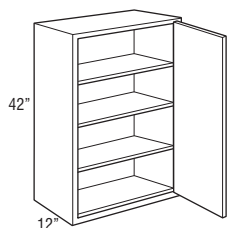
WALL SINGLE DOOR

42" High

12" Deep

Model	Cubic Feet
W942R	3.6
W1242R	4.6
W1542R	5.7
W1842R	6.7
W2142R	7.8

- Cabinet hinged on the right; may be flipped for left hinge application.

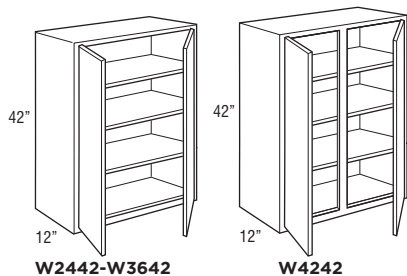


WALL DOUBLE DOOR

42" High

12" Deep

Model	Cubic Feet
W2442	8.8
W2742	9.9
W3042	11.0
W3342	12.0
W3642	13.1
W4242	15.2



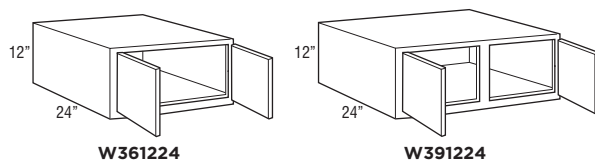
WALL DOUBLE DOOR

12" High

24" Deep

Model	Cubic Feet
W361224	7.4
W391224	7.9

- 24" deep cabinets must be supported on three surfaces when mounted.
- Load limit is 15 lbs. per square foot of load bearing surface.



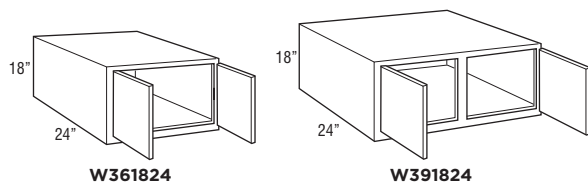
WALL DOUBLE DOOR

18" High

24" Deep

Model	Cubic Feet
W361824	10.7
W391824	11.5

- 24" deep cabinets must be supported on three surfaces when mounted.
- Load limit is 15 lbs. per square foot of load bearing surface.



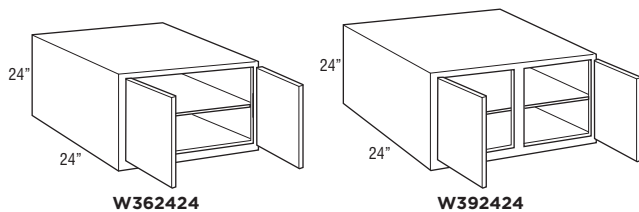
WALL DOUBLE DOOR

24" High

24" Deep

Model	Cubic Feet
W362424	14.0
W392424	15.1

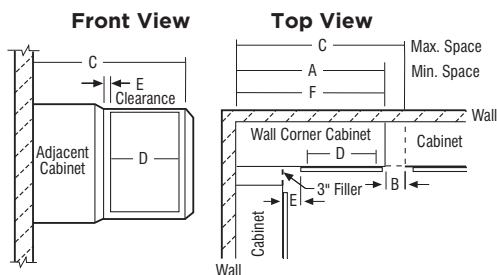
- 24" deep cabinets must be supported on three surfaces when mounted.
- Load limit is 15 lbs. per square foot of load bearing surface.



WALL CORNER CABINETS

SKU	A Min. Space	B Max. Pull	C Max. Space	D Cabinet Opening	E Full Overlay		E Partial Overlay		F Actual Cabinet
WC30...	30"	5"	35"	13 1/2"	At Min.	At Max.	At Min.	At Max.	30"
WC36...	36"	5"	41"	19 1/2"	1 3/4"	6 3/4"	2 1/2"	7 1/2"	36"
WC42...	42"	4 1/2"	46 1/2"	24"	3 1/4"	7 3/4"	4"	8 1/2"	42"

- Wall corner cabinets may be installed flush to the wall (left) or pulled 3" away from wall (right) to accommodate add dimensions in a kitchen design. In either case, the adjoining run of 12" wall cabinets plus a 3" filler will butt against the solid-wood panel.
- When a cabinet is "pulled" it will use proportionally more space, for example, a 30" wide WC, pulled 2" will use 32" of space.
- Blind side of wall corner cabinets cannot be installed next to a range hood unit due to door interference.



NOTE:
All outside stiles are 1 1/2" wide

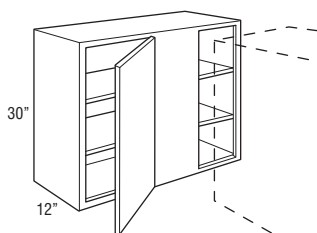
WALL CORNER SINGLE DOOR

30" High

12" Deep

Model	Cubic Feet
WC3030S	7.9
WC3630S	9.4

- Right blind shown; cabinet may be flipped for left blind application.
- Filler required for installation. Must be ordered separately.



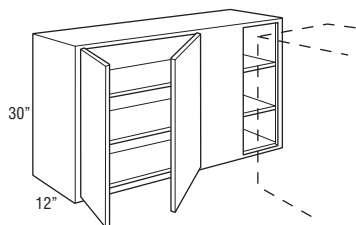
WALL CORNER DOUBLE DOOR

30" High

12" Deep

Model	Cubic Feet
WC4230S	11.0

- Right blind shown; cabinet may be flipped for left blind application.
- Filler required for installation. Must be ordered separately.



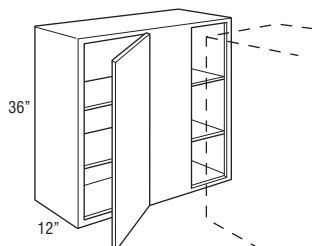
WALL CORNER SINGLE DOOR

36" High

12" Deep

Model	Cubic Feet
WC3036S	9.4
WC3636S	11.2

- Right blind shown; cabinet may be flipped for left blind application.
- Filler required for installation. Must be ordered separately.



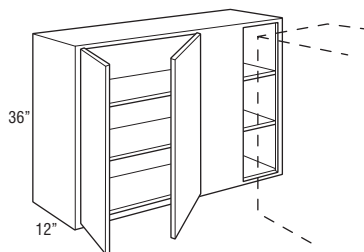
WALL CORNER DOUBLE DOOR

36" High

12" Deep

Model	Cubic Feet
WC4236S	13.1

- Right blind shown; cabinet may be flipped for left blind application.
- Filler required for installation. Must be ordered separately.



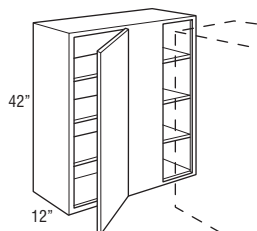
WALL CORNER SINGLE DOOR

42" High

12" Deep

Model	Cubic Feet
WC3042S	11.0
WC3642S	13.1

- Right blind shown; cabinet may be flipped for left blind application.
- Filler required for installation. Must be ordered separately.



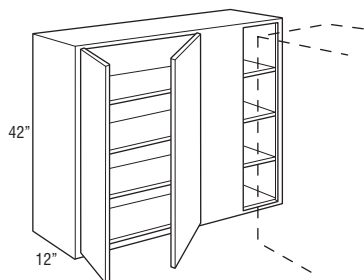
WALL CORNER DOUBLE DOOR

42" High

12" Deep

Model	Cubic Feet
WC4242S	15.2

- Right blind shown; cabinet may be flipped for left blind application.
- Filler required for installation. Must be ordered separately.



DIAGONAL WALL

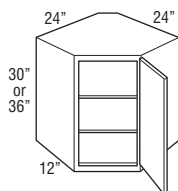
30" High

36" High

12" Deep

Model	Cubic Feet
DW302424R	10.8
DW362424R	12.9

- Cabinet hinged on the right; may be flipped for left hinge application.
- Cabinets require 24" x 24" of corner wall space.



DIAGONAL WALL

42" High

12" Deep

Model	Cubic Feet
DW422424R	14.9

- Cabinet hinged on the right; may be flipped for left hinge application.
- Cabinets require 24" x 24" of corner wall space.

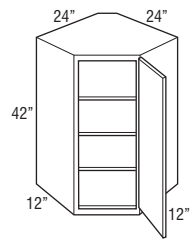
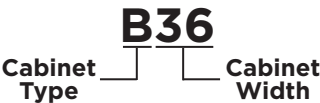


TABLE OF CONTENTS – BASE CABINETS



34 1/2" High, 24" Deep

Base with Drawer31

Full Height Base32

Drawer Base33

Base Built-in Microwave Cabinet with Drawer35

Base Wastebasket35

Sink Base36

Base Sink Removable39

Base Corner40

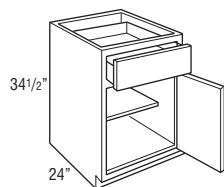
BASE SINGLE DOOR

34½" High

24" Deep

Model	Cubic Feet
B9R	5.4
B12R	7.1
B15R	8.7
B18R	10.3
B21R	11.7

- Cabinet hinged on the right; door may be flipped for left hinge application.
- Roll tray kits available for 15"-21" widths.



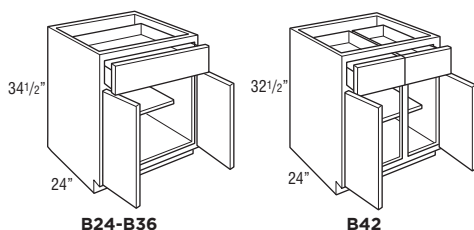
BASE DOUBLE DOOR

34½" High

24" Deep

Model	Cubic Feet
B24	13.3
B27	14.9
B30	16.5
B33	18.1
B36	19.6
B42	22.8

- Roll tray kits available for 24"-42" widths.



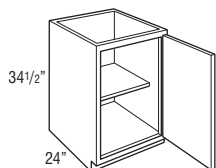
FULL HEIGHT BASE SINGLE DOOR

34½" High

24" Deep

Model	Cubic Feet
B15FHR	8.5
B18FHR	10.1
B21FHR	11.7

- Cabinet hinged on the right; door may be flipped for left hinge application.
- Roll tray kits available for 15"-21" widths.



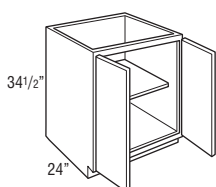
FULL HEIGHT BASE DOUBLE DOOR

34½" High

24" Deep

Model	Cubic Feet
B24FH	13.3
B30FH	16.5
B36FH	19.6

- Roll tray kits available for 24"-36" widths.



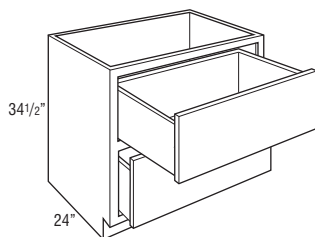
2 DRAWER BASE

34½" High

24" Deep

Model	Cubic Feet
2DB30	16.5
2DB36	19.6

- On door styles with slab drawer fronts, all drawer fronts will be slab.



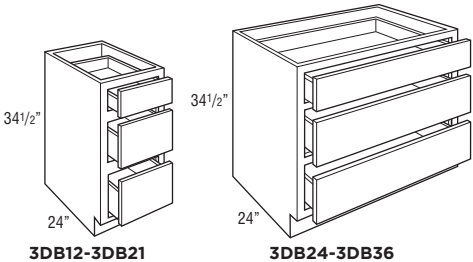
3 DRAWER BASE

34½" High

24" Deep

Model	Cubic Feet
3DB12	7.0
3DB15	8.5
3DB18	10.1
3DB21	11.7
3DB24	13.3
3DB30	16.5
3DB36	19.6

• On door styles with slab drawer fronts, all drawer fronts will be slab.



New

BASE BUILT-IN MICROWAVE CABINET WITH DRAWER

34½" High

24" Deep

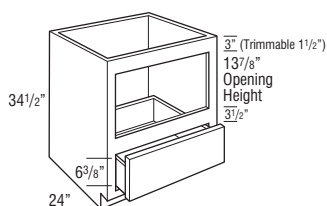
Model

Cubic Feet

BBMWD30

16.1

- Natural interior finish
- For built-in appliance support, OCINSTALLKIT is included
- For finished interior, consider field application of BP4834.514 (to cover interior sides, back, and field supplied floor)
- The usable cabinet face height between top of drawer front and top of cabinet is 19 1/8" for partial overlay and 19 3/4" for full overlay. Be sure to verify overall appliance height, gap requirements, and cut-out dimensions with cabinet specifications.



Model	Opening Width	Maximum Width	Opening Height	Maximum Height
BBMWD30	27"	28 1/2"	13 7/8"	16 7/8"

BASE WASTEBASKET

34½" High

24" Deep

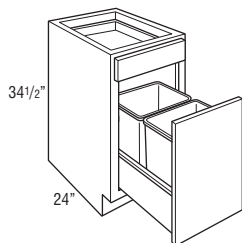
Model

Cubic Feet

BWB18

10.3

- Pull-out features undermount full extension, soft-close guides.
- Includes two 35 quart gray wastebaskets.



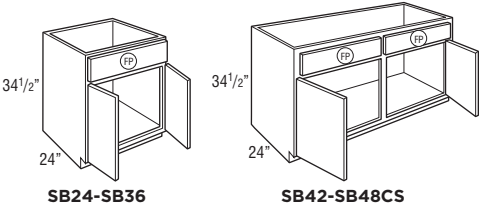
SINK BASE

34½" High

24" Deep

Model	Cubic Feet
SB24	13.3
SB27	14.9
SB30	16.5
SB33	18.1
SB36	19.6
SB42	22.8
SB48CS	26.0

- Mini Touch-Up Kit (MTUK) included. MTUK includes small touch-up marker and small fill stick.
- Tilt-out tray kits available.



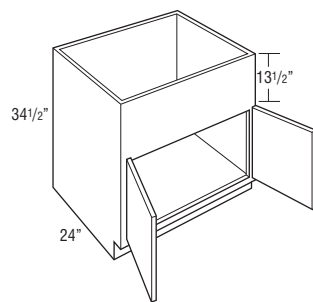
COUNTRY SINK BASE

34 1/2" High

24" Deep

Model	Cubic Feet
CNTYSB36	19.6

- 13 1/2" panel can be trimmed up to 12".
- Mini Touch-Up Kit (MTUK) included. MTUK includes small touch-up marker and small fill stick.
- Refer to manufacturer's recommendations for additional support required for apron front sinks.



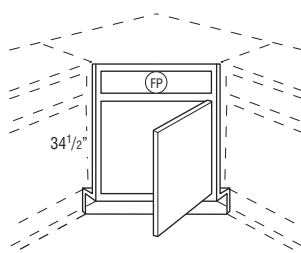
ANGLED CORNER SINK FRONT

34 1/2" High

Model	Cubic Feet
ACSF36R	2.9
ACSF42*	3.9

- Frame edges beveled at 45°.
- Toekick and toekick retainer shipped unattached from the face frame.
- Sink base floor not included.

*ACSF42 has butt doors.



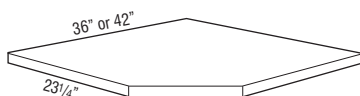
Max. Sink Widths if cut-out is 4" back from face of front frame

Wall Width	Frame	Maximum Sink Width	Maximum Sink Depth
36" x 36"	17"	25 3/4"	27 11/32"
42" x 42"	25 1/2"	34 1/4"	27 11/32"

ANGLED CORNER SINK FRONT BOTTOM

Model	Cubic Feet
ACSFB36	1.0
ACSFB42	1.0

- Designed for use with Angled Corner Sink Front.
- 3/4" thick.
- 1-side laminated plywood.



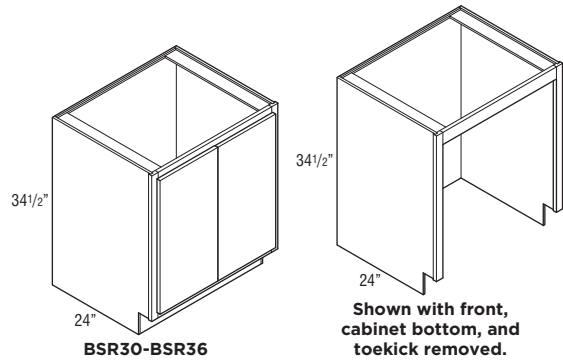
BASE SINK REMOVABLE

34½" High

24" Deep

Model	Cubic Feet
BSR30	13.7
BSR36	16.4

- Cabinet must supported on both sides. Not intended for end of run.
- Front, cabinet bottom, and toekick are removable.
- Mini Touch-Up Kit (MTUK) included. MTUK includes small touch-up marker and small fill stick.
- Available in Classic Bark & Omni Snow.



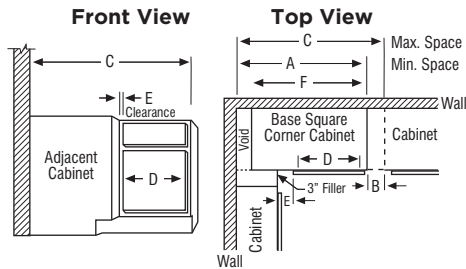
BASE CORNER CABINETS

SKU	A Min. Space	B Max. Pull	C Max. Space	D Cabinet Opening	E Full Overlay		E Partial Overlay		F Actual Cabinet
BC36S	36"	6"	42"	7 1/2"	At Min.	At Max.	At Min.	At Max.	27"
BC42S	42"	6"	48"	13 1/2"	1 3/4"	7 3/4"	2 1/2"	8 1/2"	39"
BC48S	48"	3"	51"	16 1/2"	4 3/4"	7 3/4"	5 1/2"	8 1/2"	45"

- BCs use the wall space the nomenclature implies and may be pulled up to 3" to accommodate odd dimensions in a kitchen.
- Remember to use 3" filler on adjoining cabinets.
- The adjoining run of cabinets will cover the void.

NOTE:

Full overlay styles must be pulled an additional 1 1/2" to ensure proper drawer/pull clearance. 1 1/2" pull is not included in minimum and maximum list.



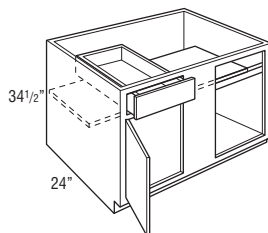
BASE CORNER SINGLE DOOR

34 1/2" High

24" Deep

Model	Cubic Feet
BC36S	15.0
BC42S	21.3
BC48S	24.5

- Right blind shown; door and drawer can be reversed for left blind application.
- Filler required for installation. Must be ordered separately.



BASE EASY REACH

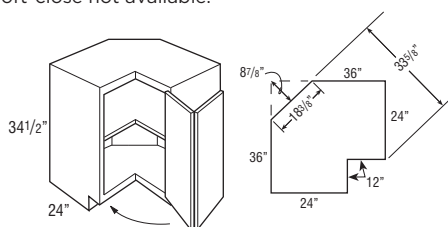
34 1/2" High

24" Deep

Model	Cubic Feet
-------	------------

BER36R	29.1
--------	------

- Wall width is 36" x 36".
- Decorative hardware screws must be countersunk to prevent scratching of adjacent cabinets and face frame of BER.
- Not recommended for use next to an appliance deeper than standard cabinet depth.
- Soft-close not available.



Due to the fixed shelves mounting shelves cannot be retrofitted.

SUPER LAZY SUSAN

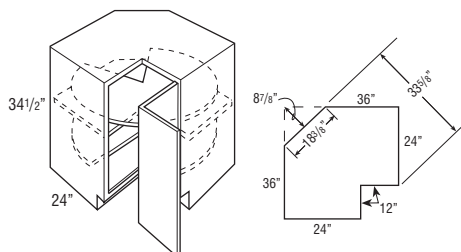
34 1/2" High

24" Deep

Model	Cubic Feet
-------	------------

SLS36R	29.1
--------	------

- Wall width is 36" x 36".
- Features two plywood revolving shelves. Lower shelf is mounted to floor. Upper shelf is mounted to fixed shelf.
- Decorative hardware screws must be countersunk to prevent scratching adjacent cabinets and face frame of SLS.
- Not recommended for use next to an appliance deeper than standard cabinet depth.
- Soft-close not available.



Due to the fixed shelves mounting shelves cannot be retrofitted.

BASE LAZY SUSAN

34½" High

24" Deep

Model	Cubic Feet
BLS36R	20.4

- Wall width is 36" x 36".
- Cabinet is drum-shaped; adjoining cabinets create sides.
- Features two white plastic shelves.
- Decorative hardware screws must be countersunk to prevent scratching of adjacent cabinets and face frame of BLS.
- Not recommended for use next to an appliance deeper than standard cabinet depth.
- Soft-close not available.

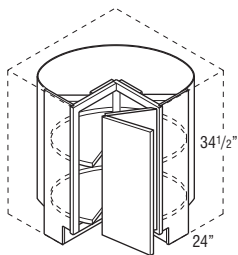
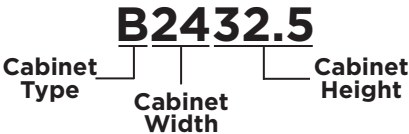


TABLE OF CONTENTS - UNIVERSAL DESIGN CABINETS



32 1/2" High, 24" Deep

Universal Design Base44

Universal Design Drawer Base46

Universal Design Sink Base47

Universal Design Base Sink Removable48

Universal Design Base Corner49

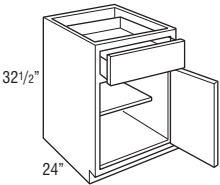
UNIVERSAL DESIGN, BASE SINGLE DOOR

32½" High

24" Deep

Model	Cubic Feet
B932.5R	5.0
B1232.5R	6.5
B1532.5R	8.0
B1832.5R	9.4
B2132.5R	10.9

- Cabinet hinged on the right; door may be flipped for left hinge application.
- Roll tray kits available for 15"-21" widths.
- Available on Classic Bark & Omni Snow.



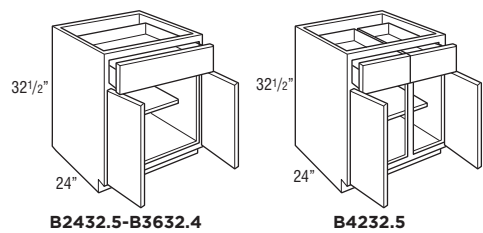
UNIVERSAL DESIGN, BASE DOUBLE DOOR

32½" High

24" Deep

Model	Cubic Feet
B2432.5	12.4
B2732.5	13.8
B3032.5	15.3
B3332.5	16.8
B3632.5	18.3
B4232.5	21.2

- Roll tray kits available for 24"-42" widths.
- Available on Classic Bark & Omni Snow.



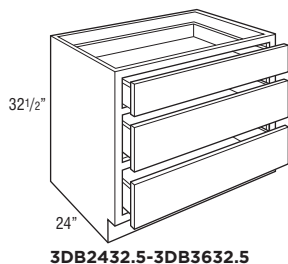
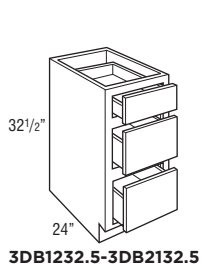
UNIVERSAL DESIGN, 3 DRAWER BASE

32 $\frac{1}{2}$ " High

24" Deep

Model	Cubic Feet
3DB1232.5	6.3
3DB1532.5	8.0
3DB1832.5	9.4
3DB2132.5	10.9
3DB2432.5	12.4
3DB3032.5	16.5
3DB3632.5	19.6

- On door styles with slab drawer fronts, all drawer fronts will be slab.
- Available on Classic Bark & Omni Snow.



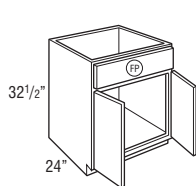
UNIVERSAL DESIGN, SINK BASE

32½" High

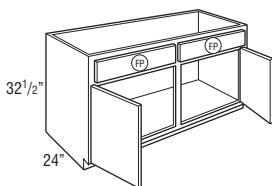
24" Deep

Model	Cubic Feet
SB2432.5	12.6
SB2732.5	14.1
SB3032.5	15.3
SB3332.5	17.1
SB3632.5	18.6
SB4232.5	21.6
SB4832.5CS	24.6

- Mini Touch-Up Kit (MTUK) included. MTUK includes small touch-up marker and small fill stick.
- Tilt-out tray kits available.
- Available on Classic Bark & Omni Snow.



SB2432.5-SB3632.5



SB4232.5-SB4832.5CS

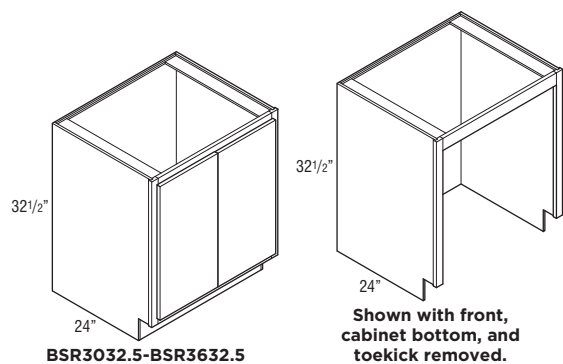
UNIVERSAL DESIGN, BASE SINK REMOVABLE

32 1/2" High

24" Deep

Model	Cubic Feet
BSR3032.5	13.7
BSR3632.5	16.4

- Cabinet must supported on both sides. Not intended for end of run.
- Front, cabinet bottom, and toekick are removable.
- Mini Touch-Up Kit (MTUK) included. MTUK includes small touch-up marker and small fill stick.
- Available in Classic Bark & Omni Snow



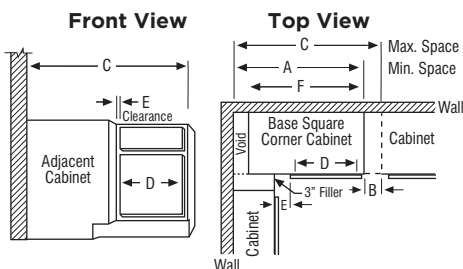
UNIVERSAL DESIGN CORNER CABINETS

SKU	A Min. Space	B Max. Pull	C Max. Space	D Cabinet Opening	E Full Overlay At Min. At Max.		E Partial Overlay At Min. At Max.		F Actual Cabinet
BC3632.5S	32"	6"	42"	7 1/2"	1 3/4"	7 3/4"	2 1/2"	8 1/2"	27"
BC4232.5S	42"	6"	48"	13 1/2"	1 3/4"	7 3/4"	2 1/2"	8 1/2"	39"
BC4832.5S	48"	3"	51"	16 1/2"	4 3/4"	7 3/4"	5 1/2"	8 1/2"	45"

- BCs use the wall space the nomenclature implies and may be pulled up to 3" to accommodate odd dimensions in a kitchen.
- Remember to use 3" filler on adjoining cabinets.
- The adjoining run of cabinets will cover the void.

NOTE:

Full overlay styles must be pulled an additional 1 1/2" to ensure proper drawer/pull clearance. 1 1/2" pull is not included in minimum and maximum list.



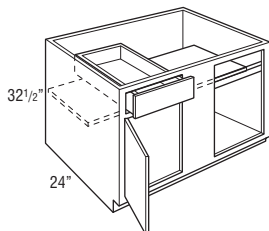
UNIVERSAL DESIGN, BASE CORNER SINGLE DOOR

32 1/2" High

24" Deep

Model	Cubic Feet
BC3632.5S	14.1
BC4232.5S	18.3
BC4832.5S	22.7

- Right blind shown; door and drawer can be reversed for left blind application.
- Filler required for installation. Must be ordered separately.
- Available on Classic Bark & Omni Snow.



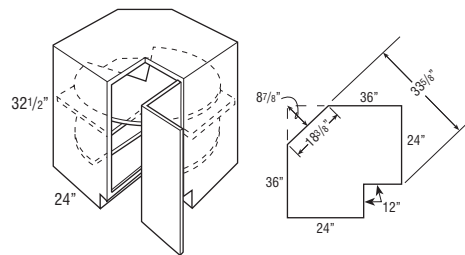
UNIVERSAL DESIGN, SUPER LAZY SUSAN

32 1/2" High

24" Deep

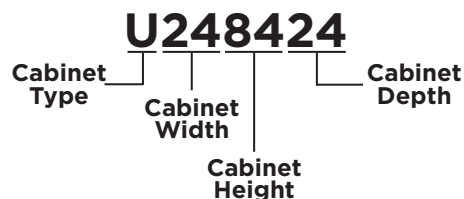
Model	Cubic Feet
SLS3632.5R	18.4

- Wall width is 36" x 36".
- Features two plywood revolving shelves. Lower shelf is mounted to floor. Upper shelf is mounted to fixed shelf.
- Decorative hardware screws must be countersunk to prevent scratching adjacent cabinets and face frame of SLS.
- Not recommended for use next to an appliance deeper than standard cabinet depth.
- Soft-close not available.
- Available on Classic Bark & Omni Snow.



Due to the fixed shelves mounting shelves cannot be retrofitted.

TABLE OF CONTENTS – TALL CABINETS

**24" Deep Utility Single Door**

84" High	52
90" High	52
96" High	53

24" Deep Utility Double Door

84" High	53
90" High	54
96" High	54

24" Deep Single Oven 3 Drawers

84" High	55
90" High	55
96" High	56

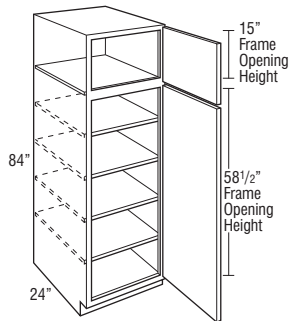
UTILITY SINGLE DOOR

84" High

24" Deep

Model	Cubic Feet
U188424R	23.4

- Roll tray kits available.



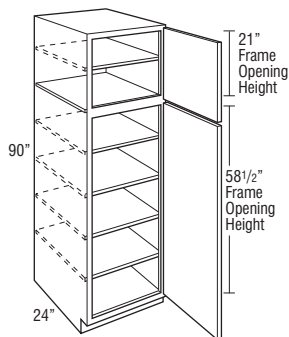
UTILITY SINGLE DOOR

90" High

24" Deep

Model	Cubic Feet
U189024R	25.4

- Roll tray kits available.



UTILITY SINGLE DOOR

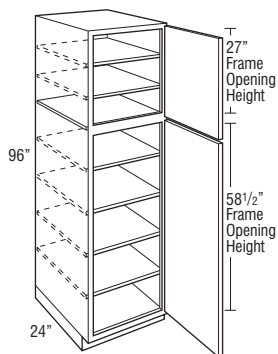
96" High

24" Deep

Model	Cubic Feet
-------	------------

U189624R	27.0
----------	------

- Separate pedestal base included on 96" tall.
- Roll tray kits available.



UTILITY DOUBLE DOOR

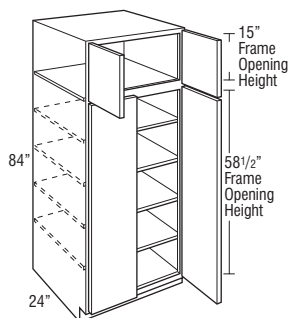
84" High

24" Deep

Model	Cubic Feet
-------	------------

U248424	30.9
---------	------

- Roll tray kits available.



UTILITY DOUBLE DOOR

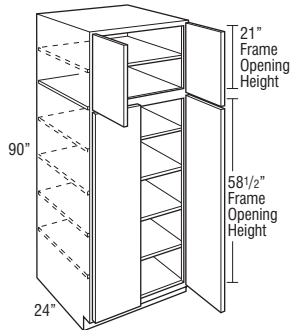
90" High

24" Deep

Model	Cubic Feet
-------	------------

U249024	33.4
---------	------

- Roll tray kits available.



UTILITY DOUBLE DOOR

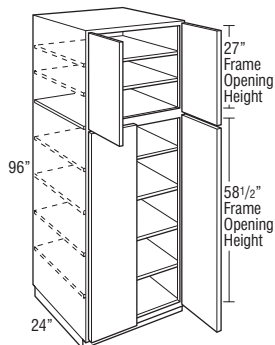
96" High

24" Deep

Model	Cubic Feet
-------	------------

U249624	35.6
---------	------

- Separate pedestal base included on 96" tall.
- Roll tray kits available.



SINGLE OVEN 3 DRAWERS

84" High

24" Deep

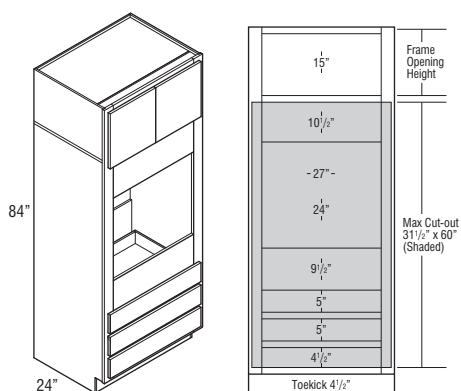
Model

Cubic Feet

OC3D338424

47.7

- Oven cabinets feature an open back in cut-out area designed to improve field appliance installation.
- Metal appliance support brackets included for 24" deep cabinets.
- Confirm a heat shield is built into your appliance by the manufacturer.



SINGLE OVEN 3 DRAWERS

90" High

24" Deep

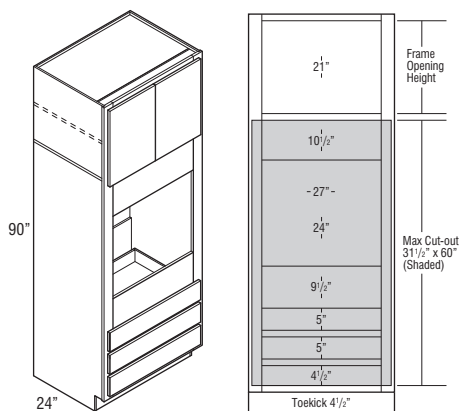
Model

Cubic Feet

OC3D339024

51.0

- Oven cabinets feature an open back in cut-out area designed to improve field appliance installation.
- Metal appliance support brackets included for 24" deep cabinets.
- Confirm a heat shield is built into your appliance by the manufacturer.



SINGLE OVEN 3 DRAWERS

96" High

24" Deep

Model	Cubic Feet
-------	------------

OC3D339624	54.3
------------	------

- Oven cabinets feature an open back in cut-out area designed to improve field appliance installation.
- Metal appliance support brackets included for 24" deep cabinets.
- Separate pedestal base included on 96" tall.
- Confirm a heat shield is built into your appliance by the manufacturer.

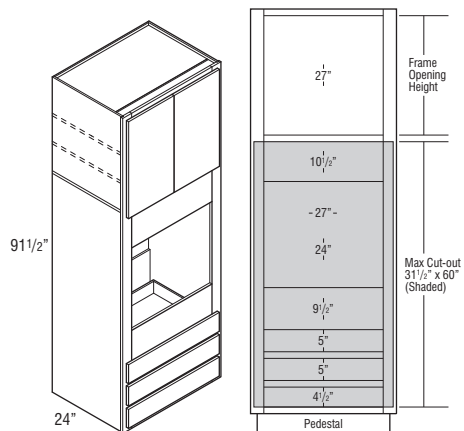
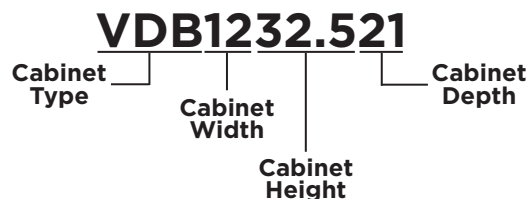


TABLE OF CONTENTS - VANITY CABINETS



32 1/2" High, 21" Deep

Vanity Base with Drawer	58
Vanity Drawer Base	58
Vanity Sink Base	59

34 1/2" High, 21" Deep

Vanity Base	59
Vanity Drawer Base	60
Vanity Sink Base	60
Vanity Sink Drawer Base	61

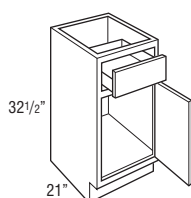
VANITY BASE SINGLE DOOR

32½" High

21" Deep

Model	Cubic Feet
VB1232.521R	5.7
VB1532.521R	7.1
VB1832.521R	8.4

- Cabinet hinged on the right; door may be flipped for left hinge application.



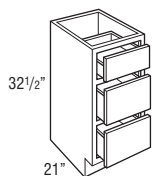
VANITY DRAWER BASE

32½" High

21" Deep

Model	Cubic Feet
VDB1232.521	5.7
VDB1532.521	7.1
VDB1832.521	8.4

- On door styles with slab drawer fronts, all drawer fronts will be slab.



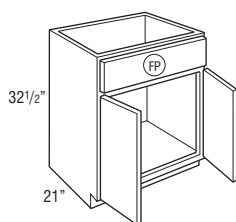
VANITY SINK BASE

32½" High

21" Deep

Model	Cubic Feet
VSB2432.521	11.0
VSB3032.521	13.7
VSB3632.521	16.3

- Tilt-out tray kits available.



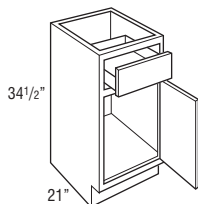
VANITY BASE SINGLE DOOR

34½" High

21" Deep

Model	Cubic Feet
VB123421R	6.2
VB153421R	7.6
VB183421R	9.0

- Cabinet hinged on the right; door may be flipped for left hinge application.



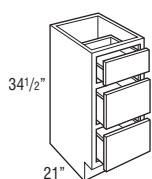
VANITY DRAWER BASE

34½" High

21" Deep

Model	Cubic Feet
VDB123421	6.2
VDB153421	7.6
VDB183421	8.9

- On door styles with slab drawer fronts, all drawer fronts will be slab.



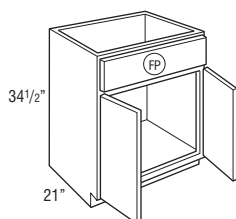
VANITY SINK BASE

34½" High

21" Deep

Model	Cubic Feet
VSB243421	11.9
VSB303421	14.7
VSB363421	17.5

- Tilt-out tray kits available.



VANITY SINK DRAWER BASE

34 1/2" High

21" Deep

Model	Cubic Feet
2VSD363421	17.4
2VSD423421	20.3
2VSD483421CS	23.1

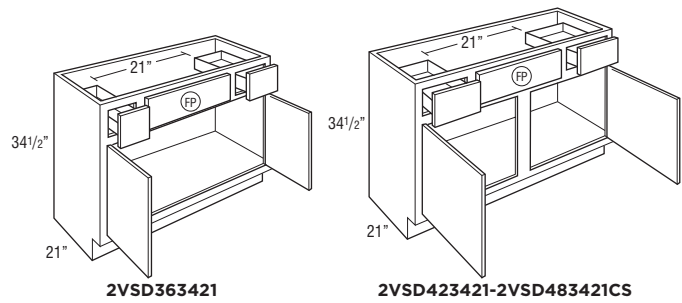


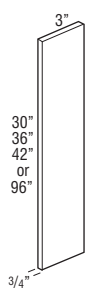
TABLE OF CONTENTS – FILLERS, SKINS, PANELS, & MOULDING

Fillers	63
Skins	65
Panels	67
Crown Moulding	69
Starter Moulding	71
Accent Moulding	71
Corner Moulding	73
Toeboard	74
Straight Valance / Baseboard	75

3" FILLER

Model	Cubic Feet
F330	0.2
F336	0.2
F342	0.2
TF396FH	0.5

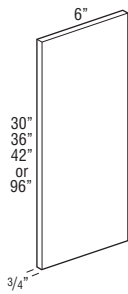
- 3/4" thick.
- Finished on front and two long edges (backs are not finished).



6" FILLER

Model	Cubic Feet
F630	0.2
F636	0.2
F642	0.2
TF696FH	0.5

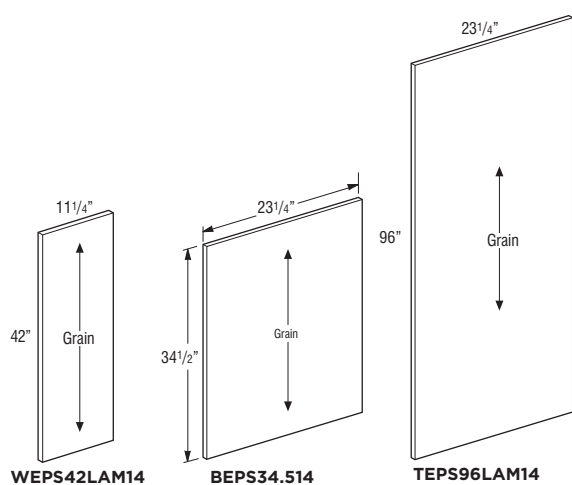
- 3/4" thick.
- Finished on front and two long edges (backs are not finished).



END PANEL SKINS

Model	Cubic Feet
WEPS42LAM14	0.5
BEPS34.514	0.7
TEPS96LAM14	2.7

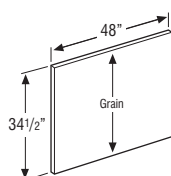
- 1/4" thick laminated furniture board.



FINISHED BACK SKINS

Model	Cubic Feet
BP4834.514	1.1

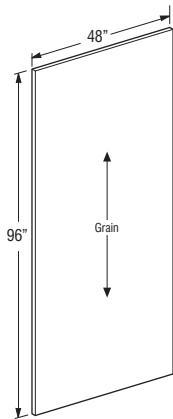
- 1/4" thick laminated furniture board.
- Grain runs with 34.5".



FINISHED BACK SKINS

Model	Cubic Feet
BP4896LAM14	2.7

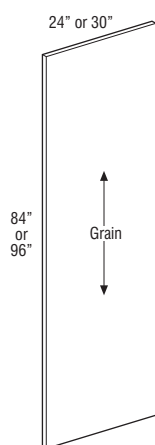
- 1/4" thick laminated furniture board.
- Grain runs with 96".



TALL END PANEL

Model	Cubic Feet
TEP2484LAM	1.3
TEP2496LAM	1.3
TEP3096LAM	1.3

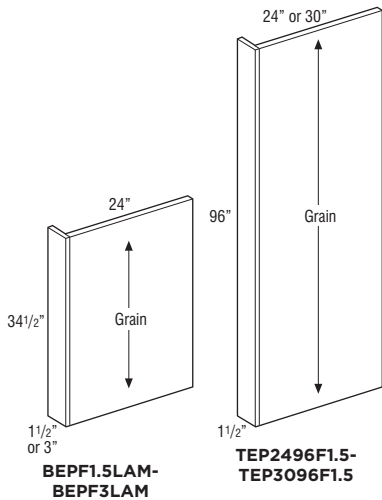
- 3/4" thick laminated furniture board.
- Panels are edgebanded on front edge.



BASE AND TALL PANELS WITH FILLER ATTACHED

Model	Cubic Feet
BEPF1.5LAM	1.7
BEPF3LAM	1.7
TEP2496F1.5	1.3
TEP3096F1.5	1.3

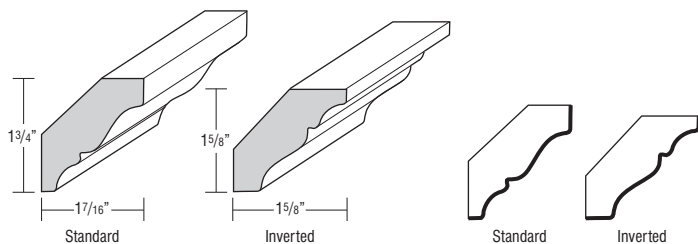
- 1/2" thick laminated furniture board.
- All panels have Natural Maple laminate interior.



CROWN MOULDING, SOLID WOOD CROWN

Model	Cubic Feet
SWCRM8	0.5

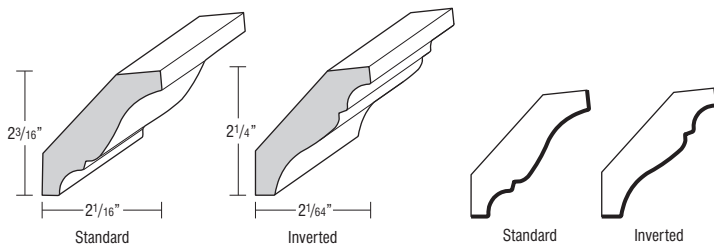
- Face mounts on Partial Overlay doors.
- May be face mounted on Full Overlay if used with a cleat.
- One 8' section.
- Moulding can be used as standard or inverted.
- Finished edges indicated by bold lines on side view drawings.



CROWN MOULDING, SOLID WOOD LARGE CROWN

Model	Cubic Feet
SWLCRM8	0.5

- Face mounts on Partial Overlay doors.
- May be face mounted on Full Overlay if used with a cleat.
- One 8' section.
- Moulding can be used as standard or inverted.
- Finished edges indicated by bold lines on side view drawings.

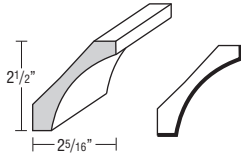


CROWN MOULDING, SMALL COVE CROWN

Model	Cubic Feet
-------	------------

SMCOVECROWN8	1.0
--------------	-----

- One 8' section.
- Finished edges indicated by bold lines on side view drawings.

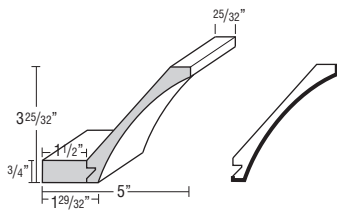


CROWN MOULDING, COVE CROWN

Model	Cubic Feet
-------	------------

COVECROWN8	1.0
------------	-----

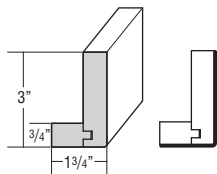
- One 8' section.
- Cleat shipped unattached can be used for top mount or face frame applications.
- Finished edges indicated by bold lines on side view drawings.



STARTER MOULDING, SHAKER

Model	Cubic Feet
STRS8	1.0

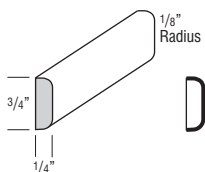
- One 8' section.
- Finished edges indicated by bold lines on side view drawings.



ACCENT MOULDING, FLAT SCRIBE

Model	Cubic Feet
SM8	0.5

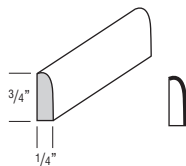
- One 8' section.
- Finished edges indicated by bold lines on side view drawings.



ACCENT MOULDING, SMALL SCRIBE

Model	Cubic Feet
SSM8	0.5

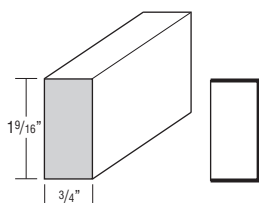
- One 8' section.
- Finished edges indicated by bold lines on side view drawings.



ACCENT MOULDING, LIGHT BAFFLE

Model	Cubic Feet
LB2	0.5

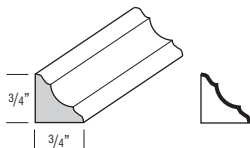
- One 8' section.
- Finished edges indicated by bold lines on side view drawings.



CORNER MOULDING, INSIDE CORNER

Model	Cubic Feet
ICM8	0.5

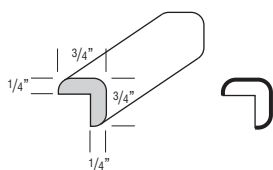
- One 8' section.
- Finished edges indicated by bold lines on side view drawings.



CORNER MOULDING, OUTSIDE CORNER

Model	Cubic Feet
OCM8	0.5

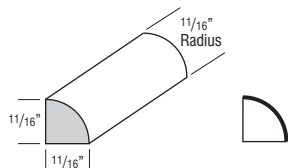
- One 8' section.



CORNER MOULDING, QUARTER ROUND

Model	Cubic Feet
QRM	0.5

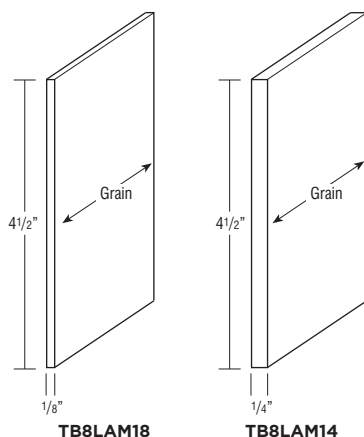
- One 8' section.
- Finished edges indicated by bold lines on side view drawings.



TOEBOARD

Model	Cubic Feet
TB8LAM18	0.1
TB8LAM14	0.1

- One 8' section.
- TB8LAM18: 1/8" laminated furniture board.
- TB8LAM14: 1/4" laminated furniture board.



STRAIGHT VALANCE / BASEBOARD

Model	Cubic Feet
VV48	0.4
VV96	0.4

- Trimmable.
- Profiled bottom edge 3/4" thick.

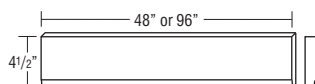


TABLE OF CONTENTS – ACCESSORIES AND HINGES

Roll Tray Kits77

Tilt-out Trays78

Bumper Pads78

Drawer Guide Kits79

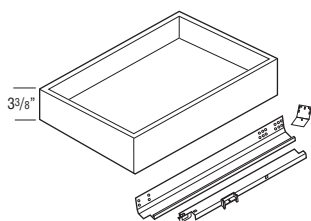
Mini Touch-up Kit79

Hinges80

ROLL TRAY KITS

Model	Cubic Feet
RT15WD	0.5
RT18WD	0.8
RT21WD	0.9
RT24WD	1.0
RT27WD	1.4
RT30WD	1.4
RT33WD	1.6
RT36WD	1.6
RT42WD	1.8

- 5/8" solid-wood dovetail roll tray with soft-closing, undermount, full extension guides.
- RT15WD-RT36WD kits contain 1 roll tray, roll tray brackets, hardware, and screws.
- RT42WD kits contain 2 roll trays, roll tray brackets, hardware, and screws.
- Exterior dimensions of roll trays are 21" deep x 3 3/8" tall (fits standard 24" deep cabinet).

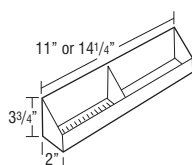


Width	Application
15"	B15, B15FH, B1532.5
18"	B18, B18FH, B1832.5, U18
21"	B21, B2132.5, B21FH
24"	B24, B24FH, B2432.5, U24
27"	B27, B2732.5
30"	B30, B30FHB, B3032.5
33"	B33, B3332.5
36"	B36, B36FH, B3632.5
42"	B42, B4232.5

TILT-OUT TRAYS

Model	Cubic Feet
TOT15	0.1
TOT18	0.2

- TOT15: 11" w X 2" d X 3 3/4"
- TOT18: 14 1/4" w X 2" d X 3 3/4"
- Kit includes two white plastic trays and one pair of tilt-out hinges that attaches to the inside of the false panel.
- One tilt-out tray per false panel on cabinets less than 30" wide and greater than 36" wide, two tilt-out trays attached to one false panel on 30"-36" wide cabinets.



Cab Width	TOT Size	Cabinets
24"	TOT18	SB24, SB2432.5, VSB2432.521, VSB243421
27"	TOT18	SB27, SB2732.5
30"	TOT15	SB30, SB3032.5, VSB3032.521, VSB303421
33"	TOT15	SB33, SB3332.5
36"	TOT18	SB36, SB3632.5, VSB3632.521, VSB363421
42"	TOT18	SB42, SB4232.5
48"	TOT18	SB48CS, SB4832.5CS

BUMPER PADS

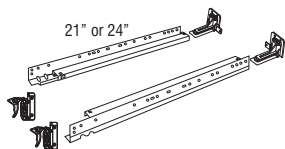
Model	Cubic Feet
BUMPERPADS	0.5

- Package of 25.

DRAWER GUIDE KITS

Model	Cubic Feet
DGK21PG	0.5
DGK24PG	0.5

- Undermount full extension, soft-close guide.
- Kit includes guide hardware for one drawer box (cabinets and drawer members, sockets and screws).
- Dimension refers to cabinet depth.



MINI TOUCH-UP KIT

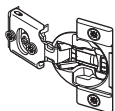
Model	Cubic Feet
MTUK	0.1

- Includes small touch-up marker and a small fill stick.

PARTIAL OVERLAY HINGE

Model	Cubic Feet
38NPOHINGE	0.5

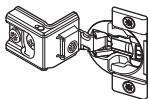
- Partial Overlay Hinge, 6-way adjustable with integrated soft-close.
- Sold in pairs.
- 1/2" partial overlay 107° hinge.
- For use on Partial Overlay Styles, Full Overlay Diagonal Wall Cabinets and Angled Corner Sink Fronts.



FULL OVERLAY HINGE

Model	Cubic Feet
38CFOHINGE	0.5

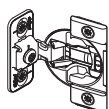
- Full Overlay 107° Hinge, 6-way adjustable with integrated soft-close.
- Sold in pairs.



FULL OVERLAY HINGE

Model	Cubic Feet
38BFOVHINGE	0.5

- Full Overlay face mount 107° Hinge, 4-way adjustable with integrated soft-close.
- Sold in pairs.
- For use on OC3D cabinets.



HINGE ANGLE RESTRICTION CLIP

Model	Cubic Feet
HINGERESCLIP	0.1

- For use in applications with cabinets installed at varying depths to prevent the door damage caused by opening into an adjacent cabinet.
- Restricts hinges to 86° opening capability.
- Works only with the 38NPOHINGE and 38CFOHINGE.
- Not recommended for cabinets with roll trays installed in partial overlay styles.
- Sold in pairs.



HINGE SHIM

Model	Cubic Feet
-------	------------

HINGESHIM5	0.1
------------	-----

- Install between the face frame and hinge to allow additional adjustment of doors.
- Can be used to reduce gap between butt doors.
- Pack of 5 metal shims.
- Compatible with all hinges except face-mount.



MANTRA™



**National Forest
Foundation**

Mantra cabinets have a five year limited warranty. For terms & conditions, please visit [mantracabinets.com/warranty](https://www.mantracabinets.com/warranty).

Cabinet Care and Cleaning Instructions: <https://www.masterbrand.com/care-and-cleaning>

Styles, product availability and construction may vary slightly from those shown due to material availability and/or design evolution. Specifications are subject to change without notice. Our customer service team is available if your design requires verification of product availability and specifications.



**Part of the
MasterBrand™
Family**

[mantracabinets.com](https://www.mantracabinets.com)

#MantraCabinets

© 2020 MasterBrand Cabinets, Inc. All rights reserved

844-846-4572