

SWIFTWIND GINGER SPICE
D1991896P

04/21/2018 OWNER: BLUE RIVER RANCH
DOE POLLED

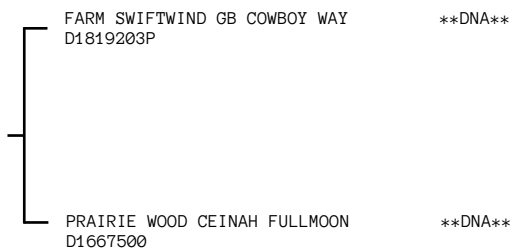
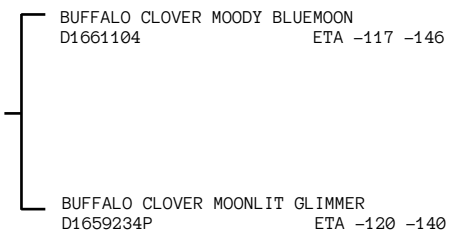
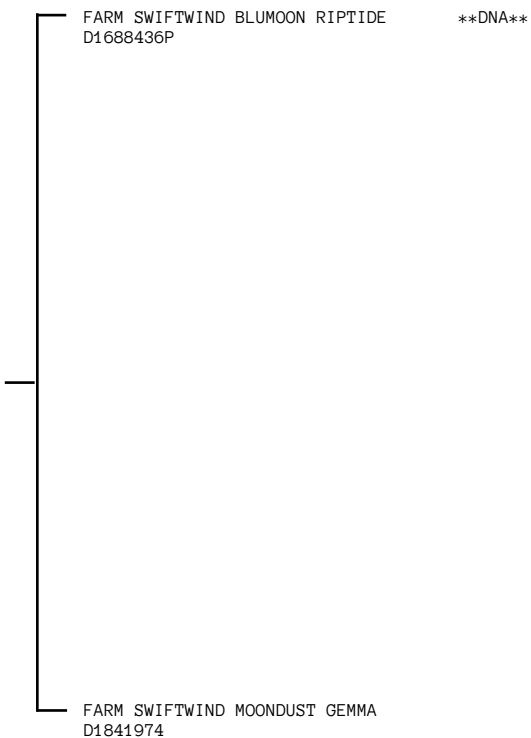


American Dairy Goat Association

P.O. Box 865 Spindale NC 28160
(828) 286-3801 Fax (828) 287-0476
support@adga.org ADGA.org

RE: SWF5 LE: K53

A * in a doe's DHIR section signifies a breed leader record.
Note: 4th Generation contains limited performance data



AGS BUFFALO CLOVER VALENTINO						
D1470378P	++B	GC	PTI	-152	-196	
PTA	-32M	-3F	-2P	-	.90T	
PTA\$		-6	-9		82R	

BUFFALO CLOVER MANDY						
D1471856			PTI	-83	-95	
PTA	-41M	-1F	-2P	-	.40T	
PTA\$		-5	-5		39R	

AGS BUFFALO CLOVER VALENTINO						
D1470378P	++B	GC	PTI	-152	-196	
PTA	-32M	-3F	-2P	-	.90T	
PTA\$		-6	-9		82R	

LITTLE TOTS ESTATE NUNU						
D1470363	3*M	GC	PTI	-89	-85	
PTA	-34M	-2F	-1P	-	.30T	
PTA\$		-5	-6		56R	

CHENANGO-HILLS GODDESS' BALLYD						
D1675428	*B		ETA	-25	-120	

BUFFALO CLOVER MOONLIT GLIMMER						
D1659234P			ETA	-120	-140	

CABIN CREEK MINIS SIR DAYNE						
D1614403			C			

AGS GOOD MEASURE FARM PHANTOM						
D1544900						
PTA	-18M	-1F	-1P			
PTA\$		-3	-4			