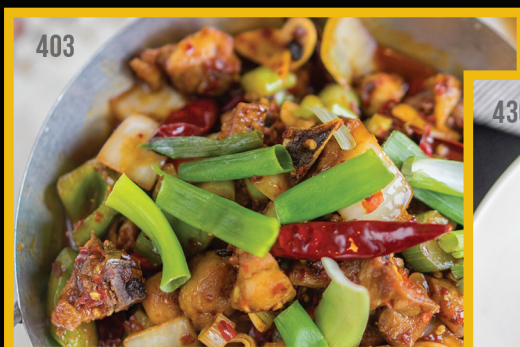


# ENTRÈES 主菜

SERVES TWO OR MORE PEOPLE.



## POULTRY 雞鴨

- 400 SWEET & SOUR CHICKEN 甜酸雞 \$15.95
- 401 CASHEW NUTS CHICKEN 腰果雞丁 • \$15.95
- 402 SESAME CHICKEN 芝麻雞 \$15.95
- 403 LALALA CHICKEN IN POT 辣辣辣乾鍋雞 •• \$17.95
- 404 SZECHUAN CHICKEN 四川雞 •• \$15.95
- 405 HUNAN CHICKEN 湖南雞丁 •• \$15.95
- 406 BASIL CHICKEN 九層塔雞柳 •• \$15.95
- 407 TONY'S CHICKEN WITH THREE CHILI 三椒雞丁 • \$16.95 **POPULAR**
- 408 SZECHUAN TEA-SMOKED DUCK (BONE-IN) 樟茶鴨 \$17.95
- 409 CHEF'S SPECIAL CRISPY DUCK (BONE-IN) 香酥鴨 \$17.95 **POPULAR**
- 410 STIR-FRIED SLICED DUCK WITH GINGER 姜爆鴨絲 \$17.95
- 411 DOUBLE FRIED SLICED DUCK 干鍋鴨絲 • \$17.95

## BEEF / LAMB 牛羊

- 412 HONEY GARLIC PEPPER BEEF TENDER 蒜香黑椒牛肉 \$16.95
- 413 GREEN PEPPER BEEF 青椒牛肉 \$16.95
- 414 PEPPERCORN W/ BEEF SLICES 青花椒肥牛 \$18.95 **POPULAR**
- 415 HUNAN BEEF 湖南牛肉 •• \$16.95
- 416 SZECHUAN BEEF 四川牛肉 •• \$16.95
- 417 CHEF'S SP DICED BEEF W/ TOFU 老四川豆花牛 •• \$16.95
- 418 SIZZLING BEEF TENDERLOIN 鐵板牛肉 •• \$16.95
- 419 HS BEEF BRISKET W/ BEER IN POT 啤酒牛腩 • \$18.95
- 420 BOILED BEEF IN SPICY SZECHUAN SAUCE 水煮牛肉 •• \$17.95
- 421 BEEF STEW W/ DRY BEAN ROLL IN POT 腐竹燉牛腩 \$16.95 **POPULAR**
- 422 LAMB STEW W/ WOLFBERRY IN POT 枸杞羊肉湯煲 • \$16.95

## PORK 豬肉

- 423 HOMELAND GROUND PORK 家乡外婆菜 • \$14.95 **POPULAR**
- 424 EGGPLANT W/ GROUND PORK 碎肉酥茄子 \$12.95
- 425 PORK BELLY STEW W/ RICE NOODLES 猪肉炖粉条 • \$15.95
- 426 CHAIRMAN MAO HONG SUE PORK BELLY 毛氏紅燒肉 • \$15.95
- 427 PORK STIR-FRIED IN PEKING SAUCE 京醬肉絲 \$15.95
- 428 STEAMED PORK BELLY W/ SWEET PICKLE 梅菜扣肉 \$15.95
- 429 TWICE COOKED PORK BELLY SZECHUAN 回鍋肉 •• \$13.45 **POPULAR**
- 430 LAO GAN MA SPECIAL SHORT RIBS 老干妈一品排骨 •• \$17.95
- 431 SHREDDED PORK W/ CILANTRO 香辣酥肉絲 •• \$14.95
- 432 SLICED PORK, DRY BEAN CURD W/ CHIVES 香干肉絲 \$14.95
- 433 DOUBLE FRIED SPICY PORK INTESTINE (DRY) 干鍋肥腸 • \$15.95
- 434 MALA SZECHUAN PORK INTESTINE 麻辣肥腸 • \$15.95
- 435 GROUND PORK W/ GLASS NOODLE 螞蟻上樹 • \$13.95 **POPULAR**
- 436 BRAISED MEAT BALL 紅燒獅子頭 \$15.95

## WOULD YOU LIKE EXTRA?

MEAT +3.00 | SEAFOOD +4.00 | VEGGIES +2.00  
 MUSHROOM +2.00 | TOFU +2.00  
 MEAT EXCHANGE TO SEAFOOD +2.00

Spice Level • Vegetarian • With Nuts • Gluten-Free Friendly •

Pictures are for reference only. Prices are subject to change without notice.  
 20% automatic service charge for party of 5 and up. Max 4 bill splits per table.  
 There's a \$1 charge for a bowl of steamed rice with free refills.