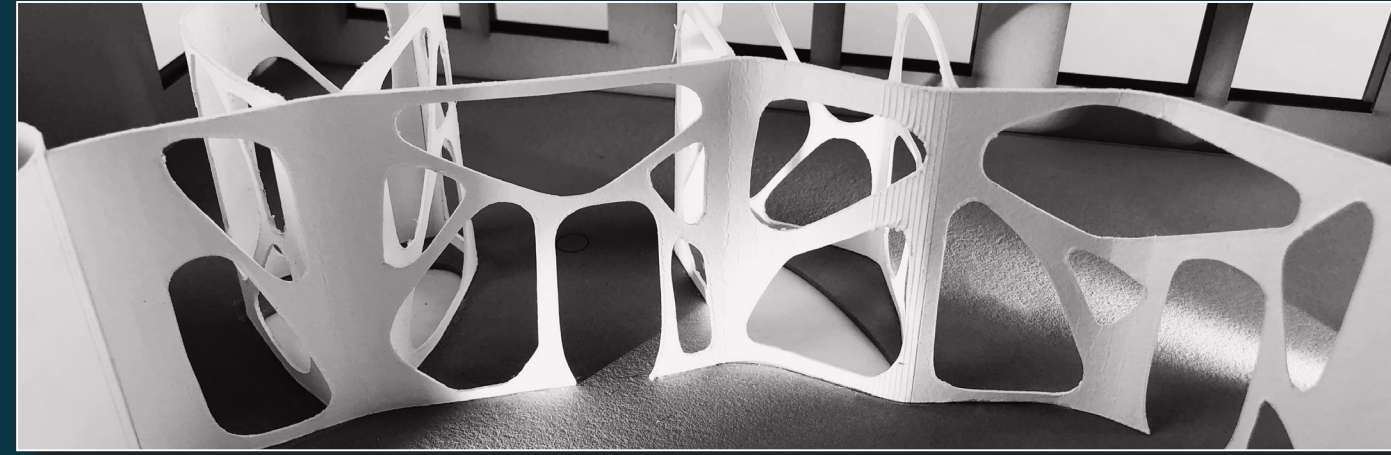


ARTISAN CRAFT
CHRISTIAN HINZE



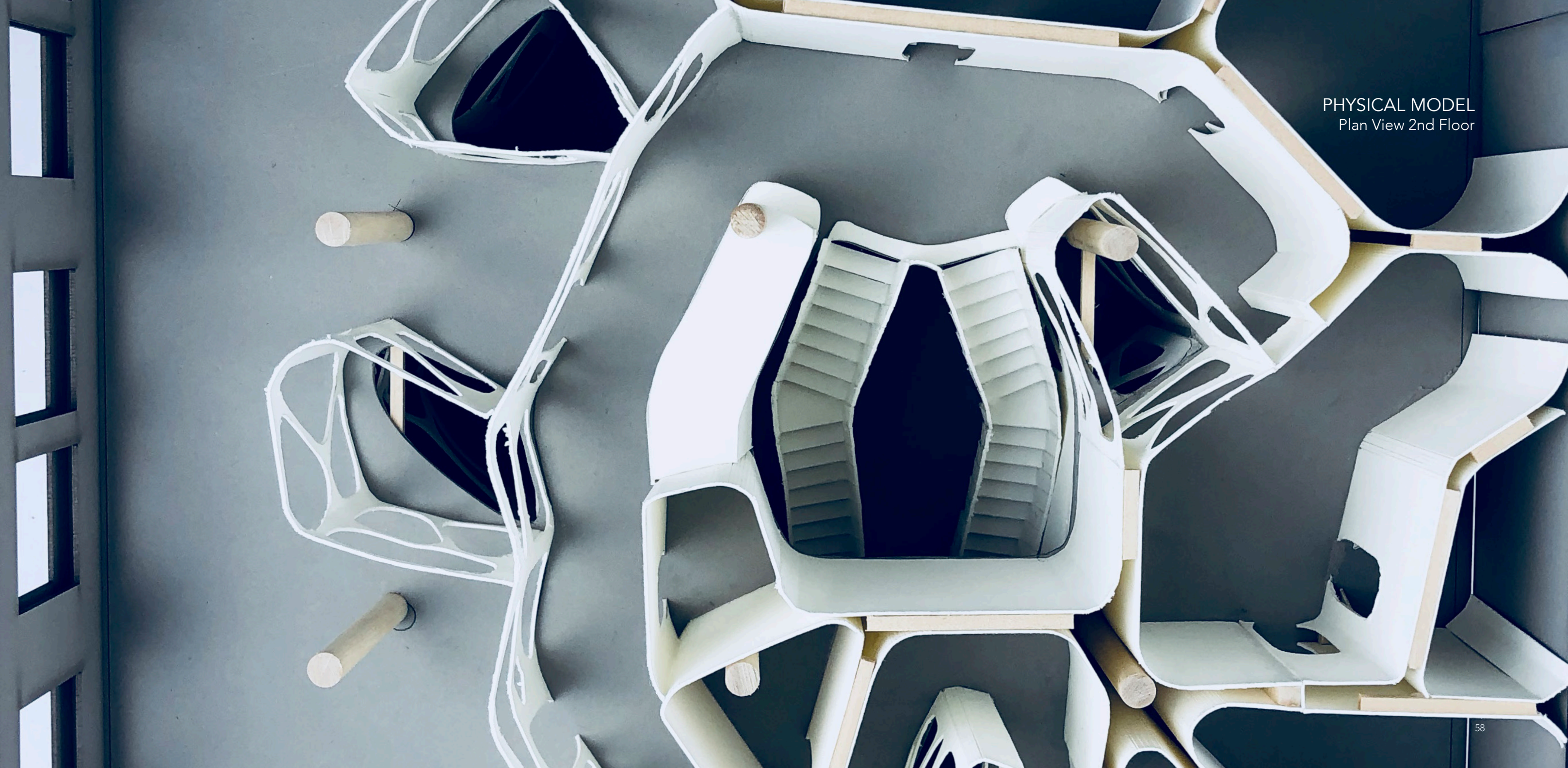
Integrated Health Center

Patient Focus - Fibromyalgia

An alternative holistic health center that aims to assuage its clients pains with its services as well as with its built structure.

An organically shaped interior soothes the visual and haptic perception while creating ample daylight hotspots throughout all levels.

PHYSICAL MODEL
Plan View 2nd Floor



PATHOLOGY ANALYSIS

Fibromyalgia Patients

FIBROMYALGIA - DEFINITION

Fibromyalgia is chronic, widespread pain that's thought to be the result of overactive nerves in the body.

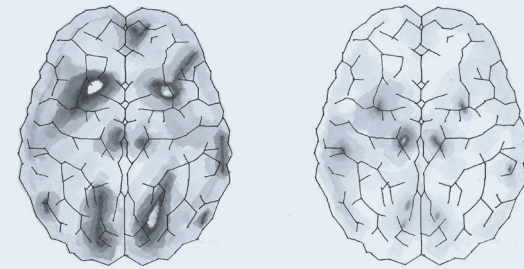
It is considered chronic when lasting at least 3 months or longer. In order to be considered widespread, the pain must occur on both sides of the body above and below the waist.

CAUSES

Changes in the central nervous system - the brain, spinal cord and nerves. Genetics, infections, physical or emotional trauma

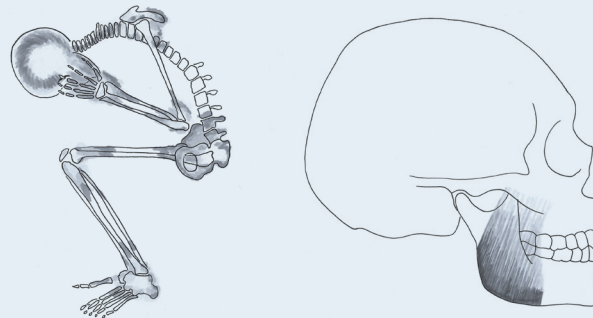


BRAIN ACTIVITY SCAN



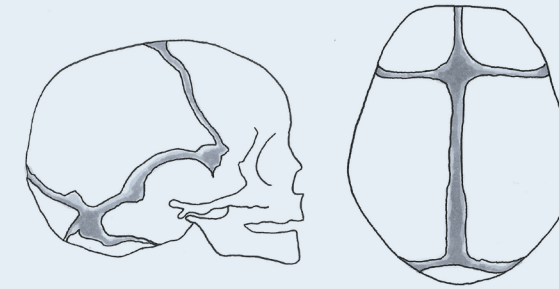
A CAT scan compares brain activity during periods of depression (left) with normal brain activity (right). Brighter areas shows decreased brain activity due to depression.

TYPICAL PAIN CENTERS FOR FIBROMYOLGIA



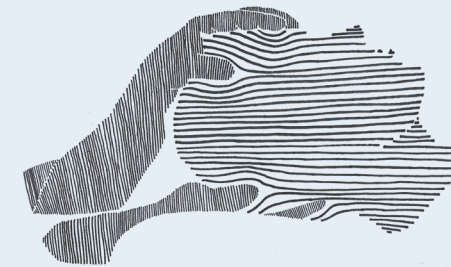
Lasting pain, stiff muscles and tender spots around the body originate mainly in the tissues and the joints of the body as well in the brain.

CRANIO-SACRAL SUTURES



Cranio-sacral therapy applies smallest amounts of pressure (max. 5 g) to directly influence the cranial rhythm and motion of all skull bones.

APPLIED CRANIO-SACRAL THERAPY



Cranio-sacral therapy uses gentle, relaxing, light touch that is non-invasive by applying mild pressure to the cranium and sacrum. This balances, relaxes and re-sets the central nervous system.

HEALING ANALYSIS

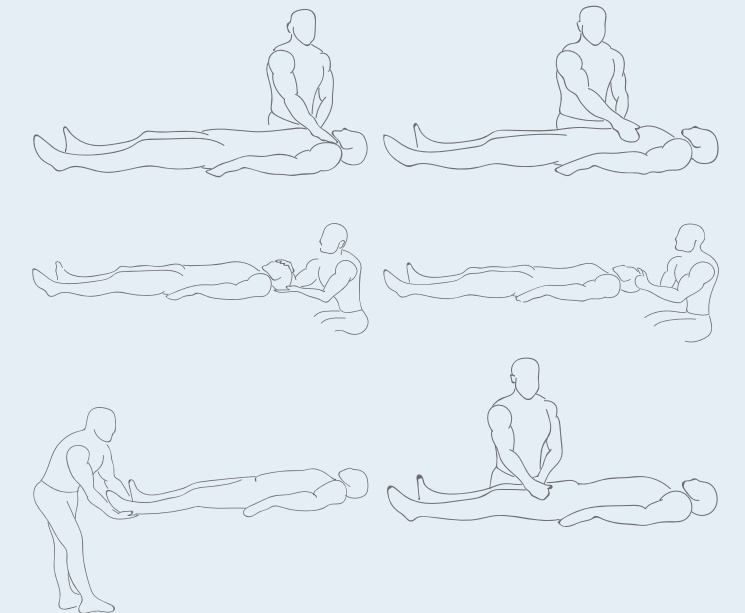
Cranio-Sacral Therapy

CRANIO-SACRAL-THERAPY - DEFINITION

Craniosacral therapy (CST) is an alternative therapy using gentle, relaxing, non-invasive, light touch to manipulate the synarthrodial joints of the cranium as well as to the spine and pelvic bones.

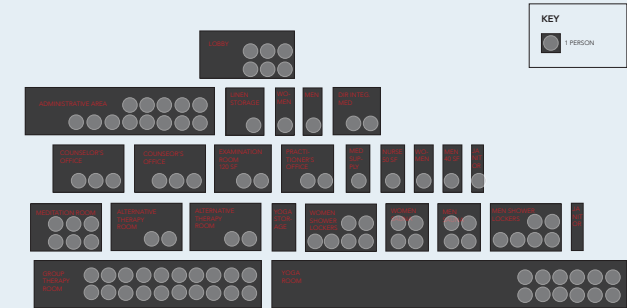
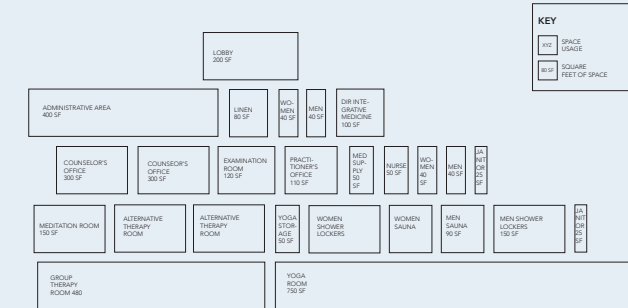
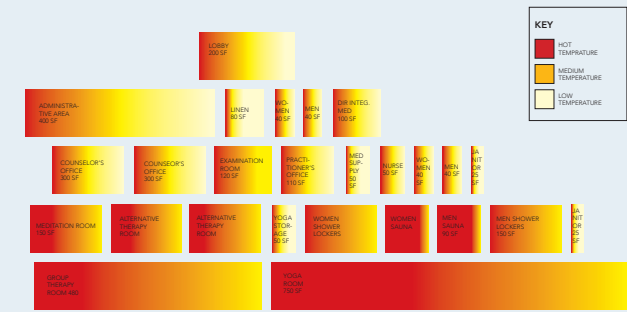
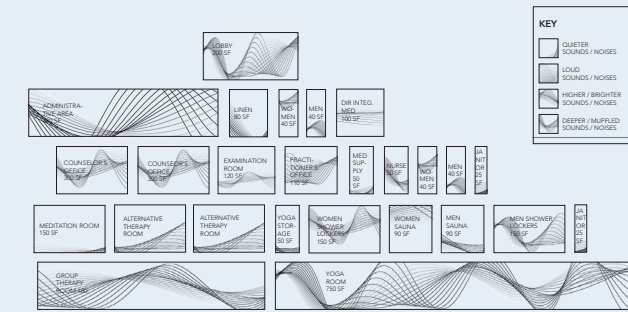
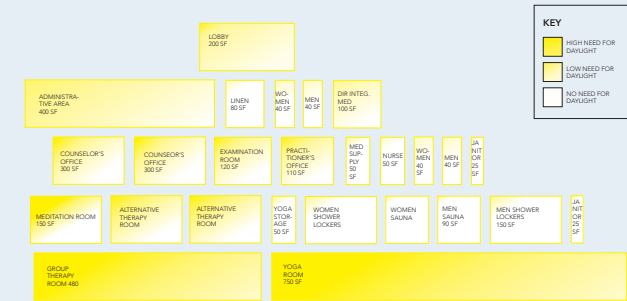
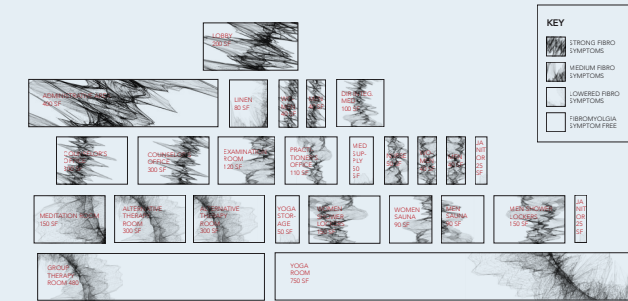
CST utilizes a very small force, working with the body rather than against it to remove long standing restrictions, stresses and strain patterns, to enable the body's self-healing ability.

It may be used safely on patients of all ages, from newborns to senior citizens as well as those with varying degrees of pain.



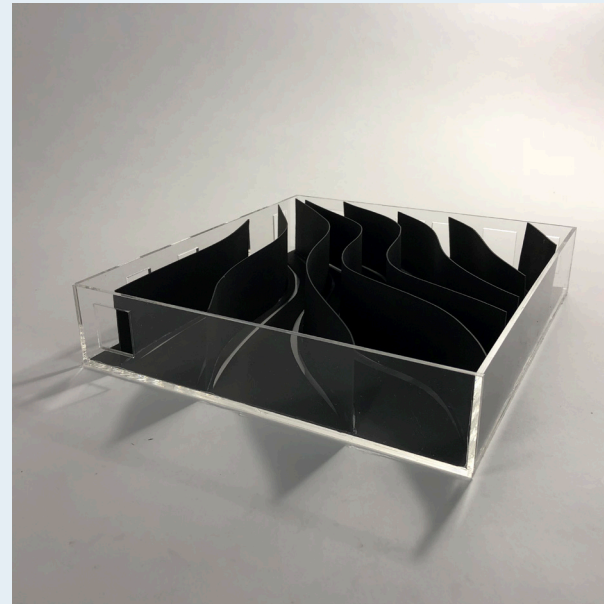
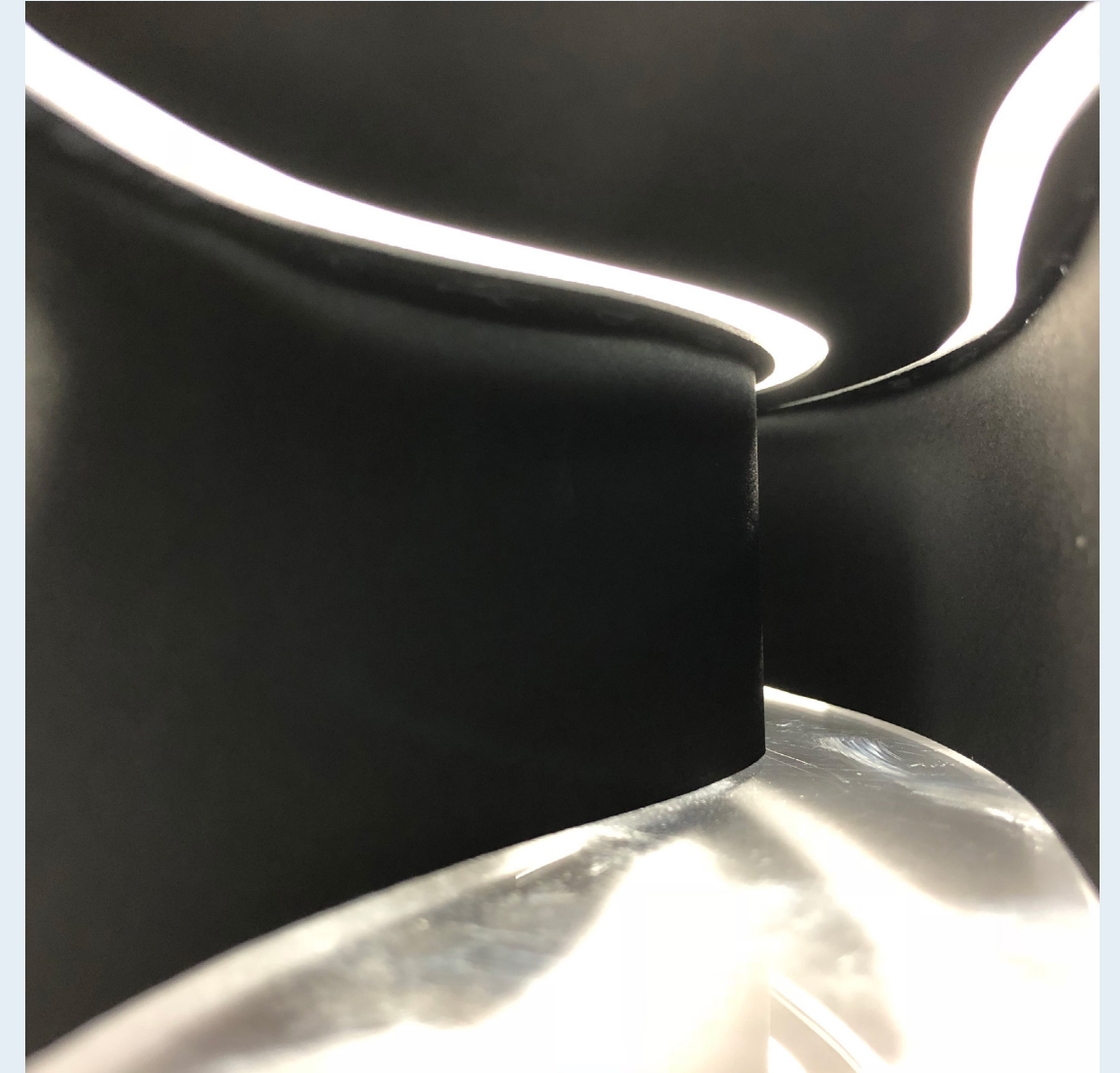
DIAGRAMMATIC ANALYSIS

Symptoms, Sound, Space, Light, Temperature, Occupancy

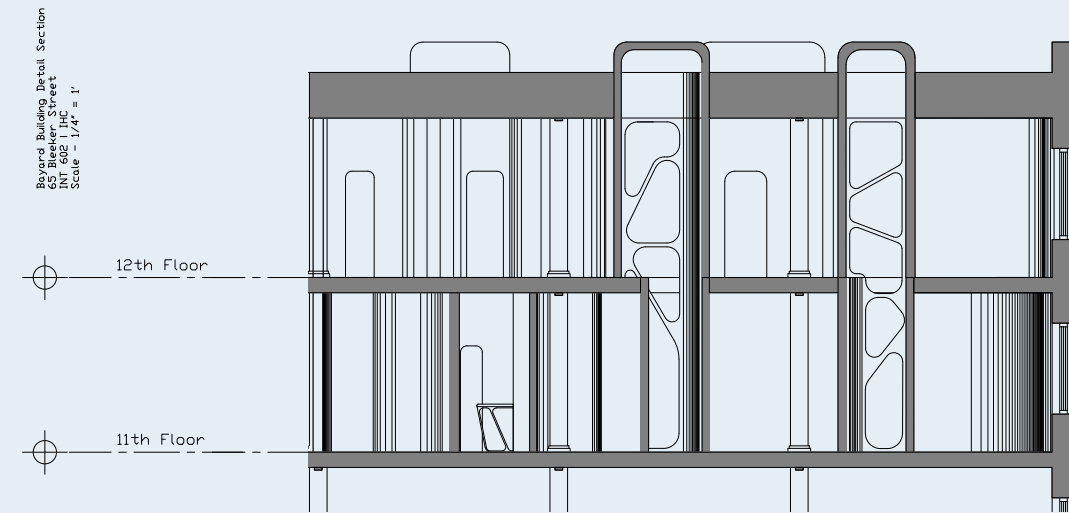
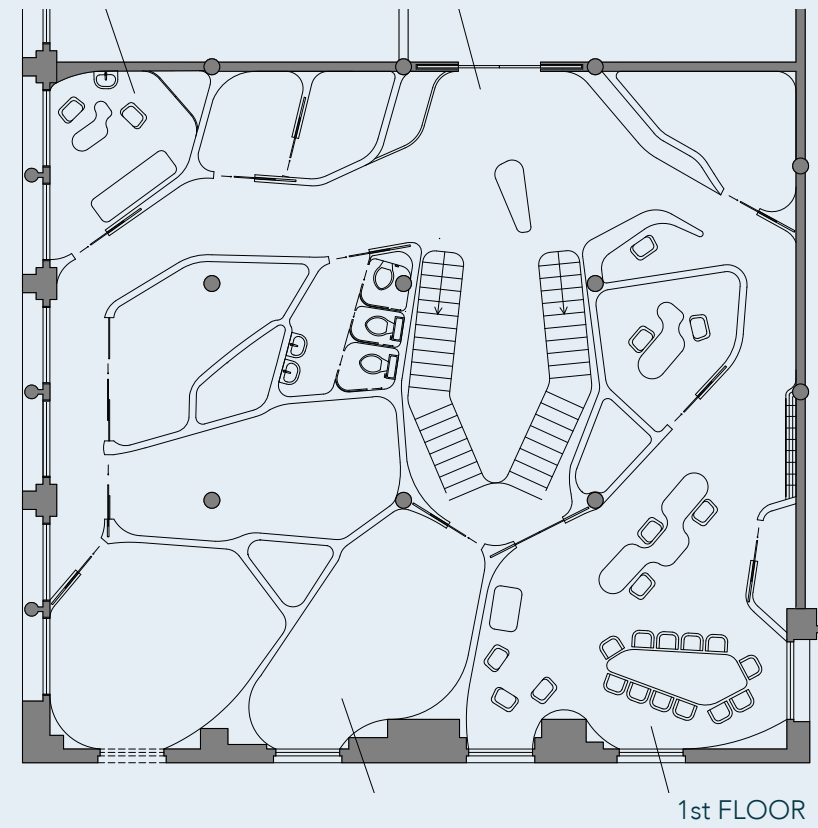


PHYSICAL SKETCH MODEL

Curved Corridor Investigation

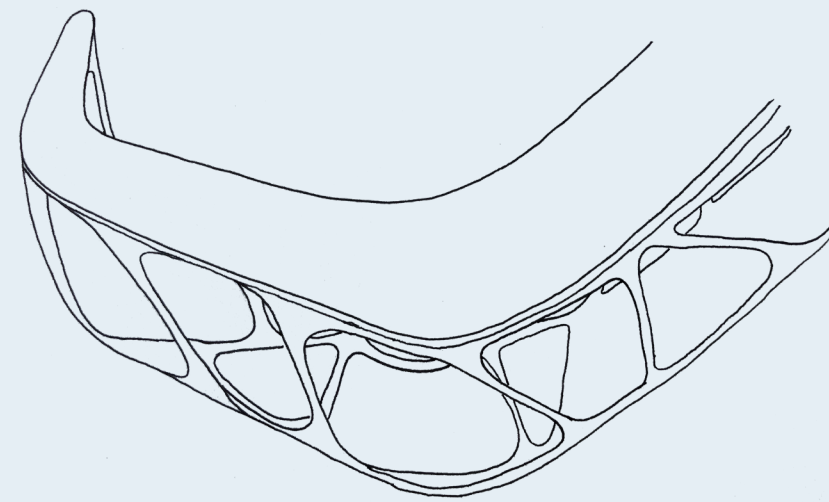
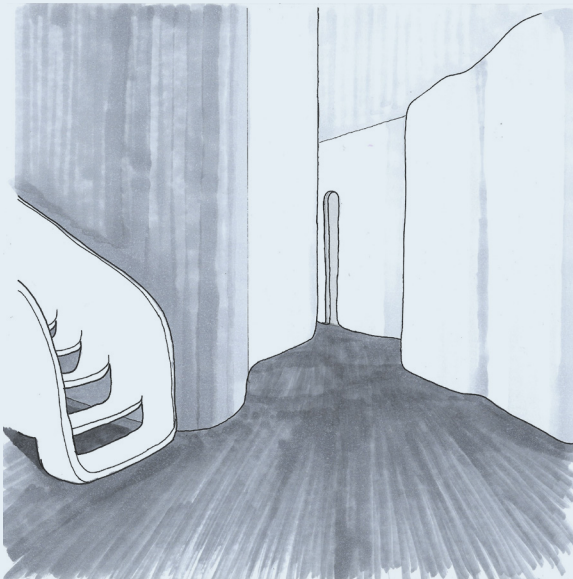
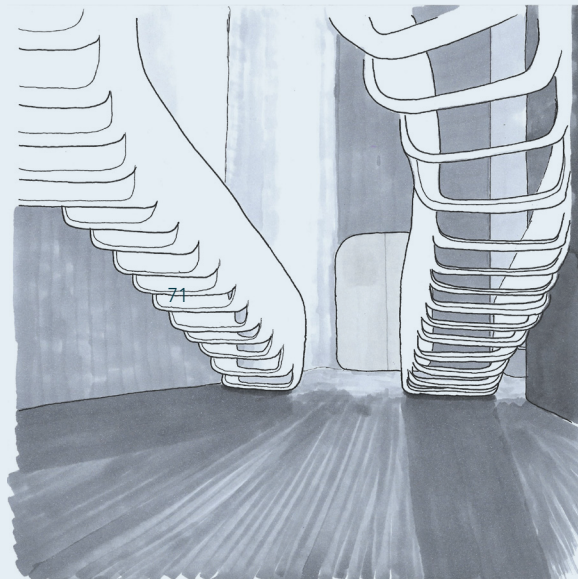
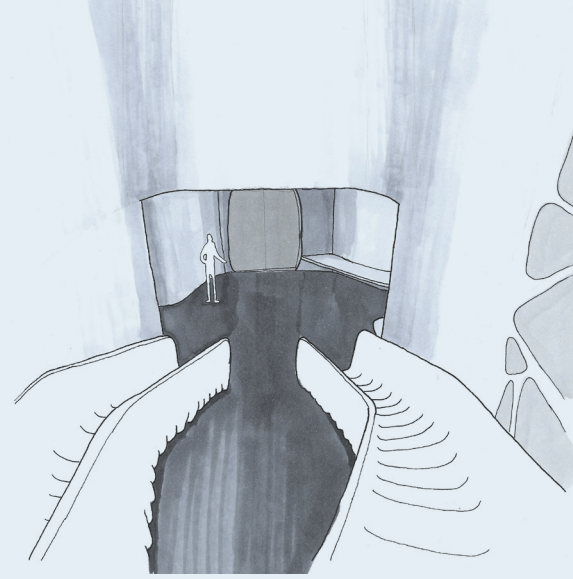
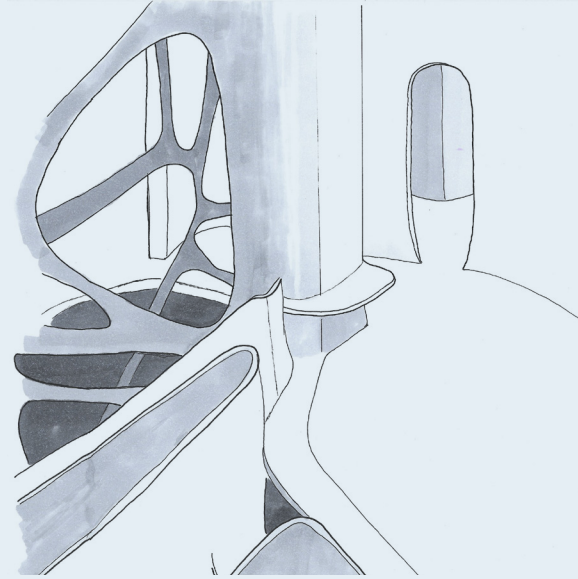


ARCHITECTURAL DRAWINGS
Floor Plans & Section - AutoCAD

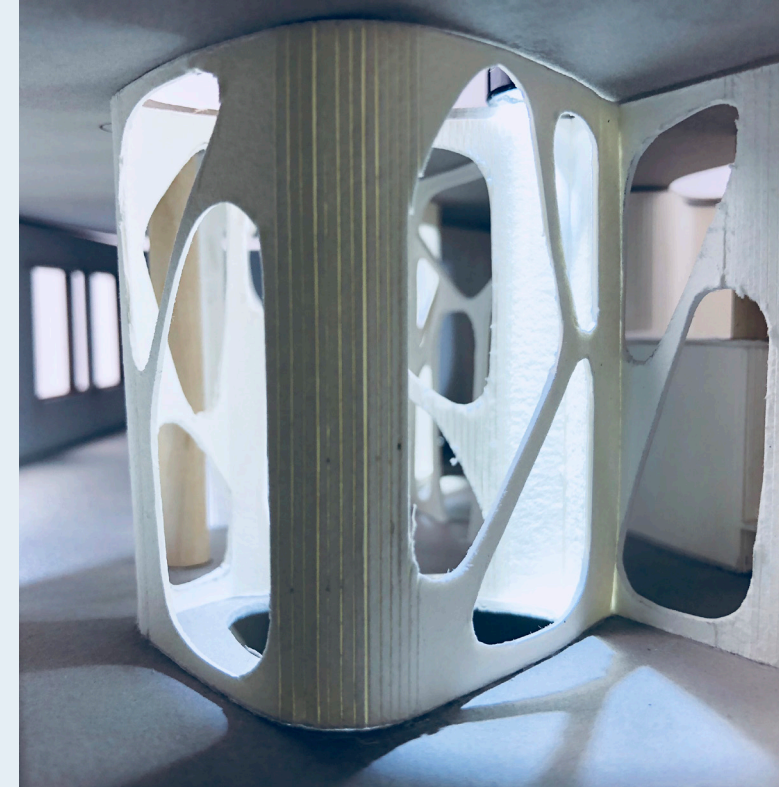


ARTISAN CRAFT
CHRISTIAN HINZE

PERSPECTIVE DRAWINGS
Interior Views



reception desk - sketch



PHYSICAL MODEL
2nd Floor & Perspectives

ARTISAN CRAFT
CHRISTIAN HINZE



TheBeSide

Online Start-Up Office - Music Streaming Services

Music is the heart and soul of "The Be Side's" business.

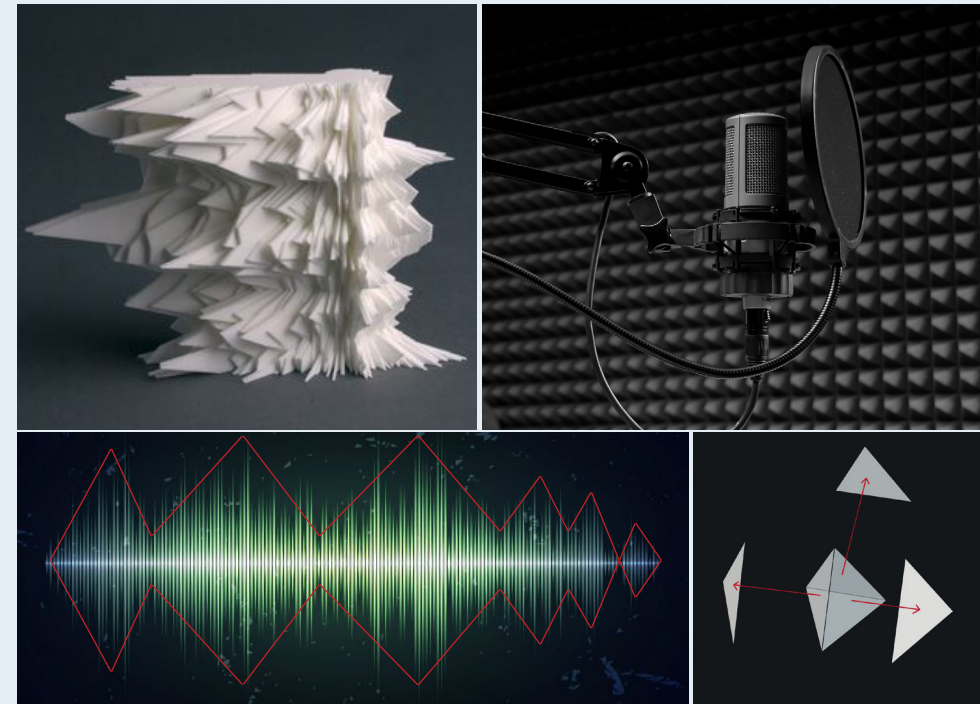
Investigating the aesthetic properties of music, by visualizing sound to explore how its qualities positively influence the human senses and stimulating moods, the goal was to transfer gained insights into the build environment.

Manifesting the omnipresent acoustic flow of sounds in the interior, while honoring the existing historic structure of industry city's building complex was the driving force in this design approach.



PERSPECTIVE VIEW
Rhino 6.0 & V-Ray

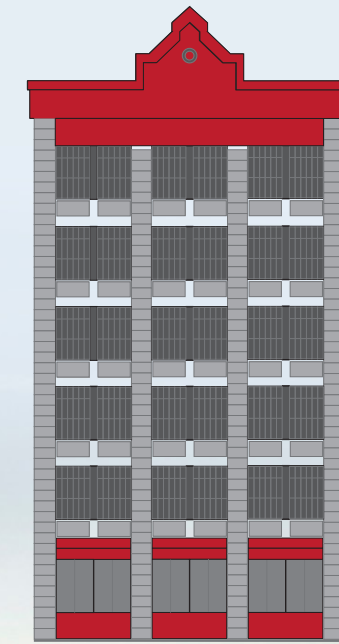
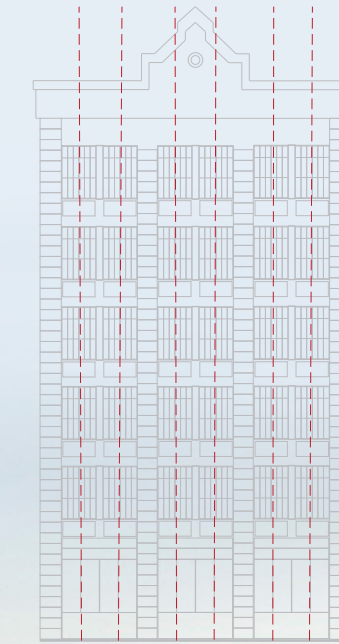
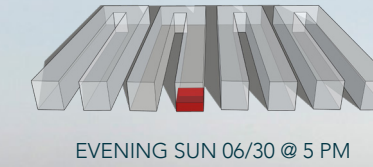
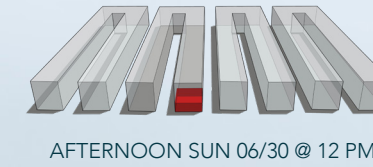
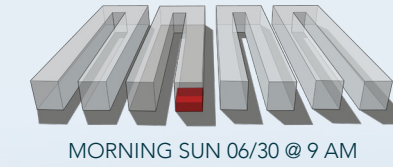
CONCEPTUAL APPROACH Form Finding & Color Palette Selection



EXTRACTING TRIANGLE SHAPES
SOUND WAVE & ACOUSTIC FOAM PYRAMID



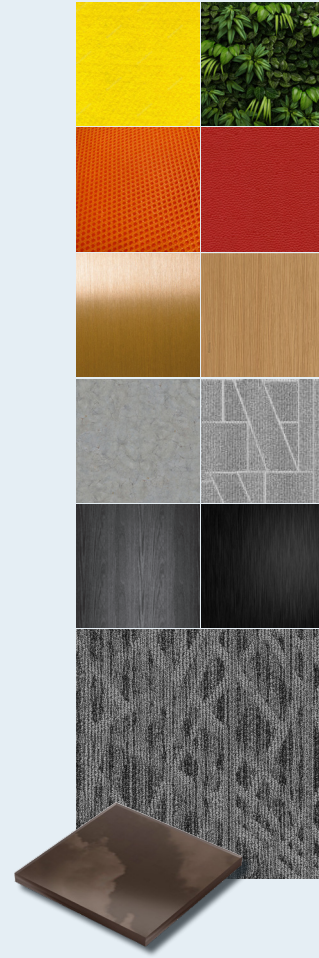
LOGO DESIGN DEVELOPMENT
PREDOMINANTLY BRIGHT SIGNAL COLORS & DARK BACKGROUNDS



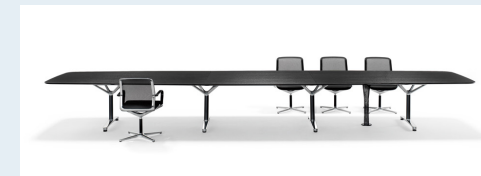
SPACE SCHEME
Material and Color Palette



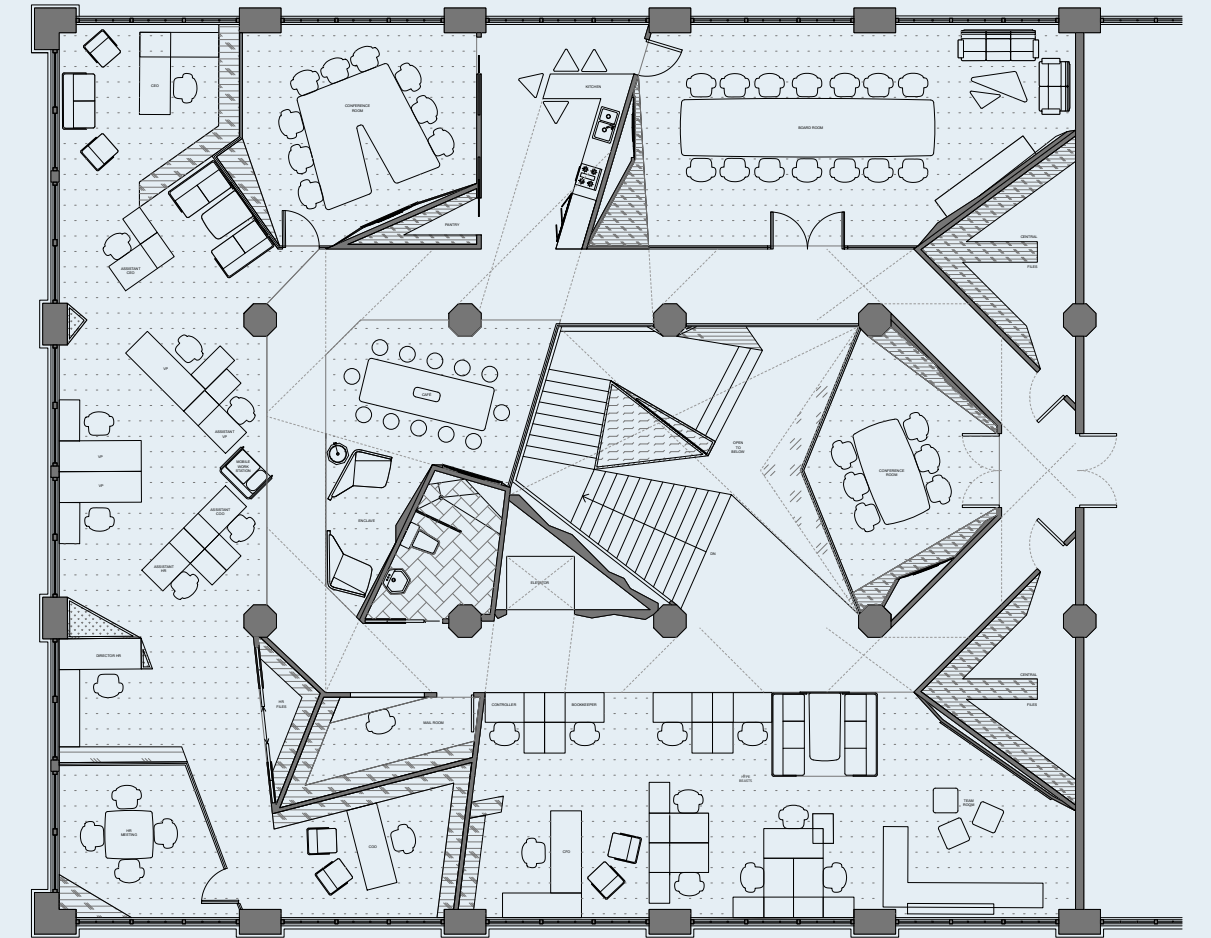
1st FLOOR
room layout arrangement is derived from triangle shapes



ARCHITECTURAL DRAWINGS
2nd Floor Plan



FURNITURE SELECTION
EXECUTIVE OFFICE / CAFÉ SEATING / CONFERENCE



2nd FLOOR
felt / mesh / leather / glass / oak / brass / blackened wood & metal / concrete / carpet

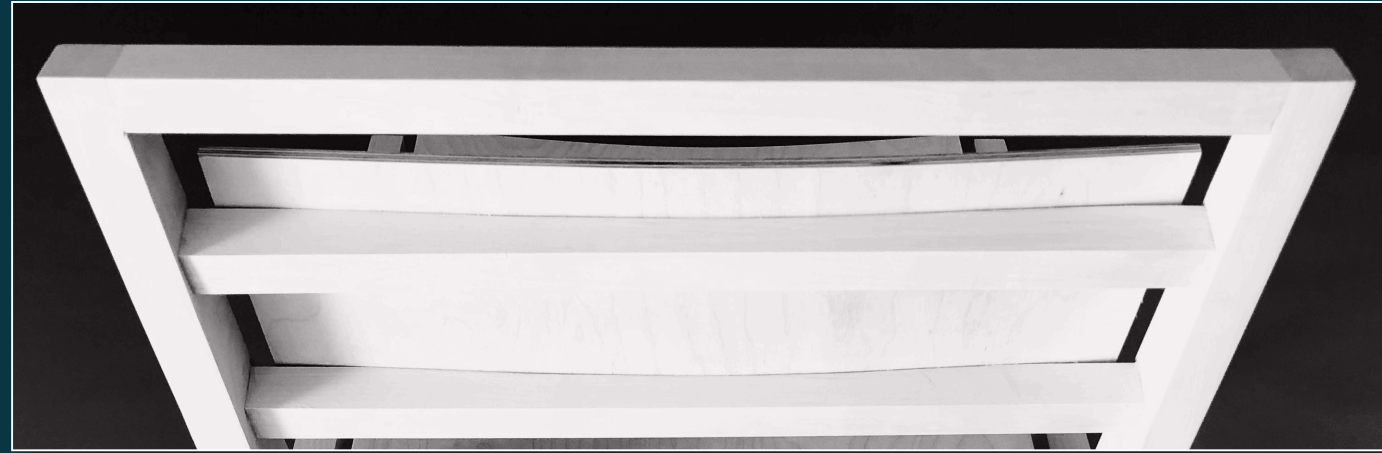
ARTISAN CRAFT
CHRISTIAN HINZE

PHYSICAL MODEL
Stair Investigation



PERSPECTIVE RENDERING
Rhinoceros 6.0 & V-RAY

ARTISAN CRAFT
CHRISTIAN HINZE



Danish Design

Seating Furniture

"INDRAMMET" - framed - is a decorative lounge chair.

The chair's outer structure frames the floating seat and backrest like a picture frame.

A contemporary interpretation based on Danish Design Paragons: simplicity & honesty to material.

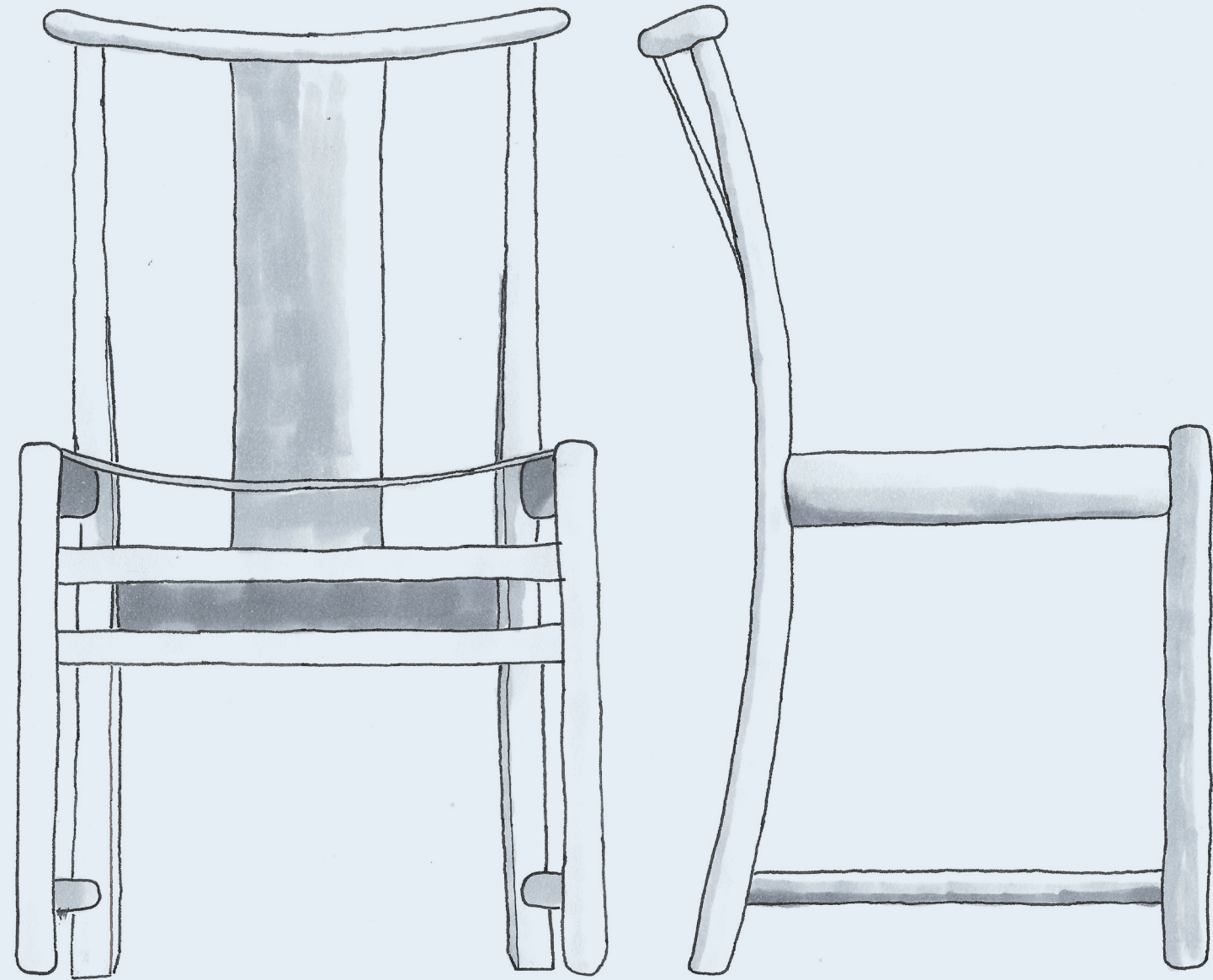
The assembly of this full scale object strictly followed traditional Danish rules of furniture making. No metal screws were used. All connections are visible and were made out of the same wood as the main body.

PHYSICAL MODEL
Full Live-Size Chair



ARTISAN CRAFT
CHRISTIAN HINZE

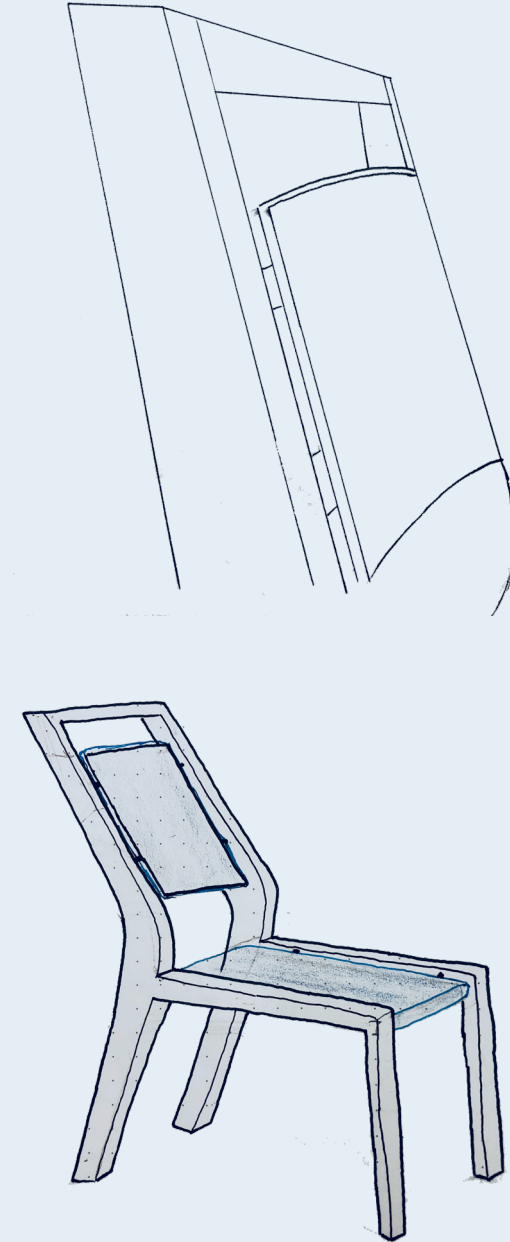
SKETCH STUDY
ARNE JACOBSEN - BELLEVUE DINING ROOM CHAIR



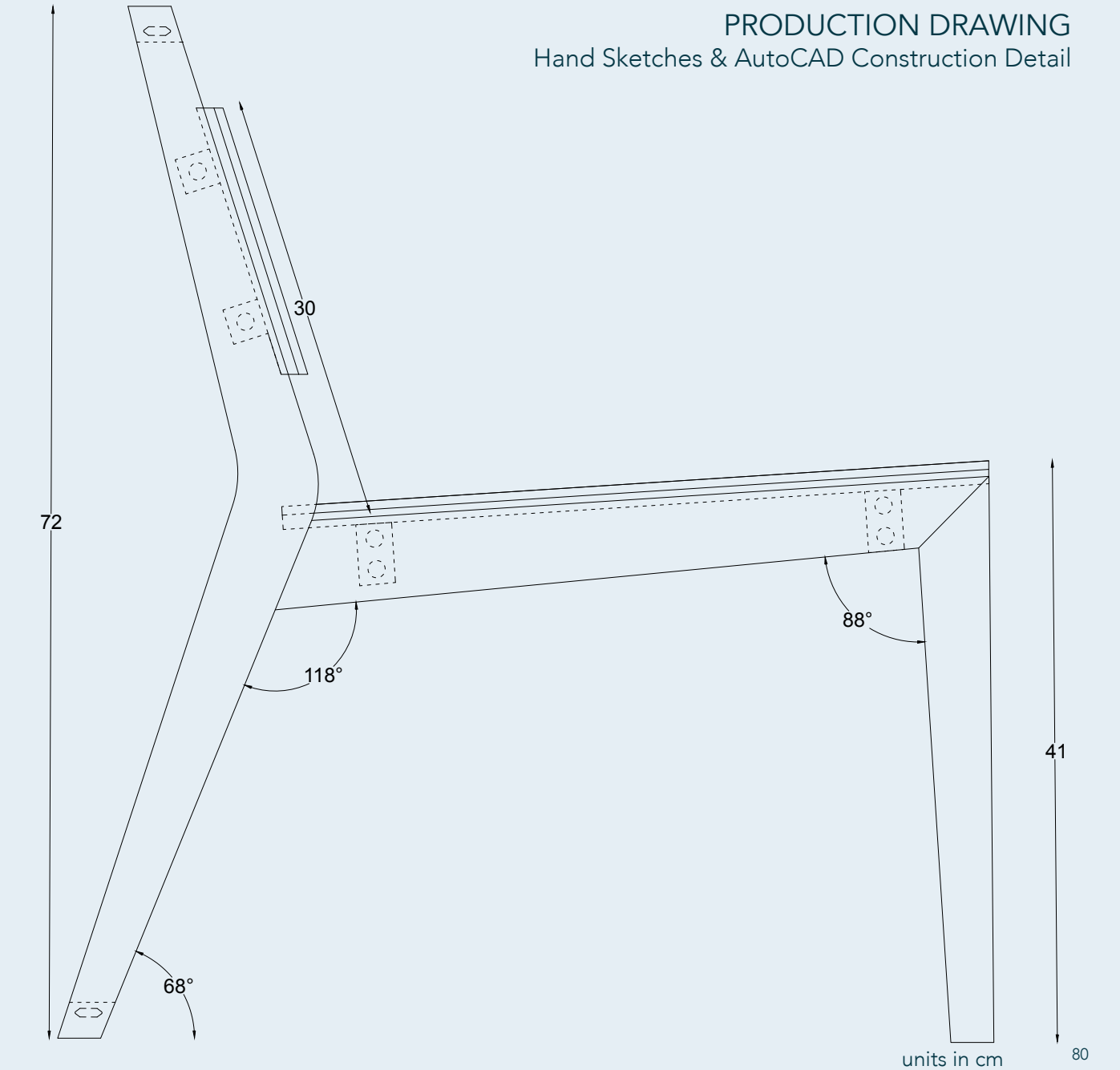
1/8 SCALE STUDY MODEL
ARNE JACOBSEN



PROCESS SKETCHES
Form Finding Analysis

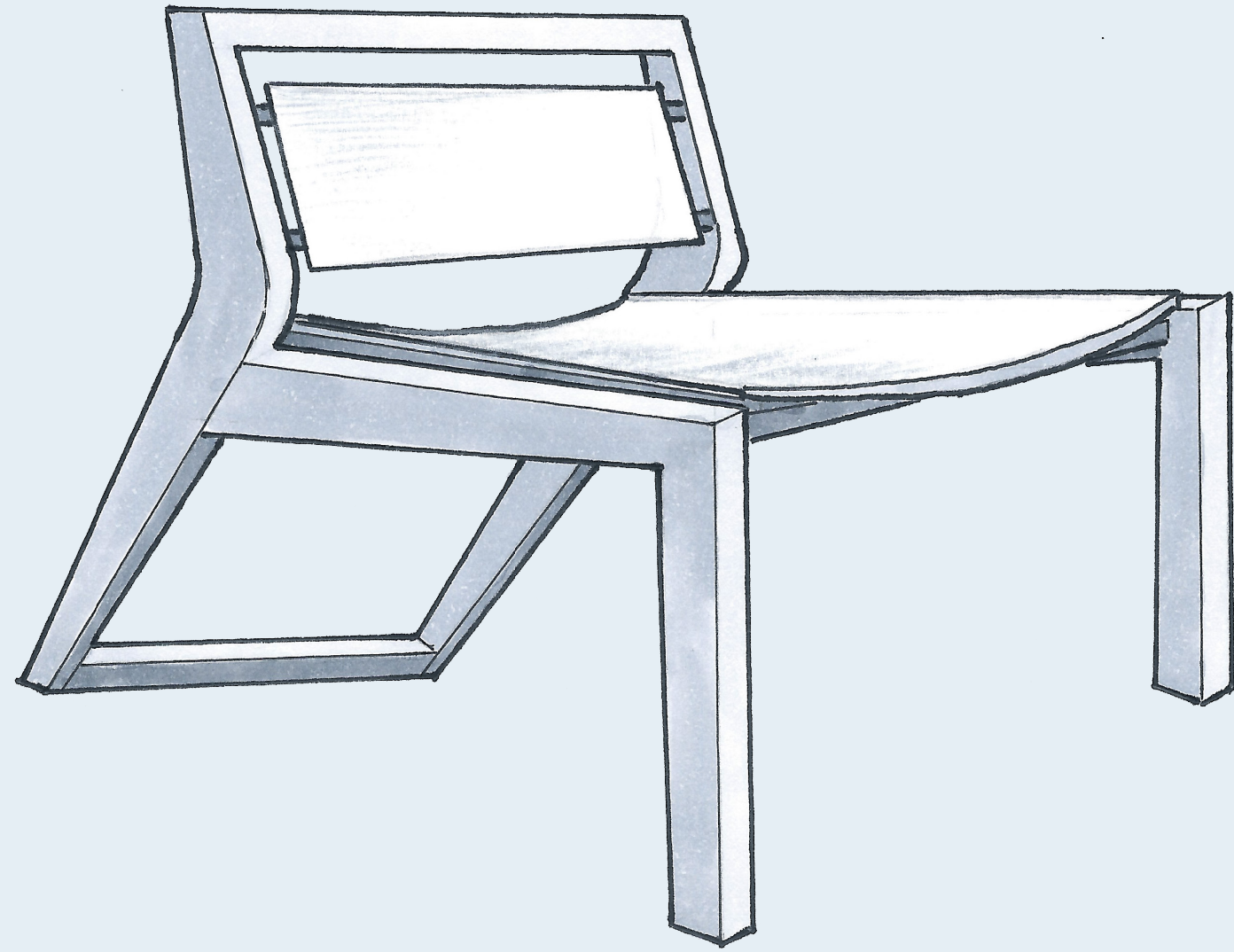


PRODUCTION DRAWING
Hand Sketches & AutoCAD Construction Detail



ARTISAN CRAFT
CHRISTIAN HINZE

DESIGN SKETCH
Vizualizing Final Design



INDRAMMET
Full Live-Size Chair





Christian Hinze Interior Designer



Christian is a graduate student in the Master of Fine Arts program for Interior Design at Pratt Institute, NYC.