

# Traditional Shop



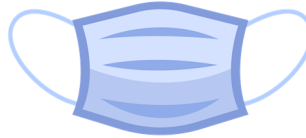
# Touchless Shop

- Merchandise is Shipped to the school
- Volunteers set up the shop in the school
- Students will walk through the shop, select gifts and make purchases.
- Dates: Most schools run 3-5 days during November or December.
- Free Supplies/ Bonuses
- Profit: 0%-30%
- Due to the unknowns there will be NO Cancellation Fee.
- Mask (for volunteers), Hand Sanitizer and Signs that say "Maintain 6 Feet" will be supplied.

## Suggestions:

- No more than 12-15 kids at a time in the store. (Depending on room size the numbers could change.)
- Schedule each classroom to come different times/days. (Schedule will be provided in your chairperson handbook.)
- Distance your tables to help with social distancing
- Only let students enter the store if they plan to purchase gifts.
- Follow your school district guidelines
- If you have students participating in virtual learning. Schedule them to come shop a certain day/time.

## Mask



## Hand Sanitizer



## Signs



- Merchandise is Shipped to the school
- Volunteers set up the shop in the school
- Students will walk through the shop, and enjoy a touchless preview of the gifts.
- Students pick out gifts and record selection on their gift envelope.
- Parents place their money in the gift envelope
- Volunteers collect the gift envelopes.
- Volunteers pack up individual orders and deliver to classrooms
- Dates: Most schools run 3-5 days during November or December.
- Free Supplies/Bonuses
- Profit: 0%-30%
- Due to the unknowns there will be NO Cancellation Fee.

• Mask (for volunteers), Hand Sanitizer and Signs that say "Maintain 6 Feet" will be supplied.

## Suggestions:

- Schedule each classroom to come different times/days for the walk through. (Schedule will be provided in your chairperson handbook.)
- Distance your tables to help with social distancing
- Follow your school district guidelines