

Student Council Adopts New Election Process

At two recent meetings Student council adopted amendments to reform its elections procedures and involve more students in student government and its functions.

Twelve positions were eliminated from the Council for next year and nominations were changed to an all petition method.

The reduction in membership was accomplished by removing Frosh-

more, AFS club, and Tower club representatives from Student council along with the **Tower Times** co-editor, and by changing the number of elected representatives of each class from six to four. This was done by eliminating the runner-up for class secretary from Council and by electing one less boy from each class. The purpose of the reduction is to make Student council a more

workable body and to allow more non-Council members to participate in its operations.

The Class Nominating Committees, composed of the officers and Council representatives of each class, and the Class Nominating Meetings were abolished. Previously they were responsible for making the majority of the nominations for student offices, with only incidental

nominations being made by petitions.

Beginning with this year's election, all nominations for student government positions, including class officers, Youth council representatives, and Student council officers and representatives will be made by petition.

The petition forms may be obtained from Mr. Studelska, in the Guidance Office, on Mon., Apr. 28 or Tues., Apr. 29, and must be returned to him by 4 p.m. Wed., May 7.

The petitions for Student council offices must have between 40 and 60 signatures obtained from freshmen, sophomores, and juniors. All other petitions need only be between 30 and 40 signatures but they must be by students in the same class as the candidate nominated. A person may sign only one petition for any one office. If he signs more than one petition for an office, both his signatures will be invalidated. Students may take out nomination papers for another student but the candidate's permission must be obtained before his name will be placed on the primary election ballot.

The Election Assembly, which features speeches by the candidates for Student council president will be held on Tues., May 13. This year, CONTINUED ON PAGE FOUR

Service Club Selects Junior As Member

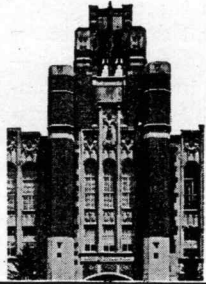
Each year an outstanding junior girl is selected for membership to Quota club, a national service organization for women. This year, Julie Ebert has been chosen for membership in this organization, and now becomes one of its 15,000 members.



Julie Ebert

Julie's many activities explain her invitation to membership in Quota club. An active member of AFS club, in which she serves on the executive board, Julie was chosen this year as a finalist in the American Field Service Program for Americans Abroad. Julie is currently Student council treasurer, co-chairman of Prom decorations, and a member of Tower club. Having worked on the **Tower** yearbook throughout high school, Julie is serving as associate editor for her junior year.

Tower Times



WHITEFISH BAY HIGH SCHOOL
Volume XXXIV, Number 14

MILWAUKEE, WISCONSIN
Friday, April 25, 1969

As "Knights of Nights" Approaches, Plans for Prom Near Completion

Preparations are currently in full swing for this year's junior prom "Knights of Nights," and all junior class members are urged to lend their assistance in order to complete them by May 10.

The prom is set for 8:30 to 11:30 with the Grand March at 9:15. Doors will be closed at 9:30, parents leaving then or shortly thereafter. The tickets for the dance will go on sale Mon., Apr. 28 for \$3.50. Following the dance, promgoers will proceed to the Jewish Center for the post-prom from 12:00 to 3:00. This is sponsored annually by the Whitefish Bay Women's club and tickets cost \$5.50.

King Fred Quilling and his Queen Pam Shepard will reign over the festivities with the chairmen of the various committees making up the rest of the court. They include: general chairmen Steve Scroggins and Mary Russler, decorations chairmen Katy Corcoran and Julie Ebert, publicity chairmen Bonnie Richards and Pam Shepard, Grand March chairmen Marcie Van Deman and Bob Berge, program and invitation chairman Candy Greening, tickets chairman Vicki Henderson, usher chairman Robby Weingarten, finance

chairman Tom Swientek, and special effects chairman Bob Brumbly.

In keeping with the theme of the Middle Ages, the gym will be decorated with murals of a peasant village, court gardens, enchanted forest, river, and knights jousting. In addition, a dragon's cave, magician's

hut, tents for jousting knights, wishing well, and a castle in the middle of the floor are under construction. Finally, the king's court will be a platform with two thrones behind which will be a half-moon shaped wall with overlooking balconies to the right and left of it.



Painting one of the many murals for prom at Lexi Bear's home are Vicki Vought, Kathy Saemann, Pat Wherry, and Lexi Bear.

School Reveals Poll Results

The following is a portion of the NCA poll of student opinion. All figures indicate percentage of total replies. Because figures have been "rounded off," the total does not necessarily equal 100%. 1,158 students replied when the questionnaire was given in December, 1968.

	Grades 9	10	11	12	Total
1. To what extent do you believe there is an emphasis on cultural events (concerts, drama, art displays, prominent speakers) in this school?					
1. Too much emphasis	—	—	2	2	1
2. About right	78	69	54	51	63
3. Too little emphasis	22	31	44	47	36
2. Do you feel students in your school have ample opportunity to participate in making changes in student government, activities, and student body procedures?					
1. Most students have ample opportunity	45	29	25	23	31
2. Students have little freedom to make changes because of faculty control	17	19	24	21	20
3. Student government and activities are run by a few of the most popular students	38	51	51	55	49
5. How valuable and useful do you consider your participation in student activities to be?					
1. Of little or no particular use or value	13	18	17	22	18
2. Perhaps of some value	40	42	47	38	42
3. Valuable and useful	36	32	30	29	32
4. Very valuable and useful	11	7	7	11	9
4. What is the average number of hours per week you spend on extracurricular activities?					
1. None	10	11	13	14	12
2. 1-4	43	39	25	33	37
3. 5-10	29	25	26	30	28
4. 11-20	16	21	19	18	19
5. Over 20	2	3	6	5	4
5. What is the average number of hours per week you spend in out-of-class study?					
1. None	1	2	1	2	2
2. 1-4	12	20	16	23	18
3. 5-10	39	38	39	42	40
4. 11-20	43	34	36	28	35
5. Over 20	5	6	6	6	6

Russler To Attend Badger Girls' State

Mary Russler, a junior, has been chosen to represent Whitefish Bay at Badger Girls' State in Madison the week after the close of school.

Here she learns practical and first-hand knowledge of the organization and functioning of state and local governments in Wisconsin. The recipient of this \$500 award should have an interest in our government, have outstanding leadership quality, show a sense of responsibility and participate in all-around school activities.

Mary Russler typifies many of the qualities desired of a Badger Girls' State representative. She led her freshmen class as their secretary, has served two years on Youth council and one year on Student council and is currently co-chairman of this year's prom, "The Nights of Knights."

Grub Dance Tonight

The second annual "Come as you Crave" dance will be held this evening starting at 8:30 in the Memorial Gym. There will be two bands, the fabulous Tomato Fish and the Agency who will provide continuous entertainment. The senior class is offering a prize to the student who has the most original costume. Gary Anderson, senior class president, said the dance promises to be the highlight of the 1968-69 school year and urged all to attend, stating that the money received from the dance will go towards a senior class gift. The tickets cost \$1.00 in advance or \$1.25 at the door.

Concert Band Earns Top Rating In 'A' Division at State Contest

Whitefish Bay high school's Band participated in the Wisconsin School Music Association contest for instrumental concert groups last Saturday, April 19, for the first time in 25 years. The Band entered in the class A division of the contest, which involved the most difficult symphonic band music, and received a "1" rating from each of three judges, thus resulting in a contest of class A-1.

The Band was judged superior in its tone, involving blend, beauty and clarity; its intonation, includ-

The band will present its second annual concert tomorrow night in the auditorium at 8 p.m. Tickets for \$1.00 will be on sale at the door.

ing attention to the melodic line; and ensemble and sectional balance, by all three of the judges. The Band performed three numbers in all: "Pentland Hills" by Jimmy Howe, "Symphonic Movement" by Vaclav Nelhybel, and "Elegy and Fanfare—March" by Roger Nixon.

When asked about the results of the contest, Band Director John Drewes replied, "This has been a tremendous success for us and the school. The judges' general consensus was that the band was one

of the best, if not the best, heard at the contest. This would rank us as one of the top bands in Wisconsin. This accomplishment is the first steppingstone to national musical recognition for Whitefish Bay."

Summer Courses To Include Musical

The production of the musical comedy "Camelot" may be part of the 1969 summer school program. Students taking a theater course, one of six new summer classes, would stage the play.

The other five new courses are Afro-American History; Art 12, a crafts course; Contemporary English Drama; Pre-geometry, a non-credit course; and Debate.

The class in Theater, to be taught by a team of three teachers, will meet three hours daily from June 23 to Aug. 1. One teacher will be responsible for costuming and props, another for acting, and a third for music.

C. Keith Smith, director of the summer school program, said a play has not been chosen yet, but that "Camelot" was under serious consideration.

He described the debate course as a speech course open to everyone. "It is not a training class for the debate team," he said.

Times' Table

- Sat., Apr. 26—
Band Concert, Auditorium, 8 p.m.
Track, Wagerin Invitational at Brookfield East, 8 p.m.
- Wed., Apr. 30—
Froshmore Installation, 3:20 p.m.
- Fri., May 2—
Drama Assembly, 12:30 p.m.
- Sat., May 3—
Track, Shorewood Relays at Shorewood.
College Board Exams.
- Mon., May 5—
Band Assembly, Faribault
High School Concert Band, Faribault, Minn.
- Tues., May 6—
JV Track vs. Nicolet, 4:15 p.m.
- Sat., May 10—
Junior Prom.
Track, Suburban Relays, at Waukesha.
- Tues., May 13—
Student Council Election Assembly, 12:30 p.m.
- Thurs., May 15—
Tosa East Band Assembly.
- Fri., May 16—
Water Ballet Show, 8 p.m.



Roger Ruggeri exhibits his skill on the string bass during the Lunch

Views From The Tower Lunch Bag Concert

We're pleased to be able to announce that the experiment known as the "Lunch Bag Concert" can be called a success. On Wednesday, April 16, the principal double bassist of the Milwaukee Symphony, Mr. Roger Ruggeri, opened this cultural series with a program of double bass solos, ranging from serious music to modern jazz. Lunch Bag Concerts will present both cultural events with guest artists and informative events with guest lecturers. Although future programs in this series will not be presented until next school year, we, as seniors, feel it is a step in the right direction for our school.

First of all, the attendance is not mandatory, as the programs are presented during the noon hour. At first, we were inclined to believe that this was a mistake, because the fine programs proposed would be missed by the student body as a whole. But we soon saw the reason for holding the programs for the interested students. In the past, we had seen various segments of the student body grow bored and become impolite audiences when something was not to their liking, and most often programs of cultural worth drew this sort of response. Thus, few were being scheduled until this year.

But now, with the "Lunch Bag Concerts" series, we hope to see an interest in cultural events increase. Not only will music concerts be given, but all phases of the fine arts will be presented, including drama and dance. The students who are already interested in the finer arts will attend the programs, and perhaps eventually this series will cultivate a taste for the arts in other students.

And yet, once again, this is just a step in the right direction. In a school which promotes such a large and healthy sports program for the good of the students, it is all the more important to emphasize cultural and informative events, which will probably benefit the students even more.

We feel the school should go about this in several ways. Exposure to cultural and informative events in the form of concerts, presented by both school and guest talent, and lectures, presented by both school and guest speakers, should be continued in the regular assembly program, along with the lunch bag presentations.

Perhaps the best way to promote these cultural and current events interests at the Bay would be to 'borrow' some of the school spirit that has been used so successfully in promoting athletics. If school spirit were involved in the school's own cultural and current events organizations and activities, including the band, the orchestra, the choir, dramatics, debate, and forensics, we'd see more interest in the fine arts and current events.

The relative lack of emphasis on the cultural and informative events in the past has bothered us. But as we graduate, it is reassuring to see a culture oriented program such as the "Lunch Bag Concerts" get off the

Student Tells of Trip to New York, Washington D.C.

By Dave Larsh

Flying high above the clouds, my only thoughts were "How bad does a smelly cheese sandwich taste at 7 o'clock in the morning?"

Yes, that's what we got for breakfast. To my dismay, it turned out to be just a foreshadowing of the quality food that we were to partake of during the remainder of the trip . . . (Yech!)

Along with what seemed like several thousand kids from other Milwaukee area schools, approximately 18 students from WFBHS were on their way to the east coast on a Standard Airways Jet. (Don't tell me you've never heard of Standard Airways!) Our point of arrival was originally D.C. Airport, but because of economic (?) reasons we landed in Baltimore.

Before I forget, I would like to commend our pilot for having enough guts to speak to us over the jet's P.A. system, with that rotten Texas accent of his. I even felt sorry for the poor guy! (Well, sort of.)

After a quick jog from the jet to our "chauffeur-driven" buses, we faced our first crisis. Bay View (Ah yes . . . Remember Bay View?) and Whitefish Bay rode the same bus . . . Anyway, some dink from the tour company placed the names "Bay View" and "Whitefish" on the identifying card at the front of the bus. Mr. Studelska, one of the two chaperones from WFB (his wife was the other), asked, "Is everyone from my group here?" As we enthusiastically replied, "Yes sir," (in unison, of course), some turkey from Bay View yelled, "Ya, the Whitefish are all back dere!" Unfortunately, the name stuck. We "Whitefish" were the brunt of many a snide remark that day . . .

Well, believe me, that's the closest I've ever come to being involved in mass hand-to-hand combat in my life (and for that matter, closest I hope to come). To think—a race riot in a bus! It boggles the mind! I didn't know we had so much school spirit!

(Can you imagine the headlines in *Variety* the next day?—44 STUDENTS SLAIN AT "FISH" FRY!)

Somehow, bloodshed was averted.

That same night is one that I would like to forget. Since there were only five boys from WFB, the hotel illegally squeezed us into one room. Yet, by 12 midnight there were still only two double beds with no cot to be seen. Idiot John Coerper volunteered to sleep on the luggage racks, and we all piled into our respective beds. Of course, the cot came at 1:15 . . .

By this time, John didn't feel like opening up the cot, so he got himself cozy on the

racks (again).

At 1:40 a.m. the phone started ringing, and no matter who answered it, the caller would immediately hang up. After five answerings with no response each time, it was my turn . . .

Now, I was becoming upset! "I know what will really shock them!" thought I.

The phone rang — "My big chance!" In a single two seconds (huh?) I picked up the phone and blurted out, "Ralph Roger's Rest Home — May I help you?"

It was Mrs. Studelska on the other end.

. . . How big was my head after that?

By 3 a.m., I had come to a conclusion—I was sick. Have you ever heard of a wonderful disease called "hives"? For the non-hospital crowd reading this, it is a flaring up of the skin all over the body (everywhere!) which causes the patient to itch fanatically. I was miserable . . . Can you imagine me sharing a bed with a guy like Steve Ruby, and trying to reach an itch on my big toe? It just can't be done without crossing the line we drew down the middle

Jim Hershoff Heads Underground Paper

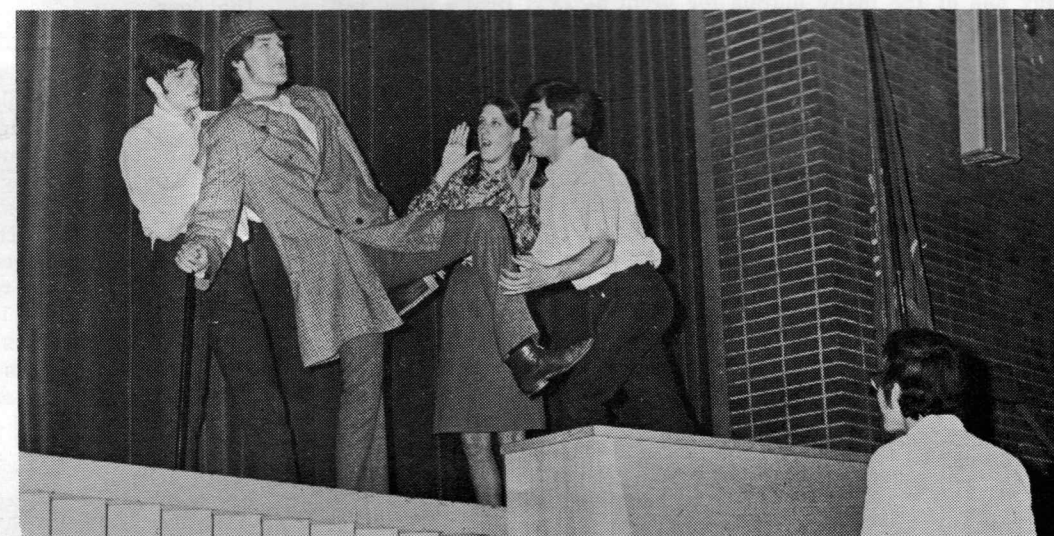
By Dan Glicklich

Recently, literary circles of the North Shore area have been startled by the advent of a new underground newspaper, called *Retrospect*. Edited by Jim Hershoff, who originally thought of the idea, and Clyde Adams, who became interested in the endeavor partly through a dissatisfaction with the *Tower Times* and eventually bought half of the company stock, *Retrospect* is a literary magazine, its purpose being to give students an opportunity to express themselves in prose, poetry and art, free of "censor from above."

However, the two editors stress that they will not tolerate salacity — in fact, one of the main objectives of the newspaper is to remain free of the obscenity and similar miscellaneous literary garbage that plagues most underground printings. Two issues have already been printed, and, so far, are a success. Part of this success is due to the fact that the newspaper receives city-wide contributions. Interest in the newspaper therefore is not limited to any one area.

With an initial circulation of 3,000, the newspaper serves the greater Milwaukee area, and can be purchased at Focal Point bookstore and most downtown bookstores, at the going rate of 20 cents per issue.

Sherlock Holmes To Be Performed Here



Action-packed "Sherlock Holmes" will be performed at a student assembly on May 2. It promises to be one of the first great STUDENT assemblies at the Bay.

"Support Your Local Sheriff" Is Shot Down by Reviewer

By Mark Pepler

The days of racing are over for James Garner, it seems. After an excellent dramatic role in *Grand Prix*, Garner has reverted to his *Maverick* days in the new movie release entitled *Support Your Local Sheriff*. The show is neither side-splitting nor exceedingly clever, and without the dignity that Mr. Garner demands of a part, the show would be a late show bomb. As it stands, it's destined for prime time with the remainder of Doris Day's "classic" pics.

Support Your Local Sheriff is an intentional farce on the old West. James Garner is an unintentional farce on Paul Newman, as he plays the stud hero who can do no wrong in the role of Jason McCullough. McCullough comes into town one day and witnesses nothing but violence. (It's a bad town.) He notices also that the town needs a sheriff, and applies for the job. Harry Morgan, TV co-star of *Dragnet*, is the town mayor, and does a fine job as the part of Olly Perkins. After showing his (unbelievable) shooting prowess, McCullough is hired by Perkins and his cohorts. Posthaste, the new sheriff dispatches a mob having a

Elam), and his shining career has begun.

Girls? Yes, but only one, really. Prudy Perkins, played by Joan Hackett, is the mayor's daughter who has eyes on Garner. He made it clear though, his only interest in the town was temporary employment, for his main desire was to head for gold and adventure in Australia. But we know better than that.

Yet all is not rosy for the new sheriff. In a corrupt town, there are corrupt people. The Danbys are the local bad guys in this instance. On the first day McCullough arrests young Joe Danby for murdering a man in a saloon. Pa Danby, none other than Walter Brennan, with his two other sons, come to free his youngest son, but are foiled by Garner's speed of wit and forethought. I can't tell you the end, for it's too exciting to spoil . . . zzzzzz. But seriously, it's the farce coming to the surface as McCullough cleans up the town, gets the girl and doesn't make it to Australia.

Support Your Local Sheriff is wholesome, quite funny in spots, and overall entertaining. Entertaining, you ask, without sex or perversion???? Yes, but beware: Chitty

of the bed . . . !

I finally fell asleep at 4:30 but soon was awakened by some strange squealing sound. To my pleasure, everyone else also awoke in bewilderment. After a few quick, but intelligent questions like, "What's the deal here?" we arrived at the core of the problem. It was Coerper constructing the cot in the close confines of our pitch-dark room! Every time he even touched the darned cot it would squeak.

The best surprise of all came when the hotel operator rang our room and sang us an encouraging, "It's 6:30 a.m. and you've all got a big, big day ahead of you!" It's a pity I can't write exactly what the reply was on

CONTINUED ON PAGE THREE

Letters to the Editor

Dear Editor-in-Chief,

The administrative policy formulated in the distant past that requires upperclassmen (grades 10-12) to attend school, whether in a solid or not, six and one half hours plus a lunch period every day is in these days unrealistic.

When the assistant principal is forced to call a special homeroom on 10 minutes notice to catch second semester seniors taking "unwarranted leave" to go some place to relax (because the "wreck center" is closed), then perhaps it is time to re-evaluate the situation.

If the student has a study hall first, fourth, fifth, or seventh hours, why not let him go his own way and enjoy another hour in bed, a longer unhurried lunch, or time to attend to personal business after school? Of course, the incoming freshmen and poor students (lower than a two point average) need this student study hall program, but the good student does not. Letting the responsible student out of his cage would simplify attendance keeping, enable the student to relax, and help students from "wandering the halls."

Your fellow seat warmer,
Richard Hermann

Dear Editors,

Being a member of the dynamic junior class at WFB, it behooves me to bring out into the open the injustice of the National Honor Society.

Now as I see it, the person selected by the teachers to this society are supposed to have leadership, character, have given service to their school and community and have, of course, scholarship. Everyone of those students measured up to the scholarship requirement but there is some doubt in my mind about the other qualities.

Now speaking exclusively about the junior faction which I'm more familiar with, I seriously doubt in my mind that at least three members deserve to be in it and I don't doubt that at least two others deserve to be in it that are not in at the present. I base this on the assumption of the general definitions of character, leadership and service.

All I ask is that you keep this letter in mind and review the people selected to this Honor Society and see if you don't truthfully come up with the same or similar conclusion that the election procedure be reviewed and students consulted about this method of evaluation.

—The Red-eye

Editor's Note:

The primary qualification for the society is, as you have stated, purely a grade-point cut-off. From that point, however, teachers, administrators, and a committee of both analyze the remaining three qualities. The whole process is done very carefully and as fairly as possible.

Dear Editors,

Under the shelter of a wealthy suburb and an excellent opportunity for further education and eventual success in life, it is very easy to forget about the outside world. Instead of remaining oblivious to current problems, Whitefish Bay H.S. student should express their growing concern through space provided in the *Tower Times*.

More and more self-expression has been published lately, but there is a great need for even more views written by a greater percentage of the students. Despite the tremendous necessity for such a response, apathy on the part of WFBayites is becoming increasingly evident at the release of every issue. It is high time we stop alienating ourselves from the world in which we live and begin to express ourselves through the facilities afforded us by this paper. After all, the *Tower Times* belongs to the students. Those who spend some of their time voicing their opinions in the paper are truly rendering a service to the school by helping to enlighten their fellow classmates on various issues.

The opportunity lies before us all in the pages of the *Tower Times*. Let's demonstrate that Whitefish Bay students do have the initiative to express honest concern over an ever-increasingly complicated world.

6. To what extent has the counseling and guidance you received in this high school been helpful to you?					
1. Extremely helpful	17	13	12	31	18
2. Some help	57	57	59	52	56
3. Very little help	16	21	18	11	17
4. Not helpful at all	9	7	8	4	7
5. Haven't received any in this school	2	2	3	2	2
7. To what extent are teachers available and willing to give you outside help on your studies?					
1. Seldom or never	1	2	2	3	2
2. Occasionally	9	9	12	14	11
3. Usually when needed	47	49	52	49	49
4. Whenever it is needed	43	40	35	33	38
8. How would you describe the standards (expectations) set by your teachers?					
1. Much too difficult	3	2	4	4	3
2. Somewhat difficult	43	46	51	48	47
3. About right	51	47	39	38	44
4. Somewhat easy	3	3	3	6	4
5. Much too easy	—	—	—	1	1

9. In general, to what extent do the subjects you are now taking seem meaningful for your future interests and needs?					
1. Considerably	35	29	30	39	33
2. Somewhat	54	52	49	41	49
3. Most seem unrelated	10	19	20	20	17
10. If you could be most remembered here at school for any one of three things below, which one would you want it to be?					
1. Leader in activities	43	40	42	34	40
2. Most brilliant — best student	17	14	20	19	17
3. Most popular with others	36	42	35	38	38
11. How would you rate the educational opportunities offered by your high school in regard to preparation for college (or for a job if you are non-college bound)?					
1. Very inferior	—	3	1	5	2
2. Inferior	1	4	2	2	3
3. Average	10	14	10	8	11
4. Good	29	21	26	28	26
5. Very good	58	58	58	57	58
12. What is your reaction to the criticism sometimes made of high school that too much emphasis is placed on grades (marks)?					
1. Strongly agree	24	34	40	44	36
2. Tend to agree	47	40	41	38	41
3. Tend to disagree	22	20	15	13	18
4. Strongly disagree	5	5	3	4	4
13. To what extent are students given freedom and unscheduled time in which they are able to decide from a variety of learning opportunities (using the library, labs, seeing teachers, etc.)?					
1. There is too much freedom and laxity	—	1	1	3	1
2. About right amount is provided	80	67	63	54	66
3. There is little freedom, much regimentation	19	31	35	42	31
14. Does your school offer all the subjects you would like to take in high school?					
1. Yes	76	68	51	48	61
2. No	22	31	47	50	37

PTA Offers Two Scholarships

This spring, as for the past 14 years, the combined PTA's of the four elementary Whitefish Bay Schools are offering scholarships to Whitefish Bay High School seniors, intending to major in the field of education.

This year because of funds available and the increasing "teacher need," the committee is offering two scholarships of \$625 each, payment to be made in four installments, over the four-year college period.

Any Whitefish Bay High School senior, boy or girl, with good scholastic achievement, and an earnest desire to pursue a career in education, in an accredited teacher training course, may apply. The scholarship may be used in any accredited college, of the student's choosing, offering such courses.

Application forms give the student an opportunity to state his chosen field, and his reasons for entering the teaching profession. These forms will be available in the high school office on Monday, April 29, and the deadline for their return will be Monday, May 5.

Announcement of the recipients

ATTEND THE BAND CONCERT TOMORROW NIGHT 8 P.M., AUDITORIUM

Council Elections...

CONTINUED FROM PAGE ONE

however, there will be an additional opportunity for the student body to meet their candidates. Individual forums will be held for each class in the week after the assembly but before Primary Elections. At these forums candidates for class offices and Student and Youth council posts will be able to express their views to their classmates and at the same time be exposed to the opinions of these classmates.

Student council president John Franke said he hoped that all these measures would increase student body interest and participation in their elections. He thought that a smaller Student council would improve student participation in the projects of Council because Student council will no longer be able to be a self-contained entity, manning all its committees only with its own members. He also expressed the desire that all interested students take out petitions, either for themselves or a worthy classmate and emphasized that petitions must be taken out on either Mon., Apr. 28 or Tue., Apr. 29.

Appointments—EDgewood 2-9923
JAMES HINTZ Barber Shop
4425 N. Oakland — Shorewood

HUNTRESS - WORTH MLS Realtors
501 E. Silver Spring Dr. Milwaukee, Wis. 53217

will be made at the annual Honors Assembly on June 4.

Valerie Jablounka, the former Valerie Hammond, was the 1964 winner of the award, and is now teaching first grade at Henry Clay School. The members of this year's committee are — Mrs. A. Swientek, Richards; Mrs. J. Fairweather, Lydell; Mrs. P. McBride, Cumberland; and Mrs. M. Jansen, Henry Clay.

FTA Has Convention

Five members of Whitefish Bay High School's FTA (Future Teachers of America) club attended the state FTA convention in Ripon last Saturday. Attending were Sue Merg, president; Lucy Gemlo, vice-president; Mary Russler, second vice-president; Bridget Collins, treasurer; and Janis Schlessinger. The club's secretary, Joan Chipley, was unable to attend.

The convention itself was divided into three sections. First, a campaign and election were held with offices such as state president, state vice-president, and state historian being filled. Then, a speaker presented the next section. After lunch, workshops, the final section, were held on various subjects such as AFS students talking about the teaching of their language, or a qualified person speaking on the tutoring of the deaf or blind.

FTA club's activities this year included the Teacher's Tea in November and a student-teacher discussion in January. During February, the head of the Pleasantview school for the trainable retarded showed slides and gave a talk about the methods of teaching employed. Later, students visited the school, and were allowed to watch classes and talk with children and teachers.

For the future, the club plans on having a picnic at the end of exam week in June.

College Bound

- Drake University; Des Moines, Iowa—**Richard Hermann**
- Lawrence University; Appleton, Wisconsin—**Todd Thurwachter**
- Miami University; Oxford, Ohio—**Julie Boehm**
- Rensselaer Polytechnic Institute; Troy, New York—**Carol Sterh**
- University of Bridgeport; Bridgeport, Connecticut—**Susan Salzman**
- University of Denver; Denver, Colorado—**Tom Wakefield**
- University of Mississippi; University, Mississippi—**Lawrence Barr, Mark Leedom**
- University of Montana; Missoula, Montana—**Mark Pepler**
- University of Wisconsin; Madison, Wisconsin—**Julie Dorfman**
- University of Wisconsin; Madison, Wisconsin—**Daniel Rumelt**
- Wesleyan University; Middleton, Connecticut—**John Franke**
- Wisconsin State University; Eau Claire, Wisconsin—**John Coerper, Tom Karow**

Betsy Blaney Wins Scholarship

This year a committee composed of members from the Whitefish Bay Women's club chose Betsy Blaney as the recipient of the \$500 Women's club scholarship.

Any senior girl with a B or better grade point average may submit an application, on which she must indicate her college plans, any honors she has received, activities in which she has taken part, and what she hopes to gain from the scholarship.

Betsy has an impressive record, community. She worked as a candy striper at a local hospital, held a job at the Humane Society, and dur-



Betsy Blaney

ing the school year is a member of AFS club, Hostess club, and the Tower business staff, and was previously the treasurer of Froshmore.

Students Travel

The Business Education department is planning a field trip for Tue., Apr. 29. The Senior Stenography and Office Practice classes will participate. The group, along with department head Miss Swarouth, will visit the First Wisconsin National Bank and the Northwestern Mutual Life Insurance Company.

On Monday, March 31, the Art department had its field trip. Students from Mr. Kops' Senior Art classes traveled to the Memorial Art Center. The exhibition they viewed consisted mainly of sculpture, with some period dresses, jewelry, and furniture. Particularly worthy of note were the exhibits using special lighting effects.

The students filled two buses. Leaving second hour and returning at lunch, the students were accompanied by Mr. Kops and Mr. Rioboldt.

The Shore Pharmacy
The Shore Camera Shop
2127 E. Capitol Dr. WO. 4-3990

Craigs BAY SHORE
WOMEN'S APPAREL
5838 N. Port Washington Road
Phone 962-5606

CLIP THIS COUPON FOR A
10c
DISCOUNT ON
ANY 45 R.P.M. RECORD
Limit 1 Coupon per Record
BAY MUSIC CENTER
318 E. Silver Spring Dr.
Whitefish Bay 332-7020

Tommy Stevens: 'Q' and 'A' Session

At 3:30 on Tue., Apr. 29 in the cafeteria, Mr. Tommy Stevens, a student from Sierra Leone, will speak on "America: as an African sees it" and follow that with a question and answer period.

Mr. Stevens did his undergraduate studies at Miami University in Ohio and his graduate work at Howard University in Washington, D.C. with history as his major. He is now in his pre-med studies at UWM and a close friend of Mr. Busalacchi.

Sierra Leone is a country located on the west coasts of Africa next to Liberia.

This program is sponsored by the Whitefish Bay High School Assembly Program Committee. It is another attempt to give students a variety of programs at different times in the day. The Lunch Bag Concert, another program sponsored by this committee, was such a success that more are planned for next year.

Riegelman's Downer Pharmacy
3116 N. DOWNER — WE DELIVER
PHONE — 964-0600

Dan Fitzgerald Pharmacy Inc.
424 E. Silver Spring 332-8381

HECKER'S Shoes
"Proper Fit Makes All The Difference"
304 E. SILVER SPRING DR. • WHITEFISH BAY, WIS. 53217
PHONE 332-5200 or 332-1430

Construction Begins On New Village Hall



Mr. Henry Mixter, Whitefish Bay Village President.

The informal groundbreaking ceremonies for the new Whitefish Bay village hall were held on Mon., Apr. 14 on the Marlborough Mall. All contracts for the \$600,000 municipal building have been signed, and it is anticipated that construction will require one year.

The site of the new village hall is diagonally across the street from the present structure at 801 East Lexington Boulevard. The Federal government is expected to contribute \$26,242 of the total \$600,000 because of the inclusion of certain civil defense installations in the building. \$30,000 and \$45,000 from the sale of the three lots on which the present hall is situated.

T.C. Holds Party

Tower club welcomed back some of last year's senior girls at its annual Coketail Party on Wed., Apr. 2. After refreshments were served the girls heard short speeches on college life given by four of the ex-Bayites.

The speakers, Martha Swanson from Smith College, Myra Weinberg from Pine Manor Junior College, Debbie Hagman from St. Olaf College, and Carol Ottenstein from the University of Wisconsin-Madison presented many different impressions because of the diversity of the colleges. This year's Tower club members were then given a chance to ask questions.

Because of our Christmas vacation dates, which were not the same as most colleges, the Coketail party was postponed to this later time. Although Tower club regretted that more alumnae were not able to be present, again because of vacation schedules, the smaller group allowed a more informal discussion. The junior and senior girls profited from the experience of talking to girls already in college.

Mr. Roberts
BAY SHORE — MAYFAIR
Misses and Junior Apparel



Bob Mann exhibits his powerful swing that led the golfers to victory over Shorewood, Apr. 23. Mann, Steve Johnson, Tom Mullaney were medalists in the meet.

Bay's Glorious Sports History Reviewed

Through the years, Whitefish Bay high school has had some fantastic moments in sports. In a comprehensive report only the **Tower Times** could bring you, here is a nostalgic look to some exciting sports moments in WFB sports history, circa 1936-45.

Nov. 18, 1939—"We will have a taller team than last year," said Mr. Kuehl, head basketball coach, "but I don't know if they'll be any better." The nucleus of the team should be Bill Sigler, Jim Butler and Baubles Ettenheim.

ence volleyball race, lettermen in track and volleyball will receive gold track shoes and gold volleyballs.

Nov. 22, 1944—Blue Duke Sportlight—Dave Schirle has been working hard on silver studded brownies which shall be issued to all members of the teams and the coaches.

Feb. 10, 1939—"A greatly improved Whitefish Bay quintet edged out Cudahy in a closely fought ball game last Saturday night, 17-14.

Cross country season is over now and a party is being held tonight after the basketball game. Happy Thanksgiving and don't forget the turkey. Stuff it.

Oct. 14, 1943—In recognition of an undefeated track season and a first place in the Suburban Confer-

Nov. 10, 1934—"Not satisfied with the mild games of the new season, the GAA girls have added a new game called tag football. The art of tag-football was demonstrated to the girls by Melville Tinkham. They played their first game on Nov. 3 and lost 18-0. The game was followed with hot chocolate and doughnuts.

Feb. 7, 1936 — West Milwaukee, led by hot shooting Al Dobretsberger defeated Whitefish Bay, 27-18 in a basketball game.

Jan. 30, 1936—There is beginning to be a hope that our school will be able to boast a polo team in the future. Jeanette Berssenbrugge is expected to lead the polo team.

Herb Smith
SUBURBAN SHOP
DISTINCTIVE
in Bay Shore

Capper-Wendland
Pharmacists
BERKELEY BUILDING
411 E. Silver Spring 964-3838

Sports

in FORMATION

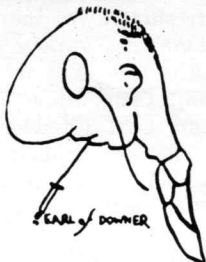
By Rick Rael

The poll in the **Tower Times** indicates a small percentage of the students questioned believe there is too much of an emphasis on athletics in this high school. These students will probably use the new addition to support their belief. It is a fact that a new fieldhouse and a new swimming pool make up most of the new structure. Now this school has two operable pools and two gym facilities. What also leads students to believe there is too much an emphasis?

When you think about it, student interest puts the emphasis on any one activity. What is important at one school may be meaningless at another. No one is forced to go to a football or basketball game anymore than they are forced to attend a band concert or class play. Student interest dictates the popularity of each. This school is fortunate to have students who support almost all school functions. Naturally athletics plays an important role as a school function. But it does not and should not overshadow other activities. Whitefish Bay has no more an emphasis on athletics than any other school and no more an emphasis than it deserves, and that's what the poll showed.

2629 N. Downer Ave.

- Tree Shop
- Electrical Supplies
- Garden Shop
- Housewares
- Tools
- Car Needs
- Paint



Downer Hardware
PHONE 332-2820

Announcing . . .
The Store You've Been Waiting For!
MR. JAX

Color Co-ordinated . . .
Jackets—Slacks—Shirts—Socks

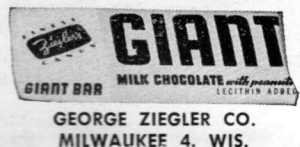
Special Feature . . .
DEWAN RACING JACKETS
SPORTS APPAREL
MR. JAX

506 W. NATIONAL MILWAUKEE PHONE 384-1140

Whitefish Bay Bank & Trust Co.

- FREE PERSONAL CHECKING ACCOUNTS
 - 4% DAILY INTEREST ON SAVINGS
- 177 E. Silver Spring Dr. Phone 332-7147
Member FDIC

Outlines, Paperbacks, Texts,
Art Supplies, Notebooks, etc. at
Green's Campus Book Store
3132 N. Downer Phone 962-7880
Across from UWM



BOB SACKS CAMERAS

PHOTO SPECIALS

perfect for
Job Application
College Application
Gifts Swapping

20
Black and White
Photos This Size
\$2.00

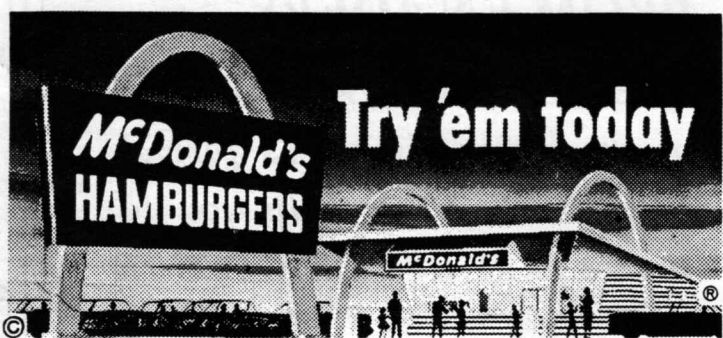
From Any Black or White or
Color Snapshot, Portrait or
Class Photo or Drawing.
our special
Bob Sacks Cameras
Bay Shore Shopping Center
332-8211

RICHARD EAGAN

FOX'S FLOWERS

5629 N. LAKE DRIVE

CALL 962-4434



look for the golden arches . . . **McDonald's®**

5344 North Port Washington Road

"Your Kind of Place"

Impressive fashions
in famous name
formal wear from



S-H-O-R-E-W-O-O-D

For your next formal affair,
visit the men's shop that prides
itself in personal attention to
fashion and fit. We'll outfit you
from tie to toe . . . totally
coordinated for maximum
appearance, and bearing the
distinguished label

After Six
BY RUDOFKER

Special Student Rates

4009 N. Oakland Avenue
Open Mon & Fri til Nine
Ample free parking. Tel: 332-3404
Charge accounts invited



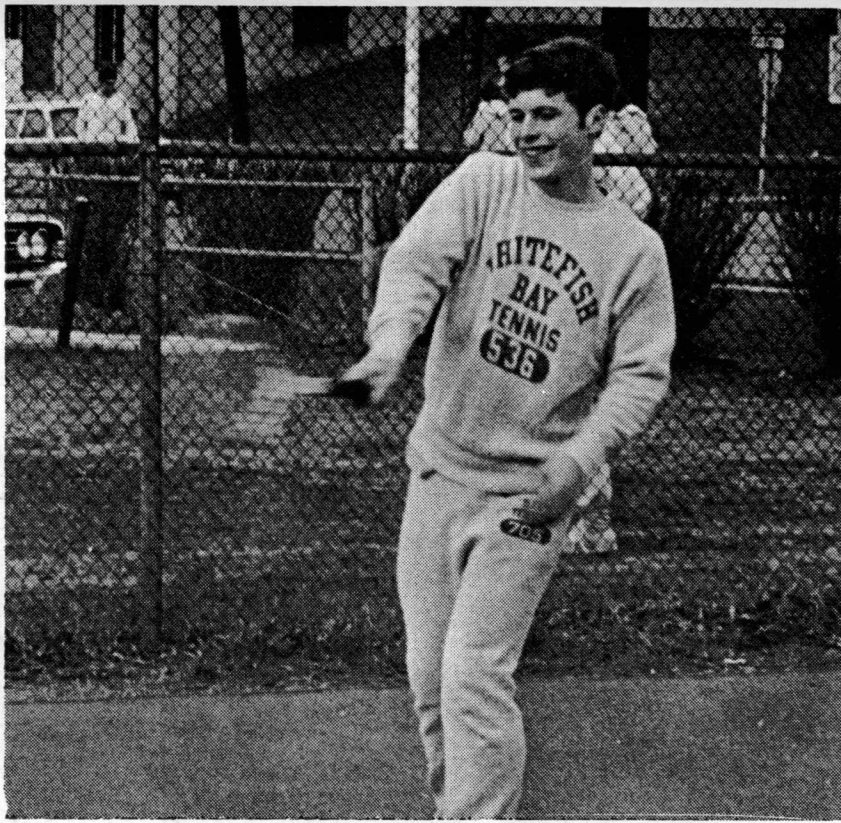
Faculty, Wally Lead

Many surprises have come about in the intramurals. The faculty have won all nine of their games. Wally's have slowed down from their beginning pace and are now 3-4. Rice's team are now only a game back with an 8-1 mark.

The Co-Ed league has started now. Wally's are now on top, along with Beaver's Cleavers. Each team now has a record of 2-1. Wally's, led by Dave Kozak and Cindy McBain, crushed the Sauer-Krauts. Beav's led by Kathy "Buts" Butler, and Mary Heine's timely serves and sets beat the Wax Museum, featuring Chipper T. and the notorious Blaney sisters.

Standings for both Boys' and Co-Ed Leagues are:

BOYS		CO-ED	
Faculty	9-0	Wally's Boys	2-1
Rice	8-1	Girls	2-1
Team 11	4-1	Beavers Cleavers	2-1
Wally's	3-4	Faculty	0-0
S.W. Appleby	4-5	Wax Museum	1-2
Team 5	4-6	Saur-Kraut	1-2
Bay Area	3-6		
Cr. Pine	0-9		



Larry Barr, first singles player, shows his stroke in afternoon practice.

Bay Places 3rd in Own Invt.

On Apr. 18, the Bay turned in several outstanding performances as they hosted five teams in the first annual WFB Invitational Indoor track meet. Nicolet scored 63 points to take first, Wausau second with 39½, Bay grabbed third with 37½, Custer, Oshkosh, and Monona Grove followed. The Bay depth was very evident in both hurdles. In the "highs," Jerry Block took second, Brian Anderson took third, and Paul Shedivy was fifth. The "lows" finished with Shedivy second, Block third, and Russ Trimble fifth. Also fifth was Mike Galvin in the mile. The 440 was another event in which the Bay placed. Jim Just ran well enough to take a fourth. The six lap relay looked like another spot for the Blue Dukes to pick up points. That was until the first baton pass. Todd Weir made Mr. Zamzow and Mr. Norris very happy as he finished second to a man who ran a 2:00.3 in the 880. The Bay also took second in the mile relay. Steve

Lange and John Perdue did well in the high jump. Steve received third while "Due" got a fifth. Andy Vandend Avond put 50 ft. 1½ in. to win second. Russ Trimble also performed creditably to take third in the pole vault.

Since not much is written about Frosh-Soph, there will be an article an issue about the younger trackmen. The first such article features Tom Lyons. Tom is a miler and has been timed in 5:08.3. Watch out for him, he'll be another Mr. Norris. Don Wiggins, a soph, runs the 440 and has been clocked in 57.9. middle name is Courage. REMEMBER May 3. The day the Blue Dukes win the Shorewood Relays.

GOLLER-STEIN
MEN'S and BOYS' WEAR
Bay Shore
Phone 332-8273

BENZ SPORT AND CYCLE

412 E. SILVER SPRING

Phone 962-0911

Sporting Goods

Hobby Supplies

Schwinn Bicycles

North Shore Stationers

Office and School Supplies
2211 E. Capitol Dr. WO. 4-4772

Focal Point Bookstore

Thousands of paperbacks and hard cover books for every reading taste.

Cliff notes and Study Master notes for better grades.

ALSO POSTERS AND JEWELRY

Open Monday through Saturday — 9 a.m. to 10 p.m.

404 E. SILVER SPRING DRIVE

BAY SHOE SERVICE

962-8003

QUALITY SERVICE
MILWAUKEE
SPORTING GOODS CO.

842 North Third Street
271-1566 — Milwaukee, Wis. 53203

Portrait Photographs Competitively Priced THE PLATZ STUDIOS

328 East Silver Spring Drive

WO. 4-1400

SCHWANKE • KASTEN CO.
JEWELERS
324 EAST SILVER SPRING DRIVE

Zien Plumbing & Heating Co.

4450 N. Oakland Ave.
WO. 4-4110

Creative Portraits

by LEWIS ABRAMS
Photographer

5167 N. Elkhart 962-0800

KEEP YOUR COOL
with
Buttons, Patterns
and Yarns
from
Ruhama's
YARN and FABRICS
420 E. Silver Spring Dr.
Whitefish Bay

Kemp's Rexall Drug Store

Kensington and Oakland
WO. 2-8150-8151, Shorewood



PROM-ENADERS . . .
Sherkow has over 20,000 of the latest in men's formal wear in stock to help you to make that Big Impression

including double breasted in white, blue, maize and black, silks, paisleys, pastels, whites, seersucker stripes and the latest in vests. Order your favorite now and be sure.

SPECIAL STUDENT DISCOUNT



MEN'S FORMAL WEAR

DOWNTOWN	612 W. Wisconsin Av.	276-9191
EAST	433 W. Silver Spring	964-9300
WEST	9915 W. Lisbon Av.	461-5611
SOUTH	1212 W. Mitchell St.	645-8500
FAR SOUTH	4340 S. 27th St.	281-4190