

COVID-19 Procedures For Drop-off & Pick-up

Moving Forward Together



thegivingtree
development center

1

Stay home.

Fever of 100.4 F or higher, now or in the preceding 72 hours

- Cough
- Sore Throat
- Muscle Aches
- Difficulty Breathing



2

Staggered Arrival & Drop Off Times

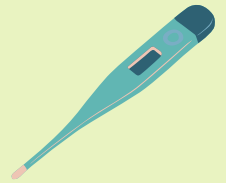
- Staggered arrival and drop off times will be assigned to limit direct contact with other parents.
- The same parent or designated person should drop off and pick up the child every day, if possible.
- Nonstaff members will be allowed beyond the reserved checkin area.



4

Health Screenings

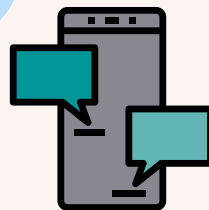
- Staff will conduct a daily health check-in with each child and employee upon arrival.
- A temperature check will be taken prior to any child or staff entering the facility with a non-contact thermometer.
- A visual inspection will be conducted of your child(ren) for signs of illness.
- If any child is sick that child will not be able to enter the facility and must follow the CDC recommendations.



3

Text or Call Ahead

- Call or text to let us know you have arrived to drop off your child.
- Please stay in your car until a staff member confirms that your child can come in for check-in.



5

Staff PPE & Safety

- Staff will reinforce hand washing throughout the day and wear cloth face coverings.
- Staff will sign daily agreements of CDC guidelines and recommendations.
- Staff will routinely clean, sanitize, and disinfect surfaces and objects that are frequently touched.
- Air purifiers with a UVC sterilizer will be used to help ventilate and increase the circulation of clean air.



Entering the Facility

- When your child enters the facility they will take off their coats, jacket, and shoes.
- Each child will be given a pair of non-slip socks.
- Each child will wash their hands with soap and water for at least 20 seconds immediately entering the facility.
- Nonstaff will not be allowed to enter the facility only in designated check-in areas to decrease interaction with staff & children.

